



The Department of Information and Technology Services
Research and Statistics
1001 Vandalay Drive
Frankfort, KY 40601
(502) 573-2350

PRETRIAL INTERVIEWS WITH DEFENDANTS IN CUSTODY 1/17/2022

NUMBER OF INTERVIEWS AND DAYS IN CUSTODY

January 18, 2022

Statistics Request Overall Description

On January 12, 2022, the Department of Corrections requested a report of the number of interviews and time in custody for those defendants in custody on a single day.

PRIM, the information system used by Pretrial Services, was queried for interviews in which a defendant was in custody as of an automated compilation performed in the early morning of January 18, 2022.

Statistical Report (22_PINS8002)

The report contains two pages. The first page presents the number of interviews with defendants in custody and the second page presents data about the time these defendants have so far spent in custody.

Each page consists of a bar chart visualization and a cross tabulation. All data presented is grouped by the Jurisdiction and highest penalty level and class within any cases related to a given pretrial interview in the specified jurisdiction.

On the first page, the bar chart distinguishes by color between those interviews in which there is an active custody holder and those for which there is not. The table at the bottom provides separate counts for those interviews by the reason for the current custody holder and for those interviews without an active custody holder.

On the second page, the bar chart presents the 25th Percentile, 50th Percentile (median), 75th Percentile, and 95th Percentile of the days spent in custody by defendants of the indicated Jurisdiction & highest level / class. The same data is also presented in the cross-tabulation.

Statistical Analysis Considerations:

- The statistics presented in the attached tables are a snapshot in time as of the date the data was queried: 1/18/2022.
- Each interview may involve one or more cases.
- Counts of interviews count each interview only once. A single interview may have separate Release Decisions and Outcomes in Circuit and District Court. The same interview may appear in more than one subtotal within a table but will never be counted more than once in any cell, subtotal, or grand total.

PRETRIAL INTERVIEWS WITH DEFENDANTS IN CUSTODY 1/17/2022

NUMBER OF INTERVIEWS AND DAYS IN CUSTODY

Statistical Report (22_PINS8002)

- Time in custody is evaluated separately for interviews that have custody for both District and Circuit cases.

Data Variables Requested

Database	Data Variable	Description
	Jurisdiction/Level	<p>Indicates the Jurisdiction and the most serious charge of any case applicable to the pretrial interview. Interviews in which a defendant was in custody for both Circuit and District cases are counted and have time in custody reported separately for each jurisdiction.</p> <ul style="list-style-type: none">• Circuit Criminal – all interviews and custody related to Circuit Criminal cases.• District Felony – interviews and custody related to District Criminal cases in which at least one case related to the interview includes a felony level charge.• District Misdemeanor – interviews and custody related to District Criminal cases in which at least one case related to the interview includes a misdemeanor level charge and no cases include felony charges.• District Violation – interviews and custody related to District Criminal cases in which at least one case related to the interview includes a violation level charge and no cases include felony or misdemeanor charges.• District Other – interviews and custody related to District Criminal cases containing no felony, misdemeanor, or violation level charges. These cases typically relate to post-disposition charges such as probation violations, violations of release conditions, contempt, etc.
	Penalty Class	<p>The class of the charge with the most serious penalty level and class within any case related from the indicated jurisdiction related to an interview.</p> <ul style="list-style-type: none">• Class A Felony: 20 years or greater. All capital offenses are also Class A Felonies.• Class B Felony: Ten years or greater and less than 20 years.• Class C Felony: Five years or greater and less than ten years.• Class D Felony: One year or greater and less than five years.

PRETRIAL INTERVIEWS WITH DEFENDANTS IN CUSTODY 1/17/2022

NUMBER OF INTERVIEWS AND DAYS IN CUSTODY

Data Variables Requested		
		<ul style="list-style-type: none"> • Class A Misdemeanor: 90 Days or greater and less than one year. • Class B Misdemeanor: Less than 90 days.
	Holder Reason	<p>The factor other than judicial decision, if any, that holds a defendant in pretrial custody for a given interview. If a defendant is held by multiple factors, the most serious reason is reported per the hierarchy below:</p> <ul style="list-style-type: none"> • Federal Inmate • State Inmate • Parole • Probation • County Inmate • Contempt • Non-Payment of Fines / Restitution • Other
	Interviews	<p>The number of distinct pretrial interviews. The pretrial interview is the central data unit used in PRIM, capturing any data related to a discrete period of pretrial custody for a single defendant, which may apply to one or more cases. A single defendant may have multiple pretrial interviews during any given period of time. Release outcomes and measurements of time in custody are captured separately for each jurisdiction (Circuit and District Court) for any interview including at least one case from each jurisdiction.</p>
	Days in Custody	<p>The number of days in custody is calculated for each interview as the difference in days between the earliest booking date for any case related to the interview and the date of the query. The following metrics of Days in Custody are reported:</p> <ul style="list-style-type: none"> • 25th Percentile: For a reported group, one quarter of the reported interviews have spent this number of days in custody or less and three quarters have spent this number of days in custody or more. Also known as first quartile. • 50th Percentile (Median): For a reported group, half of the reported interviews have spent this number of days in custody or less and half have spent this number of days in custody or more. • 75th Percentile: For a reported group, three quarters of the reported interviews have spent this number of days in custody or less and one quarter have spent this number of days in custody or more. Also known as third quartile.

PRETRIAL INTERVIEWS WITH DEFENDANTS IN CUSTODY 1/17/2022

NUMBER OF INTERVIEWS AND DAYS IN CUSTODY

Data Variables Requested

		<ul style="list-style-type: none">• 95th Percentile: For a reported group, 95% of the reported interviews have spent this number of days in custody or less and 5% have spent this number of days in custody or more.
--	--	---

Disclaimer Associated with KCOJ/AOC Database(s) and Element(s)

RESEARCH AND STATISTICS DISCLAIMER for PRETRIAL SERVICES REQUESTS

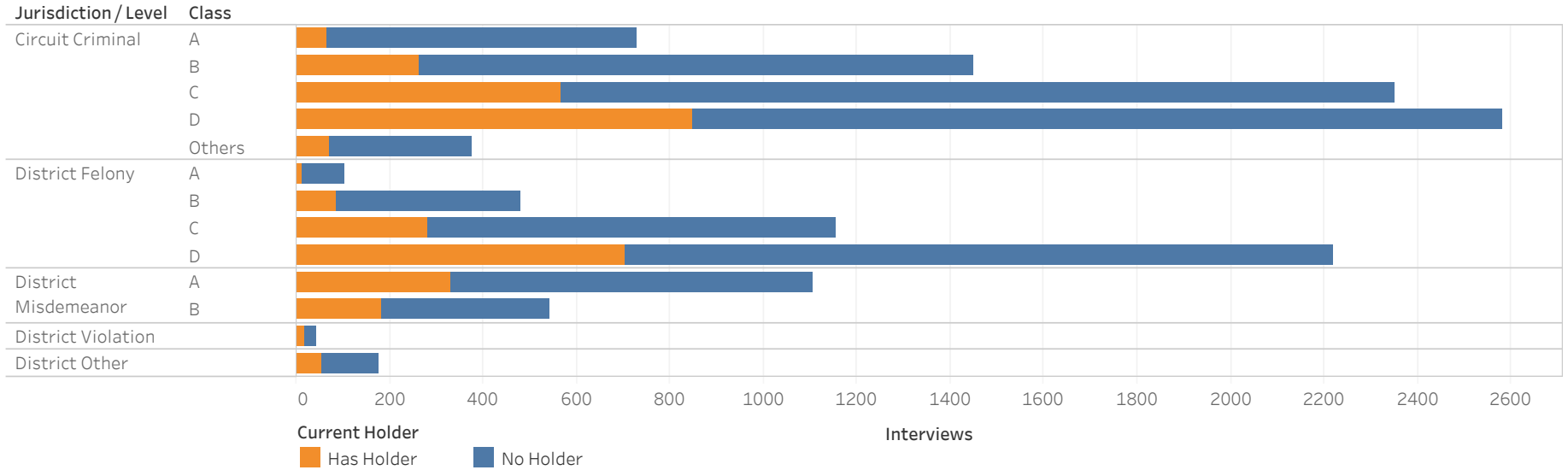
The data from this report is provided from the Pretrial Services program. Information received from the Pretrial Services program's electronic case management system (PRIM) is subject to change(s), reprogramming, modification(s) of format and availability at the direction of the Administrative Office of the Courts (AOC), and may not at any particular moment reflect the true status of court cases due to ordinary limitation(s), delay(s) or error(s) in the system's operation.



ADMINISTRATIVE OFFICE OF THE COURTS
Research and Statistics

22_PINS8002

Pretrial Interviews with Defendants in Custody as of January 17, 2022



Current Holder Reason	Jurisdiction / Level / Class													
	Circuit Criminal					District Felony				District Misdemeanor		District Other	District Violation	Grand Total
	A	B	C	D	Others	A	B	C	D	A	B			
No Holder	663	1,188	1,783	1,733	303	90	393	875	1,515	774	361	121	23	8,592
Federal Inmate	4	11	21	13	3	2	1	9	6	1	4	1		68
State Inmate	22	79	149	145	4	1	16	48	124	61	31	7	2	626
Parole	5	22	69	114	12	1	13	39	99	27	14	4		371
Probation	9	46	126	197	23	1	19	56	192	87	41	16	6	724
County Inmate	2	3	10	10			2	9	4	7	1	1	1	42
Contempt	5	26	39	73	6	3	9	18	48	33	18	10	1	241
Non-Payment Fines / Restitution	7	39	86	191	20	1	16	74	155	89	54	16	8	613
Other	11	36	68	105	4	2	10	28	76	28	19	2	2	336
Grand Total	728	1,450	2,351	2,581	375	101	479	1,156	2,219	1,107	543	178	43	11,613

Statistical Analysis Considerations

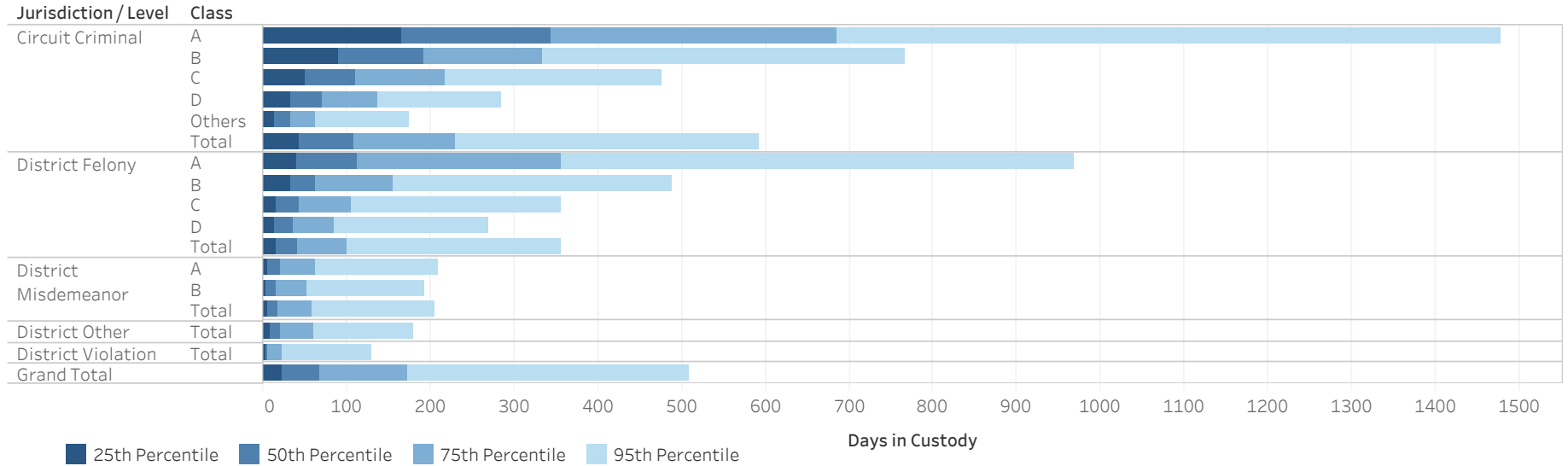
- * Data provided from the Pretrial Information Management System.
- * Counts reflect distinct pretrial interviews within a given jurisdiction (Circuit or District Court). Time in custody is evaluated separately for District and Circuit cases.
- * A single Interview may involve more than one case, and a single defendant may have multiple interviews during a given period of time.



ADMINISTRATIVE OFFICE OF THE COURTS
Research and Statistics

22_PINS8002

Pretrial Interviews with Defendants in Custody as of January 17, 2022
Time in Custody (Days)



Jurisdiction / Level	Class	25th Percentile	50th Percentile	75th Percentile	95th Percentile
Circuit Criminal	A	166	343	686	1,478
	B	89	191	333	766
	C	50	111	217	476
	D	32	71	137	285
	Others	14	32	62	174
Total		44	108	230	593
District Felony	A	39	113	355	969
	B	32	62	155	488
	C	15	44	105	355
	D	13	37	84	269
Total		15	42	100	355
District Misdemeanor	A	6	20	62	209
	B	4	15	52	194
Total		5	18	59	205
District Other	Total	8	21	60	179
District Violation	Total	3	6	22	129
Grand Total		22	68	172	509

Statistical Analysis Considerations

- * Data provided from the Pretrial Information Management System.
- * Counts reflect distinct pretrial interviews within a given jurisdiction (Circuit or District Court). Time in custody is evaluated separately for District and Circuit cases.
- * A single Interview may involve more than one case, and a single defendant may have multiple interviews during a given period of time.