



The Department of Information and Technology Services
Research and Statistics
1001 Vandalay Drive
Frankfort, KY 40601
(502) 573-2350

PRETRIAL INTERVIEWS WITH PRETRIAL CUSTODY ENDING CY 2015-21
ASSESSED AS LOW FTA RISK AND LOW NCA RISK, HAVING NO CUSTODY HOLDERS,
AND WITH MOST SERIOUS CHARGE OF CLASS D FELONY
NUMBER OF INTERVIEWS AND DAYS IN CUSTODY

January 20, 2022

Statistics Request Overall Description

Research and Statistics received a request for a report of the number of interviews and time in custody along with indications of outcome including Administrative Release for interviews assessed as low Failure to Appear (FTA) Risk and low New Criminal Activity (NCA) Risk, having no custody holder, and for which the most serious charge was a Class D Felony.

PRIM, the information system used by Pretrial Services, was queried for interviews in which pretrial custody ended from Calendar Year (CY) 2015 to 2021.

A pretrial interview may apply to multiple cases simultaneously and may receive one or more release decisions over time. The most recent release decision and outcome for any related case is reported for each interview uniquely for each jurisdiction (Circuit and District Court). If a single interview has at least one Circuit case and at least one District case, release decisions, release outcomes, and time in custody will be reported separately for each jurisdiction. A defendant is not considered released unless they are indicated as released on ALL cases of that jurisdiction included in an interview. For instance, a defendant may receive a recognizance bond for a case with minor charges but remain in custody on cash bail on a separate case.

Statistical Report (21_RS8001)

This report consists of a single page repeated for each Calendar Year from 2015 through 2021.

The visual at the top of the page presents the time in custody and number of interviews receiving the most common Release Outcomes for interviews with cases in each Jurisdiction (Circuit and District Court). The bar chart on the left depicts the number of interviews within each Jurisdiction and Release Outcome. Cells to the right of the center show the median number of days spent in Pretrial custody for each group. The chart on the right visualizes the 25th percentile, median, and 75th percentile of the number of days in custody for each group. Groups with smaller numbers are excluded from the visual.

The table presents the same information including all Release Outcomes. For each Jurisdiction and release outcome, the table includes the number of pretrial interviews, the number of related court cases; and the 25th percentile, median, 75th percentile, and total collective days in custody.

PRETRIAL INTERVIEWS WITH PRETRIAL CUSTODY ENDING CY 2015-21
 ASSESSED AS LOW FTA RISK AND LOW NCA RISK, HAVING NO CUSTODY HOLDERS,
 AND WITH MOST SERIOUS CHARGE OF CLASS D FELONY
 NUMBER OF INTERVIEWS AND DAYS IN CUSTODY

Statistical Report (21_RS8001)

Note that those Circuit Criminal Interviews for which the Circuit Court judge issues a summons for a defendant already on Pretrial Release from District Court without the defendant returning to custody do not have time in custody.

Statistical Analysis Considerations:

- The statistics presented in the attached tables are a snapshot in time as of the date the data was queried: 1/20/2022.
- An individual defendant may be involved in multiple interviews during the reported time frame.
- Each interview may involve one or more cases.
- Multiple bonds may be issued for a single case, and only the most recent bond for any case applicable to each interview reported.
- A defendant is reported as released from pretrial custody once release is indicated for all cases pertaining to the same pretrial interview.
- Counts of interviews count each interview only once. A single interview may have separate Release Decisions and Outcomes in Circuit and District Court. The same interview may appear in more than one subtotal within a table but will never be counted more than once in any cell, subtotal, or grand total.
- Time in custody is evaluated separately for interviews that have custody for both District and Circuit cases.
- Interviews with indictment summons do not return to custody following the indictment and are excluded from measurement of time in custody.

Data Variables Requested

Database	Data Variable	Description
PRIM	Custody End Date	The date on which a defendant is released from pretrial custody tracked as a pretrial interview. All cases must receive bond release or some other factor ending pretrial release (see Release Outcome). The custody end date is the most recent custody end date for any case related to the interview. For a case, the custody end date is the earliest of any non-bond release or other release as indicated below.
	Release Outcome	An indication of the manner in which a defendant was released from pretrial custody: Detained Until Disposition: Without being given pretrial release, the defendant was released upon the disposition of all cases in this interview from a given jurisdiction. Indictment: Indicates that pretrial custody on one or more District cases ended with an indictment to Circuit Court while

PRETRIAL INTERVIEWS WITH PRETRIAL CUSTODY ENDING CY 2015-21
 ASSESSED AS LOW FTA RISK AND LOW NCA RISK, HAVING NO CUSTODY HOLDERS,
 AND WITH MOST SERIOUS CHARGE OF CLASS D FELONY
 NUMBER OF INTERVIEWS AND DAYS IN CUSTODY

Data Variables Requested		
Database	Data Variable	Description
		<p>the defendant was in pretrial custody. Indictment outcomes reported outside of the District-Felony group typically result from expungement or charges amended up following the initial filing of the case.</p> <p>60-Day Rule: Released after 60 days of pretrial custody on a District Court case.</p> <p>Financial Release: Types of release in which money or property must be posted prior to release.</p> <ul style="list-style-type: none"> • 10% • Cash • Guaranteed Arrest Bond Certificate • Property • Partially Secured or Percent Bond • Stock and Bonds <p>Non-Financial Release: Types of release in which no money or property must be posted prior to release.</p> <ul style="list-style-type: none"> • Release on Recognizance • Surety • Unsecured • No Probable Cause • 60-Day Rule <p>Administrative Release: Released with Administrative Release as described above. Defendants assessed as low or moderate risk; not charged with offenses identified as public safety concerns, contempt, probation violation, bail jumping, the violation of a protection order, and who have not previously violated a condition of pretrial release or failed to appear in court may be released on their own recognizance without a bond hearing. The use of this option was discretionary per judge as of 11/1/2015 and became mandatory statewide on 1/1/2017. The specific criteria for Administrative Release have changed several times since initial implementation, including many changes implemented in response to the COVID-19 pandemic.</p> <p>Indictment Summons: Indicates that a defendant already released on a District Felony case was not brought back into</p>

PRETRIAL INTERVIEWS WITH PRETRIAL CUSTODY ENDING CY 2015-21
 ASSESSED AS LOW FTA RISK AND LOW NCA RISK, HAVING NO CUSTODY HOLDERS,
 AND WITH MOST SERIOUS CHARGE OF CLASS D FELONY
 NUMBER OF INTERVIEWS AND DAYS IN CUSTODY

Data Variables Requested		
Database	Data Variable	Description
		<p>custody following an indictment, but that the same release conditions were maintained by the Circuit Court and the defendant was issued a summons. There is no time in custody for this outcome.</p> <p>Transfer: Indicates that pretrial custody for all cases of a given jurisdiction related to this interview had pretrial custody end when the defendant was transferred to another secure facility or to a substance use treatment facility.</p> <p>Escape/Error: Indicates that a defendant was released in error or escaped.</p>
	Jurisdiction	The jurisdiction in which a criminal case was filed (Circuit or District Court). Interviews related to cases in both jurisdictions have custody reported separately for each jurisdiction.
	Holder Reason	<p>The factor other than judicial decision, if any, that holds a defendant in pretrial custody for a given interview. If a defendant is held by multiple factors, the most serious reason is reported per the hierarchy below:</p> <ul style="list-style-type: none"> • Federal Inmate • State Inmate • Parole • Probation • County Inmate • Contempt • Non-Payment of Fines / Restitution • Other
	FTA Risk Level	The qualitative level associated with the numeric Failure to Appear risk score of the Arnold Ventures PSA (Low, Moderate, High). FTA risk is assessed and presented independently from NCA risk.
	NCA Risk Level	The qualitative level associated with the numeric New Criminal Activity risk score of the Arnold Ventures PSA (Low, Moderate, High). FTA risk is assessed and presented independently from FTA risk.
	Interviews	The number of distinct pretrial interviews. The pretrial interview is the central data unit used in PRIM, capturing any data related to a discrete period of pretrial custody for a single defendant, which may apply to one or more cases. A

PRETRIAL INTERVIEWS WITH PRETRIAL CUSTODY ENDING CY 2015-21
 ASSESSED AS LOW FTA RISK AND LOW NCA RISK, HAVING NO CUSTODY HOLDERS,
 AND WITH MOST SERIOUS CHARGE OF CLASS D FELONY
 NUMBER OF INTERVIEWS AND DAYS IN CUSTODY

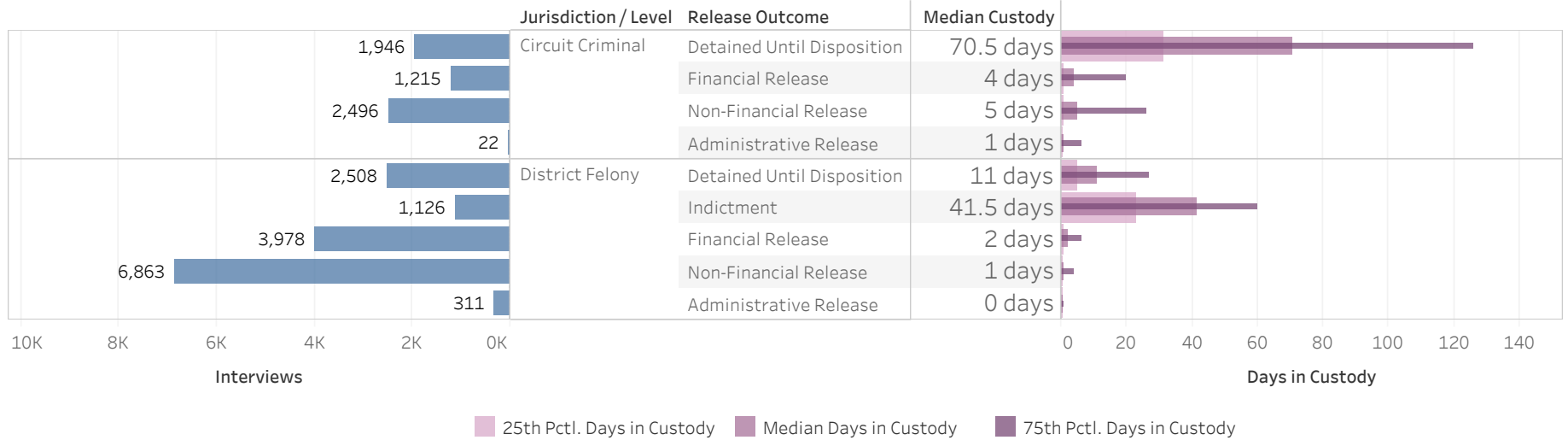
Data Variables Requested		
Database	Data Variable	Description
		single defendant may have multiple pretrial interviews during any given period of time. Release outcomes and measurements of time in custody are captured separately for each jurisdiction (Circuit and District Court) for any interview including at least one case from each jurisdiction.
	Cases	The total number of cases related to the reported interviews.
	Days in Custody	<p>The number of days in custody is calculated for each interview as the difference in days between the earliest booking date and most recent release date for any cases of the reported jurisdiction related to that pretrial interview. The following metrics of Days in Custody are reported:</p> <ul style="list-style-type: none"> • 25th Percentile (25th Pctl.): For a reported group, one quarter of the reported interviews spent this number of days in custody or less and three quarters spent this number of days in custody or more. Also known as first quartile. • Median: For a reported group, half of the reported interviews spent this number of days in custody or less and half spent this number of days in custody or more. Also known as 50th Percentile. • 75th Percentile (75th Pctl.): For a reported group, three quarters of the reported interviews spent this number of days in custody or less and one quarter spent this number of days in custody or more. Also known as third quartile. • Total Days in Custody: The total number of days spent in custody among the reported pretrial interviews.

Disclaimer Associated with KCOJ/AOC Database(s) and Element(s)

RESEARCH AND STATISTICS DISCLAIMER for PRETRIAL SERVICES REQUESTS
 The data from this report is provided from the Pretrial Services program. Information received from the Pretrial Services program’s electronic case management system (PRIM) is subject to change(s), reprogramming, modification(s) of format and availability at the direction of the Administrative Office of the Courts (AOC), and may not at any particular moment reflect the true status of court cases due to ordinary limitation(s), delay(s) or error(s) in the system's operation.

**ADMINISTRATIVE OFFICE OF THE COURTS
Research and Statistics**

**Pretrial Interviews with Pretrial Custody Ending 2015
Assessed as Low FTA Risk and Low NCA Risk, Having No Custody Holders, and with Most Serious Charge of Class D Felony**



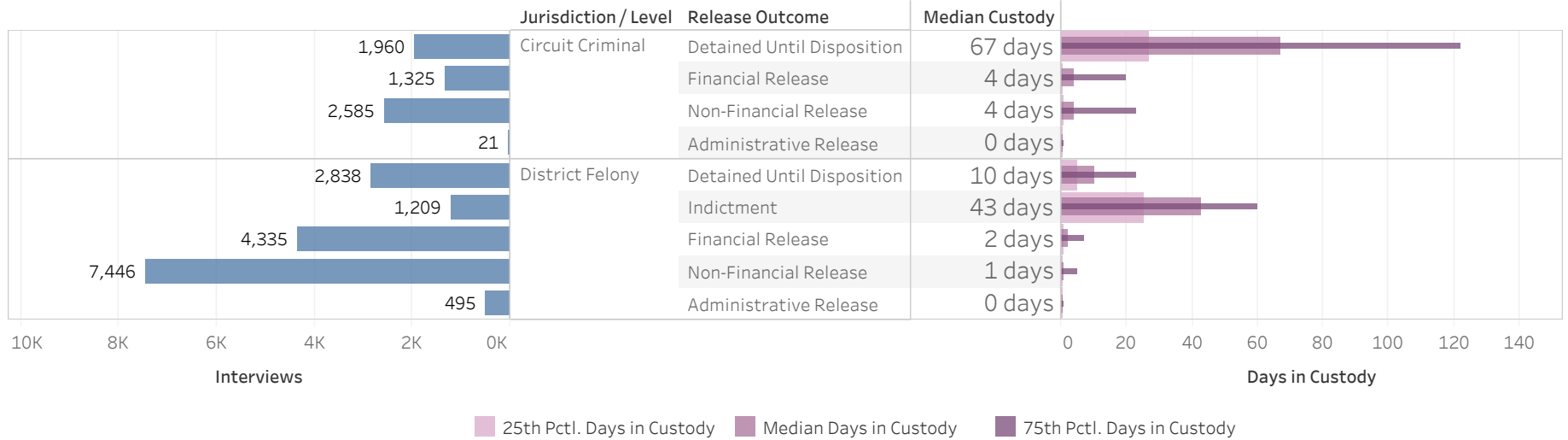
Jurisdiction		Detained Until Disposition	Indictment	60-Day Rule	Financial Release	Non-Financial Release	Administrative Release	Indictment Summons	Escape/Error	Grand Total
Circuit	Interviews	1,946			1,215	2,496	22	1,910	2	7,591
	Cases	2,291			1,303	2,687	22	1,929	2	8,234
	25th Pctl. Days in Custody	31			1	1	0		85	1
	Median Days in Custody	71			4	5	1		96	16
	75th Pctl. Days in Custody	126			20	26	6		106	67
	Total Days in Custody	182,951			25,691	71,801	331		191	280,965
District	Interviews	2,508	1,126	110	3,978	6,863	311		5	14,901
	Cases	3,365	1,378	132	4,579	7,802	319		7	17,582
	25th Pctl. Days in Custody	5	23	68	1	0	0		2	1
	Median Days in Custody	11	42	72	2	1	0		4	2
	75th Pctl. Days in Custody	27	60	79	6	4	1		28	11
	Total Days in Custody	70,037	51,460	8,435	29,236	44,247	167		271	203,853

Statistical Analysis Considerations

- * Data provided from the Pretrial Information Management System.
- * Counts reflect distinct pretrial interviews within a given jurisdiction (Circuit or District Court). Time in custody is evaluated separately for District and Circuit cases.
- * A single Interview may involve more than one case, and a single defendant may have multiple interviews during a given period of time.

**ADMINISTRATIVE OFFICE OF THE COURTS
Research and Statistics**

**Pretrial Interviews with Pretrial Custody Ending 2016
Assessed as Low FTA Risk and Low NCA Risk, Having No Custody Holders, and with Most Serious Charge of Class D Felony**



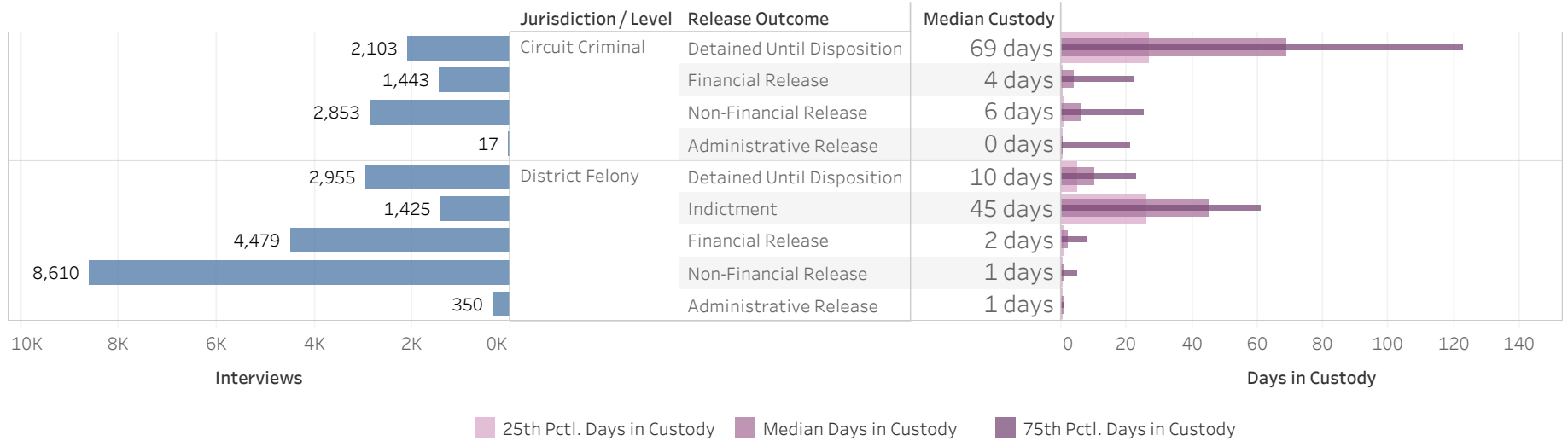
Jurisdiction		Detained Until Disposition	Indictment	60-Day Rule	Financial Release	Non-Financial Release	Administrative Release	Indictment Summons	Escape/Error	Grand Total
Circuit	Interviews	1,960			1,325	2,585	21	1,334	5	7,230
	Cases	2,312			1,450	2,786	21	1,347	5	7,921
	25th Pctl. Days in Custody	27			0	1	0		19	1
	Median Days in Custody	67			4	4	0		23	14
	75th Pctl. Days in Custody	122			20	23	1		82	61
	Total Days in Custody	174,894			29,663	69,696	83		227	274,563
District	Interviews	2,838	1,209	166	4,335	7,446	495		14	16,503
	Cases	3,776	1,528	213	5,024	8,493	518		31	19,583
	25th Pctl. Days in Custody	5	25	70	1	0	0		14	1
	Median Days in Custody	10	43	74	2	1	0		46	2
	75th Pctl. Days in Custody	23	60	82	7	5	1		74	11
	Total Days in Custody	74,305	56,490	13,951	33,574	54,116	406		1,082	233,924

Statistical Analysis Considerations

- * Data provided from the Pretrial Information Management System.
- * Counts reflect distinct pretrial interviews within a given jurisdiction (Circuit or District Court). Time in custody is evaluated separately for District and Circuit cases.
- * A single Interview may involve more than one case, and a single defendant may have multiple interviews during a given period of time.

**ADMINISTRATIVE OFFICE OF THE COURTS
Research and Statistics**

**Pretrial Interviews with Pretrial Custody Ending 2017
Assessed as Low FTA Risk and Low NCA Risk, Having No Custody Holders, and with Most Serious Charge of Class D Felony**



Jurisdiction		Detained Until Disposition	Indictment	60-Day Rule	Financial Release	Non-Financial Release	Administrative Release	Indictment Summons	Transfer	Escape/Error	Grand Total
Circuit	Interviews	2,103			1,443	2,853	17	1,795		17	8,228
	Cases	2,505			1,540	3,040	17	1,801		18	8,921
	25th Pctl. Days in Custody	27			0	1	0			1	1
	Median Days in Custody	69			4	6	0			12	14
	75th Pctl. Days in Custody	123			22	25	21			40	63
	Total Days in Custody	193,563			35,971	78,889	226			990	309,639
District	Interviews	2,955	1,425	157	4,479	8,610	350		2	35	18,013
	Cases	3,915	1,764	187	5,085	9,711	440		4	62	21,168
	25th Pctl. Days in Custody	5	26	70	1	0	0		81	7	1
	Median Days in Custody	10	45	75	2	1	1		130	28	3
	75th Pctl. Days in Custody	23	61	84	8	5	1		180	73	11
	Total Days in Custody	78,806	68,482	12,453	32,673	59,100	953		260	2,484	255,211

Statistical Analysis Considerations

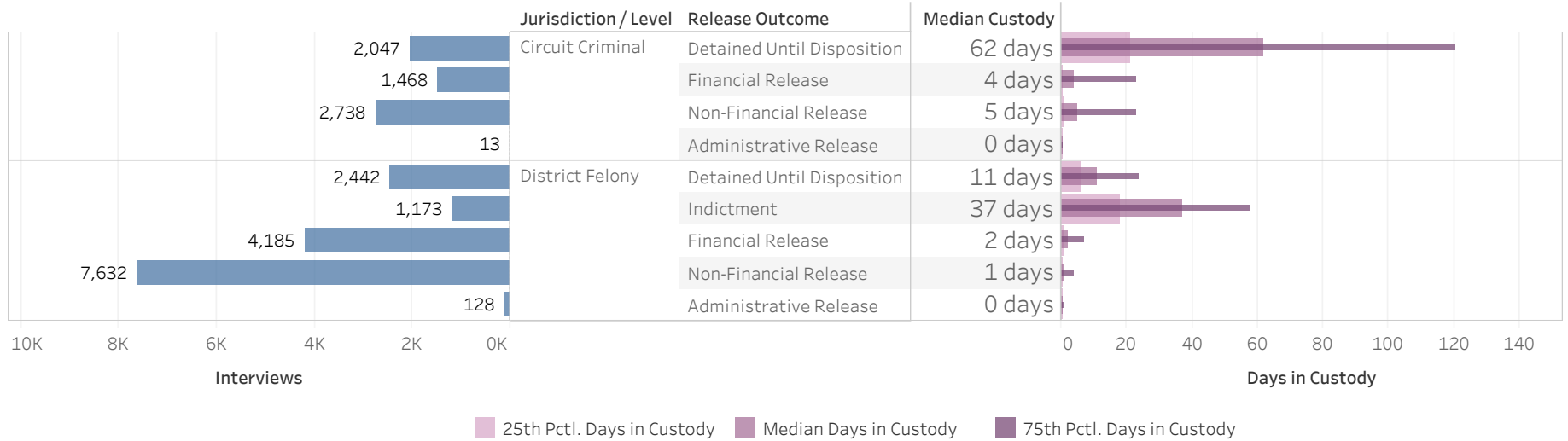
* Data provided from the Pretrial Information Management System.

* Counts reflect distinct pretrial interviews within a given jurisdiction (Circuit or District Court). Time in custody is evaluated separately for District and Circuit cases.

* A single Interview may involve more than one case, and a single defendant may have multiple interviews during a given period of time.

**ADMINISTRATIVE OFFICE OF THE COURTS
Research and Statistics**

**Pretrial Interviews with Pretrial Custody Ending 2018
Assessed as Low FTA Risk and Low NCA Risk, Having No Custody Holders, and with Most Serious Charge of Class D Felony**



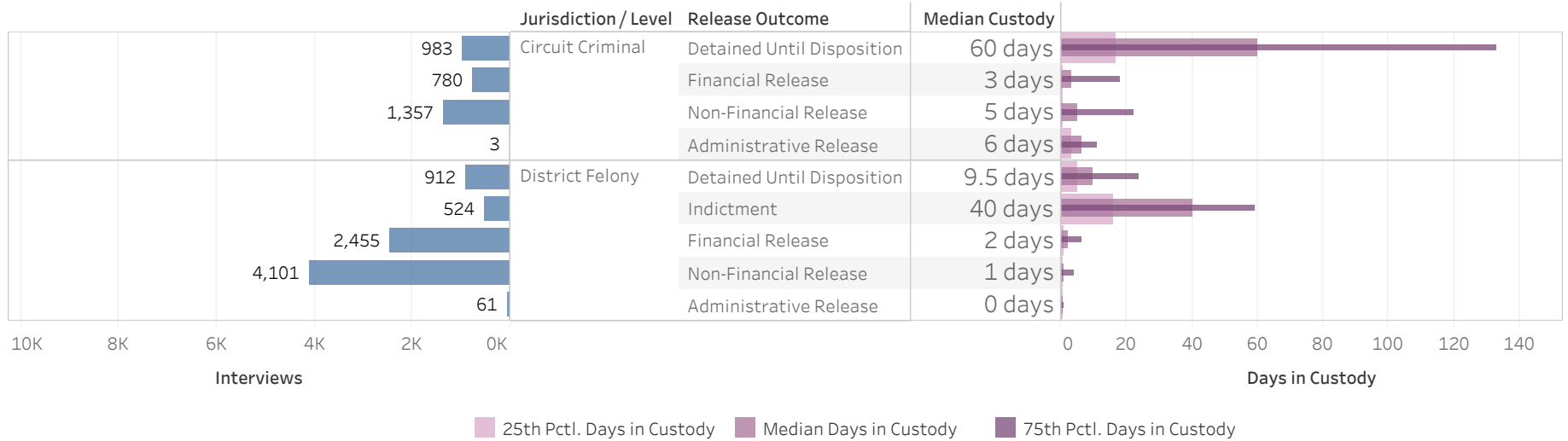
Jurisdiction		Detained Until Disposition	Indictment	60-Day Rule	Financial Release	Non-Financial Release	Administrative Release	Indictment Summons	Transfer	Escape/Error	Grand Total
Circuit	Interviews	2,047			1,468	2,738	13	2,075	1	8	8,350
	Cases	2,444			1,584	2,932	14	2,092	1	10	9,077
	25th Pctl. Days in Custody	21			0	1	0		1	11	1
	Median Days in Custody	62			4	5	0		1	37	13
	75th Pctl. Days in Custody	121			23	23	0		1	116	60
	Total Days in Custody	184,329			40,816	79,951	410		1	489	305,996
District	Interviews	2,442	1,173	116	4,185	7,632	128			16	15,692
	Cases	3,062	1,395	139	4,701	8,558	158			34	18,047
	25th Pctl. Days in Custody	6	18	68	1	0	0			23	1
	Median Days in Custody	11	37	73	2	1	0			72	2
	75th Pctl. Days in Custody	24	58	77	7	4	1			226	11
	Total Days in Custody	68,308	49,575	9,513	35,160	49,938	369			2,631	215,494

Statistical Analysis Considerations

- * Data provided from the Pretrial Information Management System.
- * Counts reflect distinct pretrial interviews within a given jurisdiction (Circuit or District Court). Time in custody is evaluated separately for District and Circuit cases.
- * A single Interview may involve more than one case, and a single defendant may have multiple interviews during a given period of time.

**ADMINISTRATIVE OFFICE OF THE COURTS
Research and Statistics**

**Pretrial Interviews with Pretrial Custody Ending 2019
Assessed as Low FTA Risk and Low NCA Risk, Having No Custody Holders, and with Most Serious Charge of Class D Felony**



Jurisdiction		Detained Until Disposition	Indictment	60-Day Rule	Financial Release	Non-Financial Release	Administrative Release	Indictment Summons	Transfer	Escape/Error	Grand Total
Circuit	Interviews	983			780	1,357	3	1,507	6		4,636
	Cases	1,151			836	1,506	3	1,523	6		5,025
	25th Pctl. Days in Custody	17			0	0	3		18		1
	Median Days in Custody	60			3	5	6		39		11
	75th Pctl. Days in Custody	133			18	22	11		55		57
	Total Days in Custody	99,941			23,657	43,952	22		449		168,021
District	Interviews	912	524	45	2,455	4,101	61		3	8	8,109
	Cases	1,144	624	54	2,710	4,520	84		3	10	9,149
	25th Pctl. Days in Custody	5	16	69	1	0	0		18	5	1
	Median Days in Custody	10	40	72	2	1	0		24	54	2
	75th Pctl. Days in Custody	24	59	76	6	4	1		69	260	9
	Total Days in Custody	26,153	23,693	3,912	18,174	30,384	517		149	1,660	104,642

Statistical Analysis Considerations

* Data provided from the Pretrial Information Management System.

* Counts reflect distinct pretrial interviews within a given jurisdiction (Circuit or District Court). Time in custody is evaluated separately for District and Circuit cases.

* A single Interview may involve more than one case, and a single defendant may have multiple interviews during a given period of time.

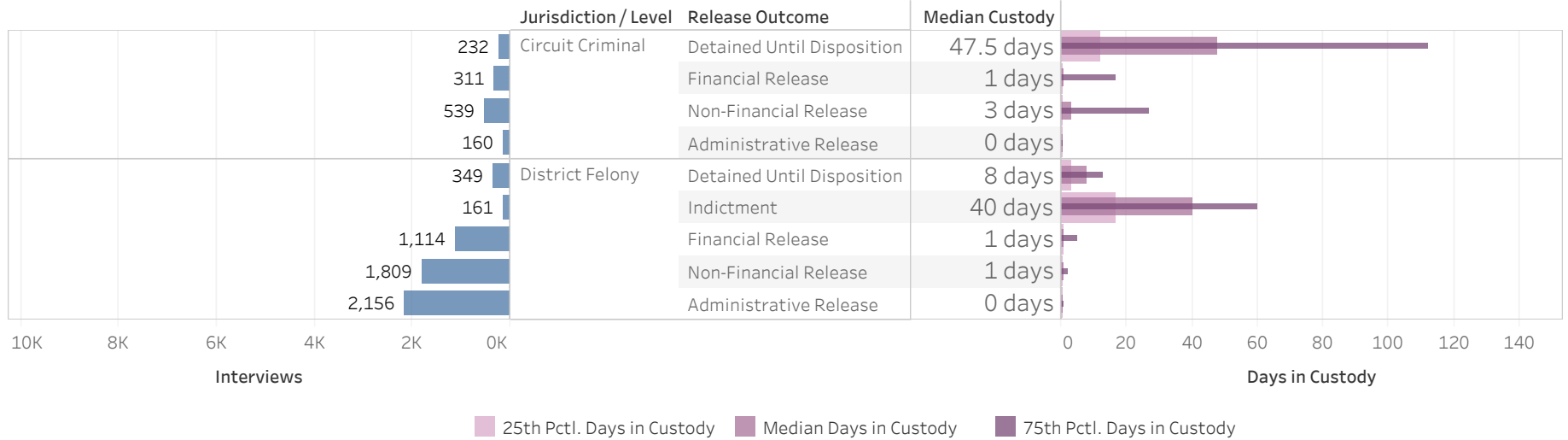
Run Date:

1/21/2022

Page 5 of 7

**ADMINISTRATIVE OFFICE OF THE COURTS
Research and Statistics**

**Pretrial Interviews with Pretrial Custody Ending 2020
Assessed as Low FTA Risk and Low NCA Risk, Having No Custody Holders, and with Most Serious Charge of Class D Felony**



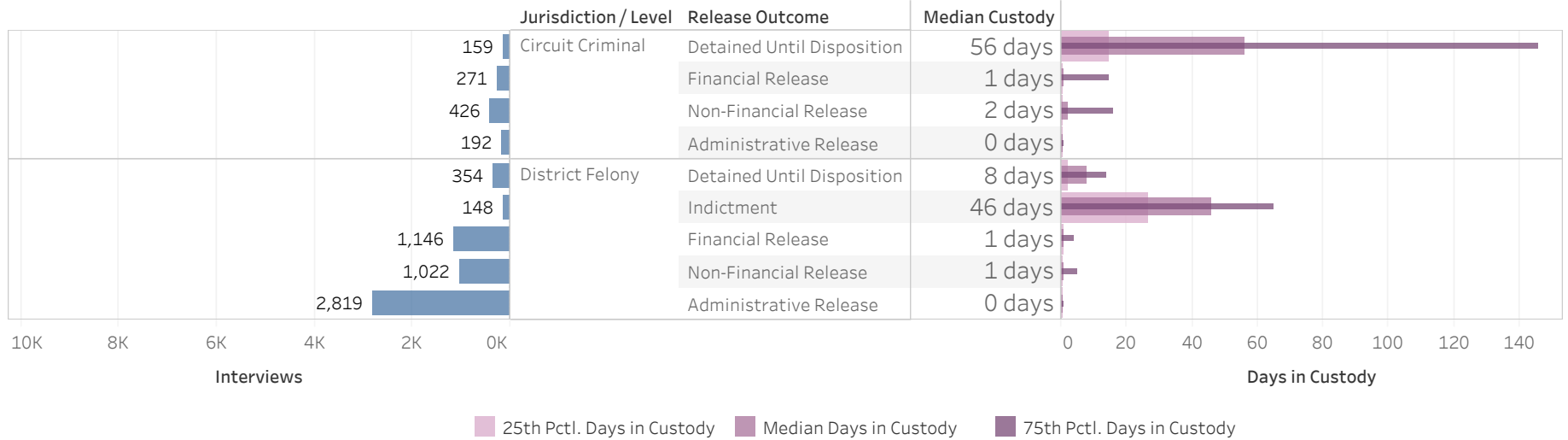
Jurisdiction		Detained Until Disposition	Indictment	60-Day Rule	Financial Release	Non-Financial Release	Administrative Release	Indictment Summons	Transfer	Escape/Error	Grand Total
Circuit	Interviews	232			311	539	160	953	1	1	2,197
	Cases	254			336	577	165	963	1	1	2,297
	25th Pctl. Days in Custody	12			0	0	0		49	70	0
	Median Days in Custody	48			1	3	0		49	70	2
	75th Pctl. Days in Custody	112			17	27	0		49	70	33
	Total Days in Custody	24,296			18,146	31,281	90		49	70	73,932
District	Interviews	349	161	16	1,114	1,809	2,156		8	4	5,617
	Cases	418	189	16	1,200	1,946	2,338		9	6	6,122
	25th Pctl. Days in Custody	3	17	71	1	0	0		14	11	0
	Median Days in Custody	8	40	79	1	1	0		23	30	1
	75th Pctl. Days in Custody	13	60	112	5	2	1		29	165	2
	Total Days in Custody	7,391	7,605	2,316	6,774	7,582	1,111		450	583	33,812

Statistical Analysis Considerations

- * Data provided from the Pretrial Information Management System.
- * Counts reflect distinct pretrial interviews within a given jurisdiction (Circuit or District Court). Time in custody is evaluated separately for District and Circuit cases.
- * A single Interview may involve more than one case, and a single defendant may have multiple interviews during a given period of time.

ADMINISTRATIVE OFFICE OF THE COURTS
Research and Statistics

Pretrial Interviews with Pretrial Custody Ending 2021
Assessed as Low FTA Risk and Low NCA Risk, Having No Custody Holders, and with Most Serious Charge of Class D Felony



Jurisdiction		Detained Until Disposition	Indictment	60-Day Rule	Financial Release	Non-Financial Release	Administrative Release	Indictment Summons	Transfer	Escape/Error	Grand Total
Circuit	Interviews	159			271	426	192	806	9		1,863
	Cases	173			283	456	198	811	9		1,930
	25th Pctl. Days in Custody	15			0	0	0		39		0
	Median Days in Custody	56			1	2	0		43		1
	75th Pctl. Days in Custody	146			15	16	1		146		24
	Total Days in Custody	18,613			6,684	16,475	768		2,568		45,108
District	Interviews	354	148	17	1,146	1,022	2,819		9	3	5,518
	Cases	407	170	23	1,245	1,149	2,982		9	4	5,989
	25th Pctl. Days in Custody	2	27	75	1	0	0		8	5	0
	Median Days in Custody	8	46	78	1	1	0		13	9	1
	75th Pctl. Days in Custody	14	65	95	4	5	1		20	102	2
	Total Days in Custody	5,768	8,015	1,482	8,111	5,934	1,739		126	204	31,379

Statistical Analysis Considerations

- * Data provided from the Pretrial Information Management System.
- * Counts reflect distinct pretrial interviews within a given jurisdiction (Circuit or District Court). Time in custody is evaluated separately for District and Circuit cases.
- * A single Interview may involve more than one case, and a single defendant may have multiple interviews during a given period of time.