



The Department of Information and Technology Services  
Research and Statistics  
1001 Vandalay Drive  
Frankfort, KY 40601  
(502) 573-2350

---

## PRETRIAL INTERVIEWS WITH DEFENDANTS IN CUSTODY 1/25/2022

ASSESSED AS LOW FTA AND LOW NCA RISK  
NUMBER OF INTERVIEWS AND DAYS IN CUSTODY

---

January 26, 2022

### Statistics Request Overall Description

Research and Statistics received a request for a report of the number of interviews and time in custody for those defendants currently in Pretrial Custody who were assessed as Low Risk for Failure to Appear (FTA) and Low Risk for New Criminal Activity (NCA). A total number of defendants with interviews in custody without Custody Holders for whom the most serious charge is a Class D Felony was requested along with data about those with other level/class of most serious charge and those with Custody Holders. Separate counts for each Holding County was also requested.

PRIM, the information system used by Pretrial Services, was queried for interviews in which a defendant was in custody as of an automated compilation performed in the early morning of January 26, 2022.

As of this snapshot, there were a total of 173 distinct defendants in custody with 98 in custody for Circuit Criminal cases and 78 in custody for District Criminal cases, implying that three defendants are in custody for cases in both jurisdictions at once. In the remainder of the report, interviews are counted discretely for Circuit and District Court.

### Statistical Report (22\_PINS8002)

The report contains four pages. The first page presents the number of interviews with defendants in custody who were assessed as Low FTA and Low NCA risk. The second page presents data about the time defendants have so far spent in custody for cases in the specified jurisdiction and is limited to those defendants assessed as Low FTA and Low NCA risk and that do not have Current Custody Holders. The third and fourth pages present counts of these interviews separated by Holding County. Total counts of distinct defendants from either jurisdiction are presented on a map on the third page and counts of distinct defendants, pretrial interviews, and the total number of related court cases are presented in a table

The first and second pages each consists of a bar chart visualization and a cross tabulation. All data presented is grouped by the Jurisdiction and highest penalty level and class within any cases related to a given pretrial interview in the specified jurisdiction.

On the first page, the bar chart distinguishes by color between those interviews in which there is an active custody holder and those for which there is not. A darker color is used to emphasize Class D

---

---

# PRETRIAL INTERVIEWS WITH DEFENDANTS IN CUSTODY 1/25/2022

ASSESSED AS LOW FTA AND LOW NCA RISK  
NUMBER OF INTERVIEWS AND DAYS IN CUSTODY

---

---

## Statistical Report (22\_PINS8002)

felonies. The table at the bottom provides separate counts for those interviews by the reason for the current custody holder and for those interviews without an active custody holder.

On the second page, the bar chart presents the 25<sup>th</sup> Percentile, 50<sup>th</sup> Percentile (median), 75<sup>th</sup> Percentile, and 95<sup>th</sup> Percentile of the days spent in custody by defendants of the indicated Jurisdiction & highest level / class. The same data is also presented in the cross-tabulation.

Total counts of distinct defendants from either jurisdiction assessed as Low FTA and Low NCA risk, with no custody holders, and for whom the most serious charge is a Class D Felony are presented on a map on the third page.

The fourth page includes a cross-tabulation of counts of distinct defendants, pretrial interviews, and the total number of related court cases by jurisdiction and holding county for those interviews assessed as Low FTA and Low NCA risk, with no custody holders, and for whom the most serious charge is a Class D Felony. The number of related court cases is the total number of cases related to the interview in the specified jurisdiction. At least one case but not necessarily all cases related to each interview contain at least one Class D Felony.

### Statistical Analysis Considerations:

- The statistics presented in the attached tables are a snapshot in time as of the date the data was queried: 1/26/2022.
- Each interview may involve one or more cases.
- Counts of interviews count each interview only once. A single interview may have separate Release Decisions and Outcomes in Circuit and District Court. The same interview may appear in more than one subtotal within a table but will never be counted more than once in any cell, subtotal, or grand total.
- Time in custody is evaluated separately for interviews that have custody for both District and Circuit cases.

## Data Variables Requested

Database	Data Variable	Description
	Jurisdiction/Level	Indicates the Jurisdiction and the most serious charge of any case applicable to the pretrial interview. Interviews in which a defendant was in custody for both Circuit and District cases are counted and have time in custody reported separately for each jurisdiction. <ul style="list-style-type: none"><li>• Circuit Criminal – all interviews and custody related to Circuit Criminal cases.</li><li>• District Felony – interviews and custody related to District Criminal cases in which at least one case related to the interview includes a felony level charge.</li></ul>

# PRETRIAL INTERVIEWS WITH DEFENDANTS IN CUSTODY 1/25/2022

ASSESSED AS LOW FTA AND LOW NCA RISK  
 NUMBER OF INTERVIEWS AND DAYS IN CUSTODY

Data Variables Requested		
Database	Data Variable	Description
		<ul style="list-style-type: none"> <li>• District Misdemeanor – interviews and custody related to District Criminal cases in which at least one case related to the interview includes a misdemeanor level charge and no cases include felony charges.</li> <li>• District Violation – interviews and custody related to District Criminal cases in which at least one case related to the interview includes a violation level charge and no cases include felony or misdemeanor charges.</li> <li>• District Other – interviews and custody related to District Criminal cases containing no felony, misdemeanor, or violation level charges. These cases typically relate to post-disposition charges such as probation violations, violations of release conditions, contempt, etc.</li> </ul>
	Penalty Class	<p>The class of the charge with the most serious penalty level and class within any case related from the indicated jurisdiction related to an interview.</p> <ul style="list-style-type: none"> <li>• <b>Class A Felony:</b> 20 years or greater. All capital offenses are also Class A Felonies.</li> <li>• <b>Class B Felony:</b> Ten years or greater and less than 20 years.</li> <li>• <b>Class C Felony:</b> Five years or greater and less than ten years.</li> <li>• <b>Class D Felony:</b> One year or greater and less than five years.</li> <li>• <b>Class A Misdemeanor:</b> 90 Days or greater and less than one year.</li> <li>• <b>Class B Misdemeanor:</b> Less than 90 days.</li> </ul> <p>Interviews with Circuit Court cases involving charges with penalty levels other than Felonies of Classes A, B, C, and D are reported together as others. These include interviews with a felony-level offense with ambiguous such as Persistent Felony Offender but no other specified felony charge, or situations in which a Pretrial Interview occurs due to a post-disposition offense such as a probation violation.</p>
	Holder Reason	<p>The factor other than judicial decision, if any, that holds a defendant in pretrial custody for a given interview. If a defendant is held by multiple factors, the most serious reason is reported per the hierarchy below:</p> <ul style="list-style-type: none"> <li>• Federal Inmate</li> <li>• State Inmate</li> </ul>

---

---

## PRETRIAL INTERVIEWS WITH DEFENDANTS IN CUSTODY 1/25/2022

ASSESSED AS LOW FTA AND LOW NCA RISK  
NUMBER OF INTERVIEWS AND DAYS IN CUSTODY

---

---

Data Variables Requested		
Database	Data Variable	Description
		<ul style="list-style-type: none"><li>• Parole</li><li>• Probation</li><li>• County Inmate</li><li>• Contempt</li><li>• Non-Payment of Fines / Restitution</li><li>• Other</li></ul>
	FTA Risk Level	The qualitative level associated with the numeric Failure to Appear risk score of the Arnold Ventures PSA (Low, Moderate, High). FTA risk is assessed and presented independently from NCA risk.
	NCA Risk Level	The qualitative level associated with the numeric New Criminal Activity risk score of the Arnold Ventures PSA (Low, Moderate, High). FTA risk is assessed and presented independently from FTA risk.
	Interviews	The number of distinct pretrial interviews. The pretrial interview is the central data unit used in PRIM, capturing any data related to a discrete period of pretrial custody for a single defendant, which may apply to one or more cases. A single defendant may have multiple pretrial interviews during any given period of time. Release outcomes and measurements of time in custody are captured separately for each jurisdiction (Circuit and District Court) for any interview including at least one case from each jurisdiction.
	Days in Custody	The number of days in custody is calculated for each interview as the difference in days between the earliest booking date for any case related to the interview and the date of the query. The following metrics of Days in Custody are reported: <ul style="list-style-type: none"><li>• <b>25<sup>th</sup> Percentile:</b> For a reported group, one quarter of the reported interviews have spent this number of days in custody or less and three quarters have spent this number of days in custody or more. Also known as first quartile.</li><li>• <b>50<sup>th</sup> Percentile (Median):</b> For a reported group, half of the reported interviews have spent this number of days in custody or less and half have spent this number of days in custody or more.</li><li>• <b>75<sup>th</sup> Percentile:</b> For a reported group, three quarters of the reported interviews have spent this number of days in custody or less and one quarter have spent this number of days in custody or more. Also known as third quartile.</li></ul>

---

---

# PRETRIAL INTERVIEWS WITH DEFENDANTS IN CUSTODY 1/25/2022

ASSESSED AS LOW FTA AND LOW NCA RISK  
NUMBER OF INTERVIEWS AND DAYS IN CUSTODY

---

---

## Data Variables Requested

Database	Data Variable	Description
		<ul style="list-style-type: none"><li>• <b>95<sup>th</sup> Percentile:</b> For a reported group, 95% of the reported interviews have spent this number of days in custody or less and 5% have spent this number of days in custody or more.</li></ul>

## Disclaimer Associated with KCOJ/AOC Database(s) and Element(s)

### RESEARCH AND STATISTICS DISCLAIMER for PRETRIAL SERVICES REQUESTS

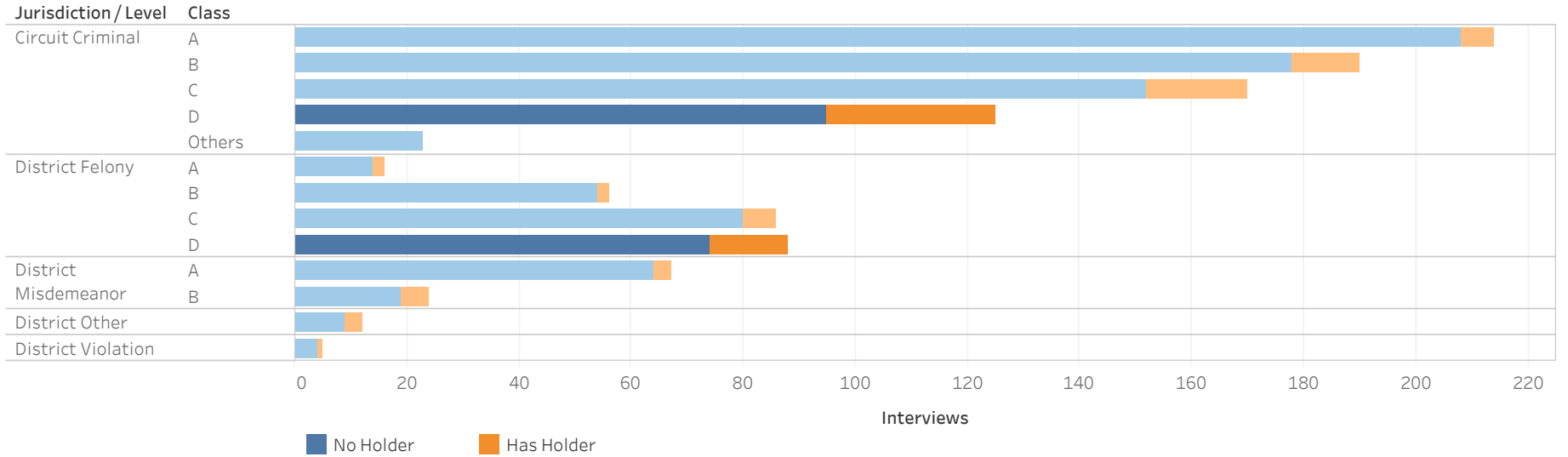
The data from this report is provided from the Pretrial Services program. Information received from the Pretrial Services program's electronic case management system (PRIM) is subject to change(s), reprogramming, modification(s) of format and availability at the direction of the Administrative Office of the Courts (AOC), and may not at any particular moment reflect the true status of court cases due to ordinary limitation(s), delay(s) or error(s) in the system's operation.



ADMINISTRATIVE OFFICE OF THE COURTS  
Research and Statistics

22\_PINS8002

Pretrial Interviews with Defendants in Custody as of January 25, 2022  
Assessed as Low FTA and Low NCA Risk



Current Holder Reason	Jurisdiction / Level / Class													Grand Total
	Circuit Criminal					District Felony				District Misdemeanor		District Other	District Violation	
	A	B	C	D	Others	A	B	C	D	A	B			
No Holder	208	178	152	95	23	14	54	80	74	64	19	9	4	940
Federal Inmate	1	4	3	3							1			12
State Inmate		2	3	5					1					11
Parole			1	1										2
Probation			5	9		1			5	1		1		22
County Inmate	1												1	2
Contempt			1	2				1	3	1				7
Non-Payment Fines / Restitution	1		1	5			2	2	2		3	2		17
Other	3	6	4	5		1		3	3	1	1			27
<b>Grand Total</b>	<b>214</b>	<b>190</b>	<b>170</b>	<b>125</b>	<b>23</b>	<b>16</b>	<b>56</b>	<b>86</b>	<b>88</b>	<b>67</b>	<b>24</b>	<b>12</b>	<b>5</b>	<b>1,040</b>

Statistical Analysis Considerations

\* Data provided from the Pretrial Information Management System.

\* Counts reflect distinct pretrial interviews within a given jurisdiction (Circuit or District Court). Time in custody is evaluated separately for District and Circuit cases.

\* A single Interview may involve more than one case, and a single defendant may have multiple interviews during a given period of time.

Run Date:

1/26/2022

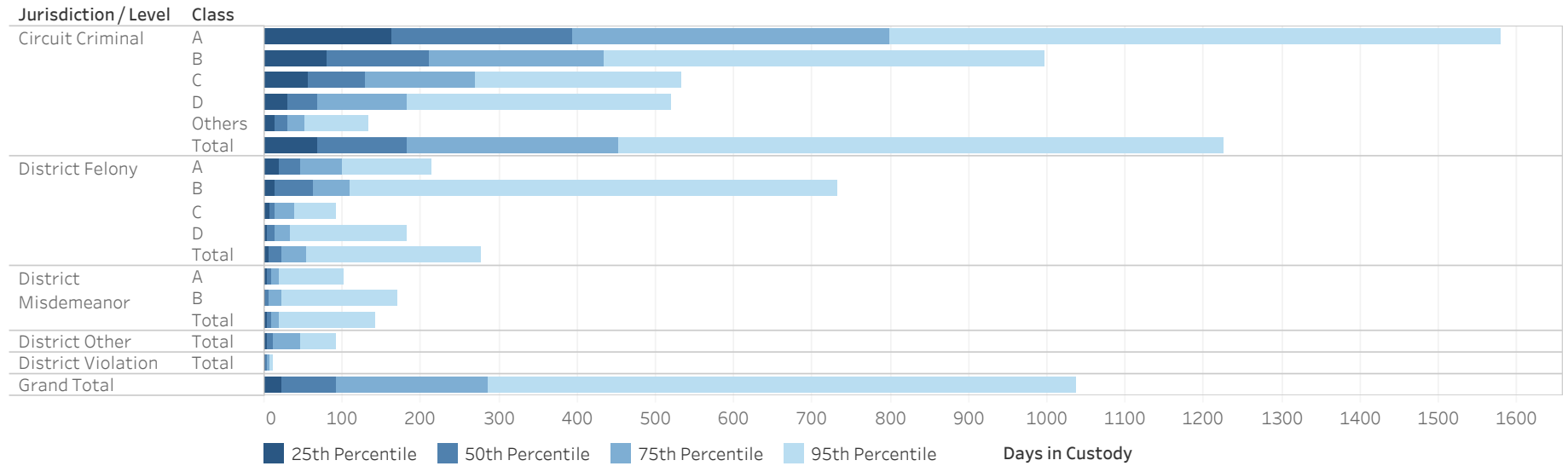
Page 1 of 4



ADMINISTRATIVE OFFICE OF THE COURTS  
Research and Statistics

22\_PINS8002

Pretrial Interviews with Defendants in Custody as of January 25, 2022  
Assessed as Low FTA and Low NCA Risk and Having No Custody Holder  
Time in Custody (Days)



Jurisdiction / Level	Class	25th Percentile	50th Percentile	75th Percentile	95th Percentile
Circuit Criminal	A	160	386	800	1,604
	B	83	222	442	1,013
	C	55	131	267	546
	D	36	91	182	509
	Others	13	29	51	133
	<b>Total</b>	<b>69</b>	<b>175</b>	<b>434</b>	<b>1,216</b>
District Felony	A	19	39	92	194
	B	14	62	109	711
	C	8	18	41	85
	D	5	16	38	164
	<b>Total</b>	<b>8</b>	<b>25</b>	<b>54</b>	<b>228</b>
District Misdemeanor	A	3	10	19	110
	B	2	7	34	225
	<b>Total</b>	<b>3</b>	<b>10</b>	<b>20</b>	<b>161</b>
District Other	Total	4	33	56	118
District Violation	Total	2	5	13	80
<b>Grand Total</b>		<b>23</b>	<b>93</b>	<b>280</b>	<b>1,026</b>

Statistical Analysis Considerations

- \* Data provided from the Pretrial Information Management System.
- \* Counts reflect distinct pretrial interviews within a given jurisdiction (Circuit or District Court). Time in custody is evaluated separately for District and Circuit cases.
- \* A single Interview may involve more than one case, and a single defendant may have multiple interviews during a given period of time.







**ADMINISTRATIVE OFFICE OF THE COURTS**  
**Research and Statistics**

22\_PINS8002

**Pretrial Interviews with Defendants in Custody as of January 25, 2022**  
**Assessed as Low FTA and Low NCA Risk and Having No Custody Holder**

Holding County	Circuit			Jurisdiction District			Total		
	Defendants	Interviews	Court Cases	Defendants	Interviews	Court Cases	Defendants	Interviews	Court Cases
ADAIR	2	2	2				2	2	2
BALLARD				1	1	1	1	1	1
BARREN				1	1	1	1	1	1
BELL	1	1	1				1	1	1
BOONE	2	2	2	2	2	2	4	4	4
BOYD	11	11	12	1	1	1	12	12	13
BOYLE				1	1	1	1	1	1
BRECKINRIDGE	1	1	1				1	1	1
BULLITT				1	1	1	1	1	1
BUTLER	2	2	2				2	2	2
CALLOWAY	1	1	1	1	1	2	2	2	3
CAMPBELL	5	5	6	1	1	1	6	6	7
CARROLL				2	2	2	2	2	2
CASEY	2	2	2				2	2	2
CHRISTIAN	3	3	3	5	5	5	8	8	8
CLARK	2	2	2	1	1	1	3	3	3
CLAY	2	2	3				2	2	3
CRITTENDEN	2	2	2	1	1	1	3	3	3
DAVIESS	2	2	2	1	1	1	3	3	3
FAYETTE	3	3	3	5	5	7	8	8	10
FLOYD				1	1	1	1	1	1
GRANT	1	1	1				1	1	1
GRAYSON	1	1	1				1	1	1
GREENUP	1	1	1				1	1	1
HARDIN	6	6	6	1	1	1	7	7	7
HART	1	1	1				1	1	1
HENDERSON	1	1	1	1	1	1	2	2	2
HOPKINS				2	2	3	2	2	3
JACKSON				1	1	1	1	1	1
JEFFERSON	1	1	1	12	12	15	13	13	16
JOHNSON	1	1	1				1	1	1
KENTON	2	2	2	1	1	2	3	3	4
KNOX	2	2	2				2	2	2
LARUE	1	1	1				1	1	1
LAUREL	2	2	2	1	1	1	3	3	3
LEE	4	4	5	2	2	2	5	5	7
LESLIE				2	2	2	2	2	2
LETCHER	1	1	1				1	1	1
LOGAN	1	1	1	4	4	5	5	5	6
MADISON	3	3	3				3	3	3
MARION	2	2	3				2	2	3
MARSHALL	1	1	1				1	1	1
MASON				1	1	2	1	1	2
MCCRACKEN	2	2	3	5	5	6	6	6	9
MEADE	1	1	1	1	1	1	1	1	2
MONTGOMERY	1	1	1				1	1	1
MUHLENBERG				2	2	2	2	2	2
OHIO				1	1	1	1	1	1
OLDHAM	1	1	1	1	1	1	2	2	2
PERRY				1	1	2	1	1	2
PIKE	1	1	1				1	1	1
POWELL	1	1	1	1	1	1	2	2	2
PULASKI	1	1	1				1	1	1
ROCKCASTLE	1	1	1				1	1	1
ROWAN	2	2	2	4	4	4	6	6	6
SCOTT				1	1	1	1	1	1
SHELBY	2	2	2	1	1	1	3	3	3
SIMPSON	3	3	3	1	1	1	4	4	4
TAYLOR	1	1	3				1	1	3
WARREN				2	2	2	2	2	2
WEBSTER	1	1	1				1	1	1
WHITLEY	2	2	2				2	2	2
WOODFORD	2	2	3				2	2	3
<b>Grand Total</b>	<b>95</b>	<b>95</b>	<b>104</b>	<b>74</b>	<b>74</b>	<b>86</b>	<b>166</b>	<b>166</b>	<b>190</b>

**Statistical Analysis Considerations**

\* Data provided from the Pretrial Information Management System.

\* Counts reflect distinct pretrial interviews within a given jurisdiction (Circuit or District Court). Time in custody is evaluated separately for District and Circuit cases.

\* A single Interview may involve more than one case, and a single defendant may have multiple interviews during a given period of time.

Run Date:

1/26/2022

Page 4 of 4