



The Department of Information and Technology Services
Research and Statistics
1001 Vandalay Drive
Frankfort, KY 40601
(502) 573-2350

RECIDIVISM STATISTICS FOR COMPLAINTS WITH SPECIFIED OFFENSES OR WITH FIREARM WEAPON IDENTIFIED IN CDW CMS FILED JANUARY 1, 2014 – DECEMBER 31, 2022, STATEWIDE

April 1, 2024

By

Christopher Garrison (*Data Analysis Specialist*)
Daniel Sturtevant (*Data Officer*)
Lyn Guarnieri (*Research and Statistics Team Lead*)

Statistics Request Overall Description

On February 22, 2024, Research and Statistics received a request from the Legislative Research Commission for a report of recidivism statistics for complaints filed between Calendar Years (CY) 2014 and 2022 (January 1, 2014 – December 31, 2022) that include a charge from a specified list of offenses or that include a Firearm Weapon. This list of specified offenses is attached to this report as a supplemental list.

The AOC Court Designated Workers Case Management System (CDWCMS), the case management and information system used by Court Designated Workers, was queried for:

- Any complaints containing at least one (1) of the specified offenses from the supplemental list of offenses in the report definitions section during the requested timeframe
or
- Any complaints containing a Firearm Weapon (Pistol, Rifle or Shotgun) as identified by CDW CMS and containing **none** of the charges from the specified list of offenses during the requested timeframe.

These original complaints were then reviewed to determine if any subsequent complaint was filed within 365 days of the original complaint filing date against the same youth. Recidivism is reported as the percentage of original complaints followed by a subsequent against the same youth within 365 days.

Please note that the statistics provided herein are based on data collected from only the CDWCMS database which captures offense data for individuals under the age of 18. The statistics provided do not include any offenses that an individual in this sample may have been charged with as an adult after participating in diversion.

Please also note that the CDW weapon flag indicates the presence of a weapon associated with the offense(s) alleged by the complaint, but does not necessarily indicate that a weapon was discharged or used in the commission of the alleged offense.

RECIDIVISM STATISTICS FOR COMPLAINTS WITH SPECIFIED OFFENSES OR WITH FIREARM WEAPON IDENTIFIED IN CDW CMS FILED JANUARY 1, 2014 – DECEMBER 31, 2022, STATEWIDE

Statistical Report (24_CDW7008)

The report consists of eighteen (18) pages, with nine consecutive pairs of pages each including a line graph and cross-tabulation.

Within each line chart, each line presents the recidivism percentage of original complaints, with lines of separate colors representing the Close Reason group of the Original Complaint. The thickness of the lines represents the associated count of Original Complaints. The labels on the line charts present recidivism as the percentage of the Original Complaints with a subsequent complaint filed against the same youth within 365 days of the filing date of the Original Complaint. The years on the chart's X-axis are the year of Complaint Filing Date.

The second page of each pair displays the same content as the charts on the first page of each pair in a tabular format.

Pages 1-2: Overall Specified Recidivism Statistics by Complaint Close Reason

-Complaints Including at Least One of the Listed Violent Offenses OR with Firearm Weapon Identified in CDW CMS-

This pair of pages includes recidivism rates for all reported complaints – those with at least one of the listed violent offenses *OR* with a Firearm Weapon identified in CDW CMS.

Pages 3-4: Specified Violent Offenses Recidivism Statistics by Complaint Close Reason

-Complaints Including at Least One of the Listed Violent Offenses-

The second pair of pages includes recidivism rates for complaints including any of the listed violent offenses, with or without a Firearm Weapon identified in CDW CMS.

Pages 5-6: All Firearm Complaints Recidivism Statistics by Complaint Close Reason

-Complaints with a Firearm Weapon Identified in CDW CMS, with or without Listed Violent Offense-

The third pair of pages includes recidivism rates for all complaints with a Firearm Weapon (Pistol, Rifle or Shotgun) identified in CDW CMS, with or without any charges of the listed violent offenses.

Pages 7-16 contain a more detailed series of charts and crosstabs related to specific types of offenses from the Listed Violent Offenses. The reported complaints are those in which the Original Complaint has at least one charge of the type of offense indicated. These pages present different recidivism rates for those complaints with and without a Firearm Weapon identified in CDW CMS as well as the Original Complaint's Close Reason group.

- Pages 7-8: Assault 1st Degree
- Pages 9-10: Assault 2nd Degree
- Pages 11-12: Burglary 1st Degree
- Pages 13-14: Robbery 1st Degree
- 15-16: KRS Chapter 507

Pages 17-18: Other Offenses Recidivism Statistics by Complaint Close Reason

RECIDIVISM STATISTICS FOR COMPLAINTS WITH SPECIFIED OFFENSES OR WITH FIREARM WEAPON IDENTIFIED IN CDW CMS FILED JANUARY 1, 2014 – DECEMBER 31, 2022, STATEWIDE

Statistical Report (24_CDW7008)

The last pair of pages presents recidivism rates limited to those complaints including a Firearm Weapon identified in CDW CMS and *NOT* containing charges included among the Listed Violent Offenses.

Statistical Analysis Considerations

- The statistical information presented is a snapshot in time as of report run date (4/1/2024).
- Counts of complaints do not equal a count of youth, since a youth may have multiple complaints.
- The subsequent complaint may be any public or status complaint filed against the same youth within 365 days of the Original Complaint. The subsequent complaint may not necessarily include an identified weapon or charge of a violent offense.
- The identification of a weapon in CDW CMS does not necessarily mean that a weapon was allegedly discharged in the incident associated with the complaint. Weapons are frequently identified as being possessed by the youth without being discharged.
- A complaint must be filed at least one day later than an original complaint to be counted as a subsequent complaint / recidivism in this report.

Data Element/Field/Variable Requested

Database	Data Element/Field/Variable	Description/Definition
CDW CMS	Calendar Year	The Calendar Year begins January 1 and ends on December 31st. This report covers Calendar Years 2014 – 2022.
	Recidivism	Instances in which an original complaint is followed by the filing of a subsequent complaint against the same youth between 1 day and 365 days after the filing date of the original complaint filing date are identified as recidivism in this report.
	Original Complaint	In the evaluation of recidivism, the original complaint is the complaint tested for recidivism within 365 days of its filing date. All CDW complaints are evaluated for recidivism in this report – the analysis is not limited to a youth's first complaint.
	Complaint Filing Date	The date a complaint was filed with the Court Designated Work program. Complaint filing date is reported by Fiscal Year (July 1 through June 30).
	Complaints	The number of distinct complaints filed with the Court Designated Workers program. A single complaint may include one or more charges, and more than one

**RECIDIVISM STATISTICS FOR COMPLAINTS WITH SPECIFIED OFFENSES
OR WITH FIREARM WEAPON IDENTIFIED IN CDW CMS FILED JANUARY
1, 2014 – DECEMBER 31, 2022, STATEWIDE**

Data Element/Field/Variable Requested		
Database	Data Element/Field/Variable	Description/Definition
		complaint may be filed against the same youth during a given period of time.
	Recidivism Complaints	The number of Original Complaints in which the recidivism requirements are met.
	Percent of Complaints / Recidivism Rate	The percentage of a reported group of Original Complaints that were followed by recidivism as defined above.
	Firearm Weapon	An indicator describing whether the Original Complaint indicated a firearm weapon was involved as identified by CDW CMS. Weapons identified as firearms are Pistol, Rifle or Shotgun. The presence of a weapon flag in a CDW Complaint means a weapon was present, but does not mean the weapon was alleged to have been discharged or used in the commission of the alleged offense.
	Close Reason Group	<p>The close reason of the Original Complaint, grouped into the following categories.</p> <ul style="list-style-type: none"> • Formal Court Referral <ul style="list-style-type: none"> ○ CDW Ref Case to Formal Proc ○ Child FTA For P.I. Interview ○ Child Req Formal Court Hearing ○ Formal Court Ref – Co Atty Req ○ Formal Court Ref – Judge Req ○ Informal Adjustment Unsuccessful ○ Unsuccessful Diversion • Youthful Offender Referral <ul style="list-style-type: none"> ○ Youthful Offender Referral • Successful Diversion <ul style="list-style-type: none"> ○ Successful Diversion • Other <ul style="list-style-type: none"> ○ Co Atty Req Inf Proc/Dismiss ○ Court Generated Charge ○ Informal Adjustment Successful ○ No Probable Cause ○ No Reasonable Grounds
	Listed Violent Offense	The supplemental list attached to this report includes all offenses associated with the categories of violent offenses specified by the requestor. The list identifies offenses by Kentucky Revised Statutes (KRS), Uniform Offense Reporting (UOR) Code, the Offense

RECIDIVISM STATISTICS FOR COMPLAINTS WITH SPECIFIED OFFENSES OR WITH FIREARM WEAPON IDENTIFIED IN CDW CMS FILED JANUARY 1, 2014 – DECEMBER 31, 2022, STATEWIDE

Data Element/Field/Variable Requested		
Database	Data Element/Field/Variable	Description/Definition
		Description associated with each UOR Code, and the penalty Level and Class associated with each offense.

Disclaimer Associated with KCOJ/AOC Database(s) and Element(s)

RESEARCH AND STATISTICS DISCLAIMER for CDWCMS REQUESTS

The data from this report is provided from the Court Designated Worker program. Information received from the Court Designated Worker Program electronic case management system (CDWCMS) is subject to change(s), reprogramming, modification(s) of format and availability at the direction of the Administrative Office of the Courts (AOC), and may not at any particular moment reflect the true status of court cases due to ordinary limitation(s), delay(s) or error(s) in the system's operation.

RESEARCH AND STATISTICS UOR CODE DISCLAIMER

The Kentucky State Police (KSP) assigns the Kentucky Uniform Crime Reporting Codes (UOR Codes) to criminal offenses in the Commonwealth of Kentucky. The KSP official list of UOR Codes by KRS number and descriptor can be obtained at the KSP's website at www.kentuckystatepolice.org.

The AOC assigns and maintains codes that are used within the Court of Justice Case Management System for statistical and reporting purposes. These codes are used to identify local and city ordinances, as well as codes for general administrative purposes. The AOC official list of UOR Codes with KRS number and descriptor can be obtained at the Court of Justice Website at courts.ky.gov/aoc/statisticalreports. The AOC UOR Code Listing is for informational purposes only and the information is subject to change, reprogramming, modifications of format, and availability at the direction of the Administrative Office of the Courts (AOC).

A query for data based on specified charges will include each UOR code specified and possible supplemental codes. Supplemental codes (or "ASCF" codes) to any UOR code include: 1) attempt, 2) solicitation, 3) conspiracy, 4) facilitation, 5) complicity, and 6) enhancement. In total, UOR codes contain seven digits. The first six digits are specific to that charge. The seventh digit indicates if there is a supplemental code. A "0" as the seventh digit means that is the primary UOR code and it does not have a supplemental code. If there are supplemental codes, the "0" will change to a 1, 2, 3, 4, 5, or 6 (the numbering corresponds to the list above). An enhancement does not exist on all UOR codes. When a supplemental code does not appear within a dataset, charge(s) did not occur during this period. The presence of "*obs" within the description of a UOR code indicates an obsolete UOR code. However, the code is still present within the KYCourts/CourtNet database and may still be utilized. Not every UOR code included in the query will have charges associated with it in each calendar year examined. Some cases may contain multiple charges; therefore, charge counts may exceed case counts. The number of cases cannot be inferred as the number of individuals as multiple cases may have the same defendant.

**RECIDIVISM STATISTICS FOR COMPLAINTS WITH SPECIFIED OFFENSES
OR WITH FIREARM WEAPON IDENTIFIED IN CDW CMS FILED JANUARY
1, 2014 – DECEMBER 31, 2022, STATEWIDE**

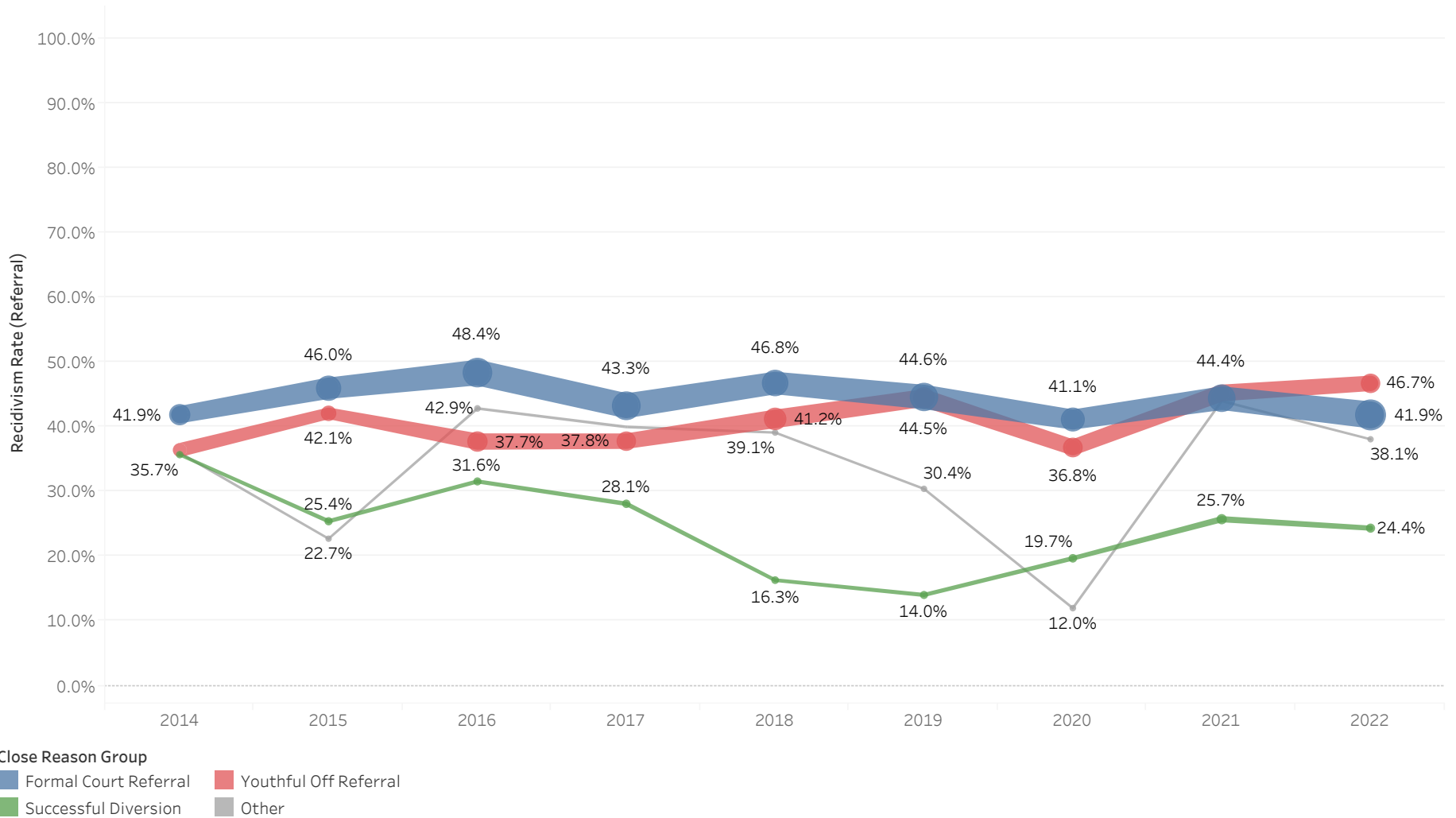
Disclaimer Associated with KCOJ/AOC Database(s) and Element(s)

The AOC disclaims and makes no warranty, express or implied, nor assumes any legal liability or responsibility, for the validity, accuracy, correctness, or completeness of any information that is available and/or obtained through this listing. The recipient is solely responsible for verifying the accuracy of the information received from the official owner of the UOR Codes, the KSP. Furthermore, the AOC shall not be liable to the recipient, the recipient's heirs and assigns, next of kin or to any third party, for any and all claims, demands, losses or damages arising from the usage of this list and/or information contained therein.



ADMINISTRATIVE OFFICE OF THE COURTS
Research and Statistics
Recidivism Statistics for Complaints with Specified Offenses or with
Firearm Weapon Identified in CDW CMS Filed January 1, 2014 - December 31, 2022 Statewide

Total Specified Recidivism Statistics by Complaint Close Reason
 -Complaints Including at Least One of the Listed Violent Offenses OR with Firearm Weapon Identified in CDW CMS-



Close Reason Group
 ■ Formal Court Referral ■ Youthful Off Referral
 ■ Successful Diversion ■ Other

Statistical Analysis Considerations

* Data provided from the Court Designated Workers Case Management System (CDW CMS) Database.
 * Recidivism percentage and counts reflect complaints. A complaint may contain one or more charges and a single youth may have multiple complaints within a period of time.



ADMINISTRATIVE OFFICE OF THE COURTS
Research and Statistics
Recidivism Statistics for Complaints with Specified Offenses or with
Firearm Weapon Identified in CDW CMS Filed January 1, 2014 - December 31, 2022 Statewide

Total Specified Recidivism Statistics by Complaint Close Reason

-Complaints Including at Least One of the Listed Violent Offenses OR with Firearm Weapon Identified in CDW CMS-

Close Reason Group		2014	2015	2016	2017	2018	2019	2020	2021	2022	Grand Total
Formal Court Referral	Total Complaints	327	411	500	483	436	475	384	459	528	4,003
	Recidivism Complaints	137	189	242	209	204	212	158	204	221	1,776
	Recidivism Rate	41.9%	46.0%	48.4%	43.3%	46.8%	44.6%	41.1%	44.4%	41.9%	44.4%
Successful Diversion	Total Complaints	42	59	57	64	49	57	66	101	78	573
	Recidivism Complaints	15	15	18	18	8	8	13	26	19	140
	Recidivism Rate	35.7%	25.4%	31.6%	28.1%	16.3%	14.0%	19.7%	25.7%	24.4%	24.4%
Youthful Off Referral	Total Complaints	258	209	310	291	354	335	296	316	291	2,660
	Recidivism Complaints	94	88	117	110	146	149	109	143	136	1,092
	Recidivism Rate	36.4%	42.1%	37.7%	37.8%	41.2%	44.5%	36.8%	45.3%	46.7%	41.1%
Other	Total Complaints	25	22	28	30	23	23	25	25	21	222
	Recidivism Complaints	9	5	12	12	9	7	3	11	8	76
	Recidivism Rate	36.0%	22.7%	42.9%	40.0%	39.1%	30.4%	12.0%	44.0%	38.1%	34.2%
Grand Total	Total Complaints	652	701	895	868	862	890	771	901	918	7,458
	Recidivism Complaints	255	297	389	349	367	376	283	384	384	3,084
	Recidivism Rate	39.1%	42.4%	43.5%	40.2%	42.6%	42.2%	36.7%	42.6%	41.8%	41.4%

Statistical Analysis Considerations

* Data provided from the Court Designated Workers Case Management System (CDW CMS) Database.

* Recidivism percentage and counts reflect complaints. A complaint may contain one or more charges and a single youth may have multiple complaints within a period of time.

Run Date:

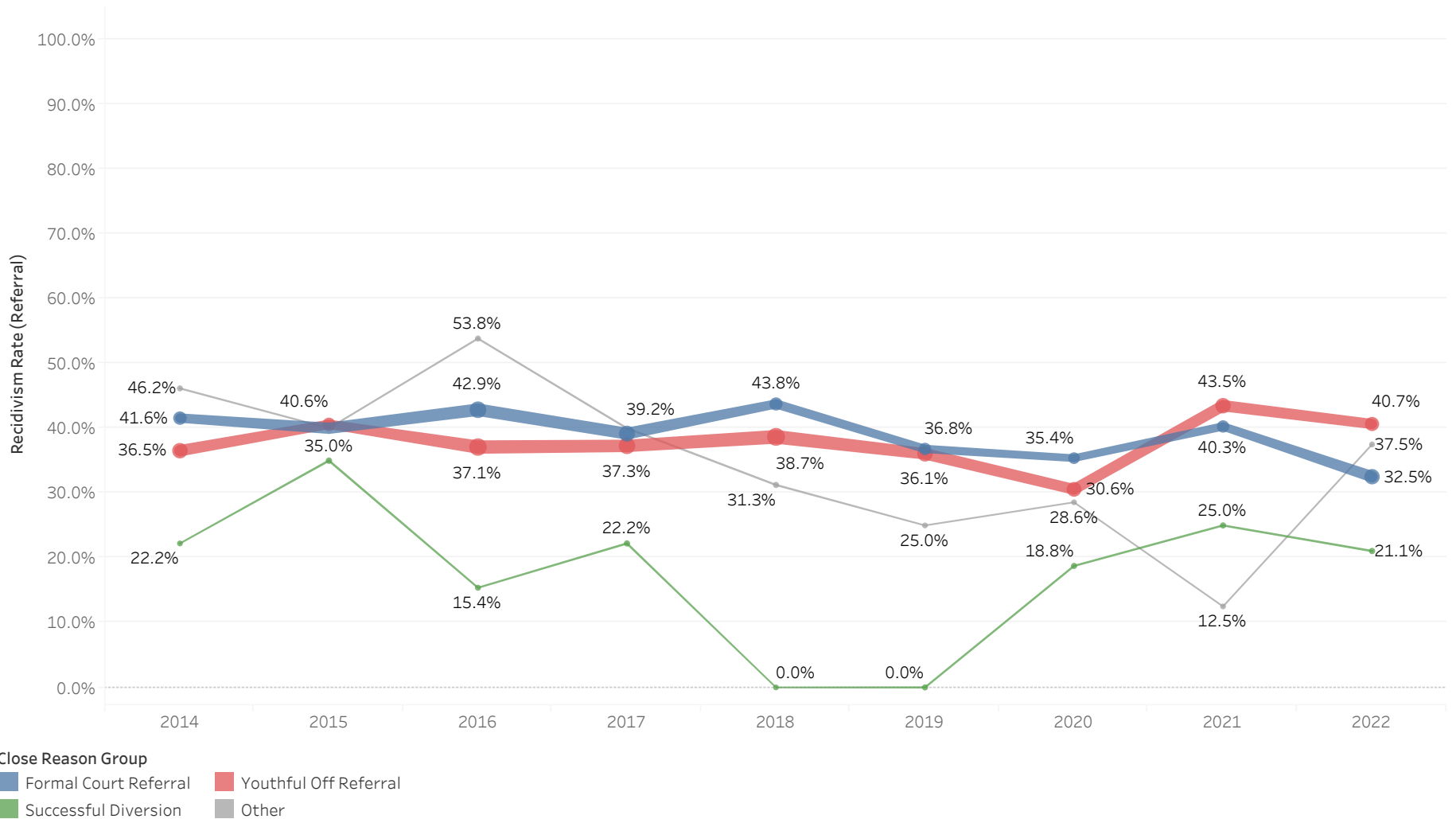
4/1/2024

Page 2 of 18



ADMINISTRATIVE OFFICE OF THE COURTS
Research and Statistics
Recidivism Statistics for Complaints with Specified Offenses or with
Firearm Weapon Identified in CDW CMS Filed January 1, 2014 - December 31, 2022 Statewide

Specified Violent Offenses Recidivism Statistics by Complaint Close Reason
 -Complaints Including at Least One of the Listed Violent Offenses-



Close Reason Group
 ■ Formal Court Referral ■ Youthful Off Referral
 ■ Successful Diversion ■ Other

Statistical Analysis Considerations

* Data provided from the Court Designated Workers Case Management System (CDW CMS) Database.

* Recidivism percentage and counts reflect complaints. A complaint may contain one or more charges and a single youth may have multiple complaints within a period of time.



ADMINISTRATIVE OFFICE OF THE COURTS
Research and Statistics
Recidivism Statistics for Complaints with Specified Offenses or with
Firearm Weapon Identified in CDW CMS Filed January 1, 2014 - December 31, 2022 Statewide

Specified Violent Offenses Recidivism Statistics by Complaint Close Reason
 -Complaints Including at Least One of the Listed Violent Offenses-

Close Reason Group		2014	2015	2016	2017	2018	2019	2020	2021	2022	Grand Total
Formal Court Referral	Total Complaints	166	205	231	217	160	144	130	144	206	1,603
	Recidivism Complaints	69	82	99	85	70	53	46	58	67	629
	Recidivism Rate	41.6%	40.0%	42.9%	39.2%	43.8%	36.8%	35.4%	40.3%	32.5%	39.2%
Successful Diversion	Total Complaints	9	20	13	18	7	15	16	16	19	133
	Recidivism Complaints	2	7	2	4	0	0	3	4	4	26
	Recidivism Rate	22.2%	35.0%	15.4%	22.2%	0.0%	0.0%	18.8%	25.0%	21.1%	19.5%
Youthful Off Referral	Total Complaints	208	165	248	228	256	208	193	207	182	1,895
	Recidivism Complaints	76	67	92	85	99	75	59	90	74	717
	Recidivism Rate	36.5%	40.6%	37.1%	37.3%	38.7%	36.1%	30.6%	43.5%	40.7%	37.8%
Other	Total Complaints	13	10	13	15	16	8	7	8	8	98
	Recidivism Complaints	6	4	7	6	5	2	2	1	3	36
	Recidivism Rate	46.2%	40.0%	53.8%	40.0%	31.3%	25.0%	28.6%	12.5%	37.5%	36.7%
Grand Total	Total Complaints	396	400	505	478	439	375	346	375	415	3,729
	Recidivism Complaints	153	160	200	180	174	130	110	153	148	1,408
	Recidivism Rate	38.6%	40.0%	39.6%	37.7%	39.6%	34.7%	31.8%	40.8%	35.7%	37.8%

Statistical Analysis Considerations

* Data provided from the Court Designated Workers Case Management System (CDW CMS) Database.

* Recidivism percentage and counts reflect complaints. A complaint may contain one or more charges and a single youth may have multiple complaints within a period of time.

Run Date:

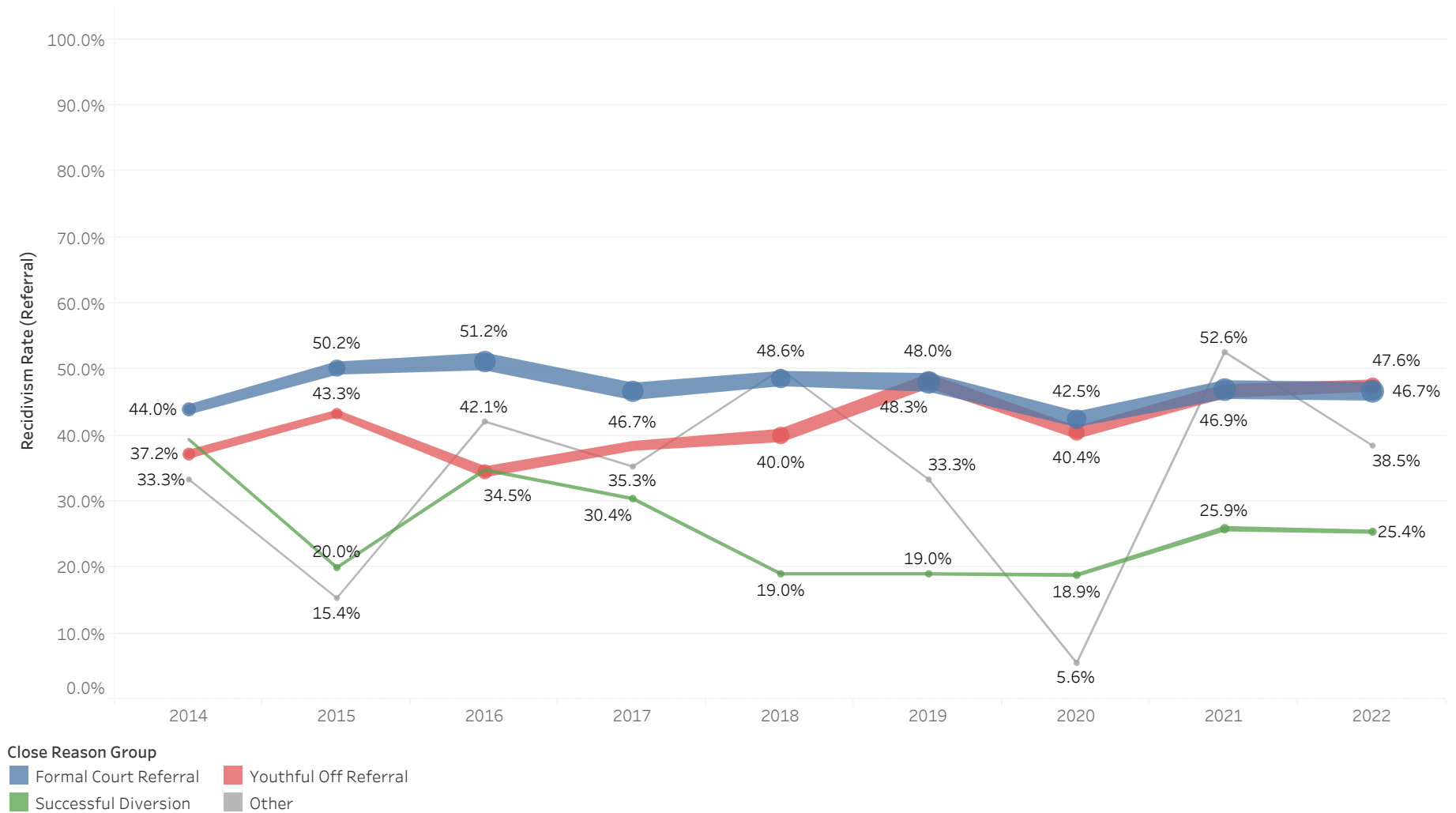
4/1/2024

Page 4 of 18



ADMINISTRATIVE OFFICE OF THE COURTS
Research and Statistics
Recidivism Statistics for Complaints with Specified Offenses or with
Firearm Weapon Identified in CDW CMS Filed January 1, 2014 - December 31, 2022 Statewide

All Firearm Complaints Recidivism Statistics by Complaint Close Reason
 -Complaints with a Firearm Weapon Identified in CDW CMS, with or without Listed Violent Offense-



Close Reason Group
 ■ Formal Court Referral ■ Youthful Off Referral
 ■ Successful Diversion ■ Other

Statistical Analysis Considerations

* Data provided from the Court Designated Workers Case Management System (CDW CMS) Database.
 * Recidivism percentage and counts reflect complaints. A complaint may contain one or more charges and a single youth may have multiple complaints within a period of time.



ADMINISTRATIVE OFFICE OF THE COURTS
Research and Statistics
Recidivism Statistics for Complaints with Specified Offenses or with
Firearm Weapon Identified in CDW CMS Filed January 1, 2014 - December 31, 2022 Statewide

All Firearm Complaints Recidivism Statistics by Complaint Close Reason
 -Complaints with a Firearm Weapon Identified in CDW CMS, with or without Listed Violent Offense-

Close Reason Group		2014	2015	2016	2017	2018	2019	2020	2021	2022	Grand Total
Formal Court Referral	Total Complaints	182	243	334	332	290	358	292	360	364	2,755
	Recidivism Complaints	80	122	171	155	141	172	124	169	170	1,304
	Recidivism Rate	44.0%	50.2%	51.2%	46.7%	48.6%	48.0%	42.5%	46.9%	46.7%	47.3%
Successful Diversion	Total Complaints	33	40	46	46	42	42	53	85	59	446
	Recidivism Complaints	13	8	16	14	8	8	10	22	15	114
	Recidivism Rate	39.4%	20.0%	34.8%	30.4%	19.0%	19.0%	18.9%	25.9%	25.4%	25.6%
Youthful Off Referral	Total Complaints	156	127	200	177	250	261	225	259	225	1,880
	Recidivism Complaints	58	55	69	68	100	126	91	121	107	795
	Recidivism Rate	37.2%	43.3%	34.5%	38.4%	40.0%	48.3%	40.4%	46.7%	47.6%	42.3%
Other	Total Complaints	15	13	19	17	12	15	18	19	13	141
	Recidivism Complaints	5	2	8	6	6	5	1	10	5	48
	Recidivism Rate	33.3%	15.4%	42.1%	35.3%	50.0%	33.3%	5.6%	52.6%	38.5%	34.0%
Grand Total	Total Complaints	386	423	599	572	594	676	588	723	661	5,222
	Recidivism Complaints	156	187	264	243	255	311	226	322	297	2,261
	Recidivism Rate	40.4%	44.2%	44.1%	42.5%	42.9%	46.0%	38.4%	44.5%	44.9%	43.3%

Statistical Analysis Considerations

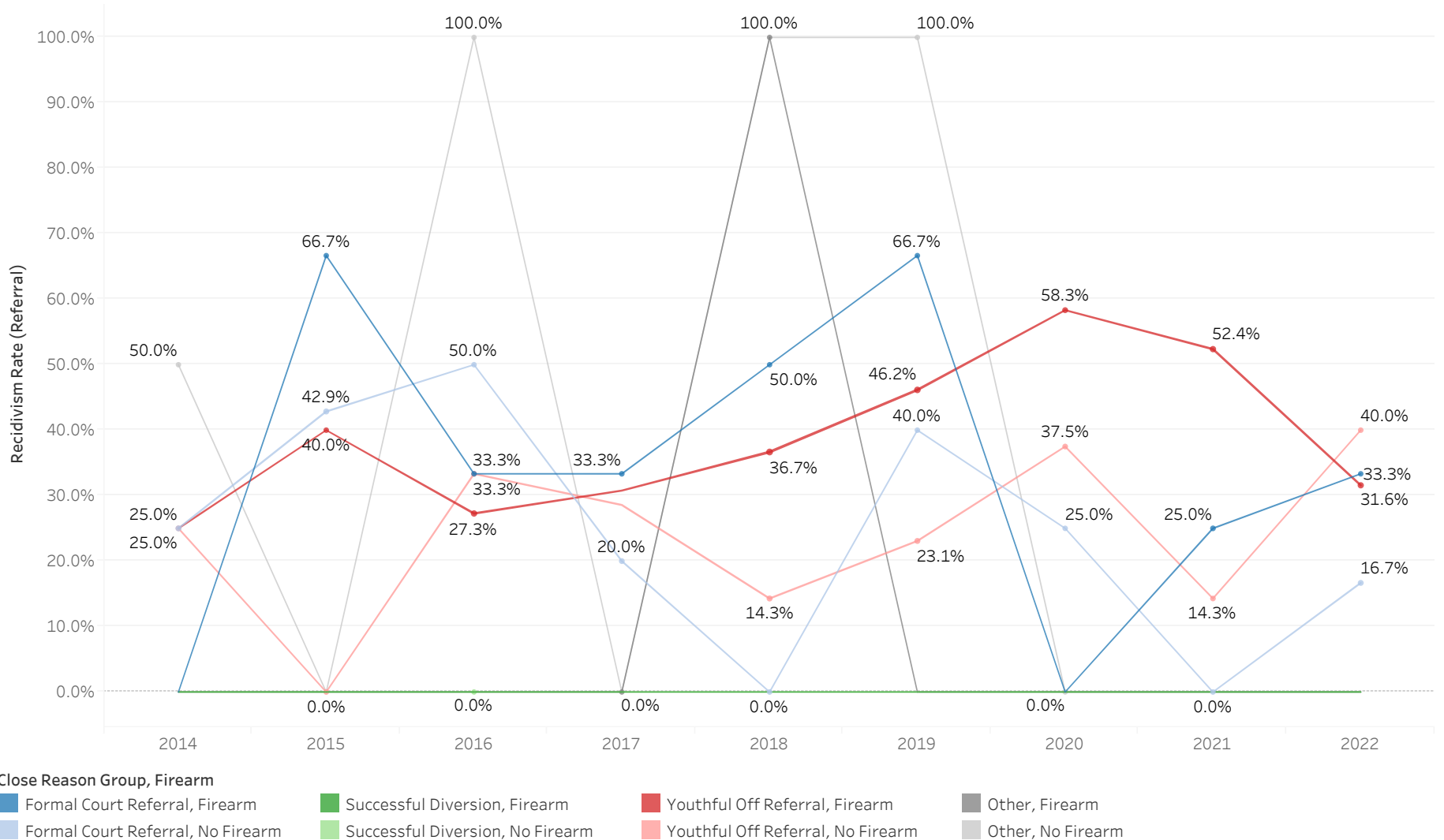
* Data provided from the Court Designated Workers Case Management System (CDW CMS) Database.

* Recidivism percentage and counts reflect complaints. A complaint may contain one or more charges and a single youth may have multiple complaints within a period of time.



ADMINISTRATIVE OFFICE OF THE COURTS
Research and Statistics
Recidivism Statistics for Complaints with Specified Offenses or with
Firearm Weapon Identified in CDW CMS Filed January 1, 2014 - December 31, 2022 Statewide

Assault 1st Degree Recidivism Statistics by Complaint Close Reason



Statistical Analysis Considerations

* Data provided from the Court Designated Workers Case Management System (CDW CMS) Database.

* Recidivism percentage and counts reflect complaints. A complaint may contain one or more charges and a single youth may have multiple complaints within a period of time.



ADMINISTRATIVE OFFICE OF THE COURTS
Research and Statistics
Recidivism Statistics for Complaints with Specified Offenses or with
Firearm Weapon Identified in CDW CMS Filed January 1, 2014 - December 31, 2022 Statewide

Assault 1st Degree Recidivism Statistics by Complaint Close Reason

Close Reason Group	Firearm		2014	2015	2016	2017	2018	2019	2020	2021	2022	Grand Total	
Formal Court Referral	Firearm	Total Complaints		3	3	6	2	3		8	3	28	
		Recidivism Complaints		2	1	2	1	2		2	1	11	
		Recidivism Rate			66.7%	33.3%	33.3%	50.0%	66.7%		25.0%	33.3%	39.3%
	No Firearm	Total Complaints	12	14	4	10	4	5		4	4	12	69
		Recidivism Complaints	3	6	2	2	0	2		1	0	2	18
		Recidivism Rate	25.0%	42.9%	50.0%	20.0%	0.0%	40.0%	25.0%	0.0%	0.0%	16.7%	26.1%
	Total	Total Complaints	12	17	7	16	6	8		4	12	15	97
		Recidivism Complaints	3	8	3	4	1	4		1	2	3	29
		Recidivism Rate	25.0%	47.1%	42.9%	25.0%	16.7%	50.0%	25.0%	16.7%	20.0%	20.0%	29.9%
Successful Diversion	Firearm	Total Complaints		1								1	
		Recidivism Complaints		0									0
		Recidivism Rate		0.0%									0.0%
	No Firearm	Total Complaints		1	1								2
		Recidivism Complaints		0	0								0
		Recidivism Rate		0.0%	0.0%								0.0%
	Total	Total Complaints		2	1								3
		Recidivism Complaints		0	0								0
		Recidivism Rate		0.0%	0.0%								0.0%
Youthful Off Referral	Firearm	Total Complaints	12	5	22	13	30	26	12	21	19	160	
		Recidivism Complaints	3	2	6	4	11	12	7	11	6	62	
		Recidivism Rate	25.0%	40.0%	27.3%	30.8%	36.7%	46.2%	58.3%	52.4%	31.6%	38.8%	
	No Firearm	Total Complaints	8	5	12	14	14	13	8	7	5	86	
		Recidivism Complaints	2	0	4	4	2	3	3	1	2	21	
		Recidivism Rate	25.0%	0.0%	33.3%	28.6%	14.3%	23.1%	37.5%	14.3%	40.0%	24.4%	
	Total	Total Complaints	20	10	34	27	44	39	20	28	24	246	
		Recidivism Complaints	5	2	10	8	13	15	10	12	8	83	
		Recidivism Rate	25.0%	20.0%	29.4%	29.6%	29.5%	38.5%	50.0%	42.9%	33.3%	33.7%	
Other	Firearm	Total Complaints				1	1					2	
		Recidivism Complaints				0	1					1	
		Recidivism Rate				0.0%	100.0%					50.0%	
	No Firearm	Total Complaints	2		1		1	2		1			7
		Recidivism Complaints	1		1		1	2		0			5
		Recidivism Rate	50.0%		100.0%		100.0%	100.0%	0.0%				71.4%
	Total	Total Complaints	2		1	1	2	2		1			9
		Recidivism Complaints	1		1	0	2	2		0			6
		Recidivism Rate	50.0%		100.0%	0.0%	100.0%	100.0%	0.0%				66.7%
Grand Total	Total Complaints	34	29	43	44	52	49	25	40	39	355		
	Recidivism Complaints	9	10	14	12	16	21	11	14	11	118		
	Recidivism Rate	26.5%	34.5%	32.6%	27.3%	30.8%	42.9%	44.0%	35.0%	28.2%	33.2%		

Statistical Analysis Considerations

* Data provided from the Court Designated Workers Case Management System (CDW CMS) Database.

* Recidivism percentage and counts reflect complaints. A complaint may contain one or more charges and a single youth may have multiple complaints within a period of time.

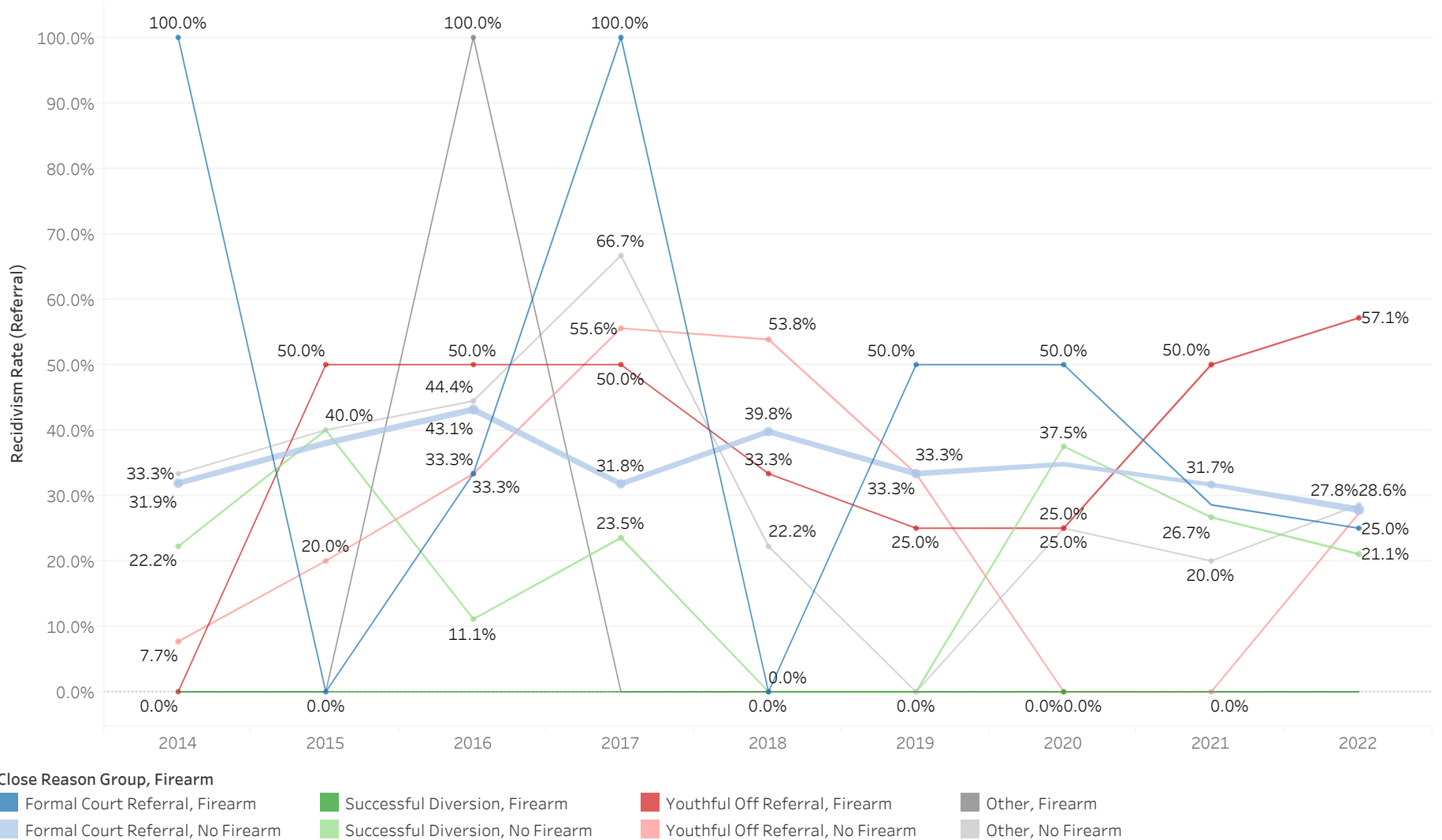
Run Date:

4/1/2024



ADMINISTRATIVE OFFICE OF THE COURTS
Research and Statistics
Recidivism Statistics for Complaints with Specified Offenses or with
Firearm Weapon Identified in CDW CMS Filed January 1, 2014 - December 31, 2022 Statewide

Assault 2nd Degree Recidivism Statistics by Complaint Close Reason



Statistical Analysis Considerations

* Data provided from the Court Designated Workers Case Management System (CDW CMS) Database.

* Recidivism percentage and counts reflect complaints. A complaint may contain one or more charges and a single youth may have multiple complaints within a period of time.



ADMINISTRATIVE OFFICE OF THE COURTS
Research and Statistics
Recidivism Statistics for Complaints with Specified Offenses or with
Firearm Weapon Identified in CDW CMS Filed January 1, 2014 - December 31, 2022 Statewide

Assault 2nd Degree Recidivism Statistics by Complaint Close Reason

Close Reason Group	Firearm		2014	2015	2016	2017	2018	2019	2020	2021	2022	Grand Total	
Formal Court Referral	Firearm	Total Complaints	2	2	3	3	1	2	2	7	4	26	
		Recidivism Complaints	2	0	1	3	0	1	1	2	1	11	
		Recidivism Rate	100.0%	0.0%	33.3%	100.0%	0.0%	50.0%	50.0%	28.6%	25.0%	42.3%	
	No Firearm	Total Complaints	91	100	102	85	88	93	69	60	60	115	803
		Recidivism Complaints	29	38	44	27	35	31	24	19	19	32	279
		Recidivism Rate	31.9%	38.0%	43.1%	31.8%	39.8%	33.3%	34.8%	31.7%	27.8%	27.8%	34.7%
	Total	Total Complaints	93	102	105	88	89	95	71	67	67	119	829
		Recidivism Complaints	31	38	45	30	35	32	25	21	21	33	290
		Recidivism Rate	33.3%	37.3%	42.9%	34.1%	39.3%	33.7%	35.2%	31.3%	27.7%	27.7%	35.0%
Successful Diversion	Firearm	Total Complaints							1			1	
		Recidivism Complaints							0			0	
		Recidivism Rate							0.0%				0.0%
	No Firearm	Total Complaints	9	15	9	17	7	15	8	15	15	19	114
		Recidivism Complaints	2	6	1	4	0	0	3	4	4	4	24
		Recidivism Rate	22.2%	40.0%	11.1%	23.5%	0.0%	0.0%	37.5%	26.7%	21.1%	21.1%	21.1%
	Total	Total Complaints	9	15	9	17	7	15	9	15	15	19	115
		Recidivism Complaints	2	6	1	4	0	0	3	4	4	4	24
		Recidivism Rate	22.2%	40.0%	11.1%	23.5%	0.0%	0.0%	33.3%	26.7%	21.1%	21.1%	20.9%
Youthful Off Referral	Firearm	Total Complaints	2	2	2	2	3	4	8	10	7	40	
		Recidivism Complaints	0	1	1	1	1	1	2	5	4	16	
		Recidivism Rate	0.0%	50.0%	50.0%	50.0%	33.3%	25.0%	25.0%	50.0%	57.1%	40.0%	
	No Firearm	Total Complaints	13	5	15	9	13	12	5	6	11	11	89
		Recidivism Complaints	1	1	5	5	7	4	0	0	0	3	26
		Recidivism Rate	7.7%	20.0%	33.3%	55.6%	53.8%	33.3%	0.0%	0.0%	0.0%	27.3%	29.2%
	Total	Total Complaints	15	7	17	11	16	16	13	16	16	18	129
		Recidivism Complaints	1	2	6	6	8	5	2	5	5	7	42
		Recidivism Rate	6.7%	28.6%	35.3%	54.5%	50.0%	31.3%	15.4%	31.3%	31.3%	38.9%	32.6%
Other	Firearm	Total Complaints			1		1					2	
		Recidivism Complaints			1		0					1	
		Recidivism Rate			100.0%		0.0%						50.0%
	No Firearm	Total Complaints	6	5	9	9	9	4	4	5	7	7	58
		Recidivism Complaints	2	2	4	6	2	0	1	1	1	2	20
		Recidivism Rate	33.3%	40.0%	44.4%	66.7%	22.2%	0.0%	25.0%	20.0%	28.6%	28.6%	34.5%
	Total	Total Complaints	6	5	10	9	10	4	4	5	5	7	60
		Recidivism Complaints	2	2	5	6	2	0	1	1	1	2	21
		Recidivism Rate	33.3%	40.0%	50.0%	66.7%	20.0%	0.0%	25.0%	20.0%	28.6%	28.6%	35.0%
Grand Total	Total Complaints	123	129	141	125	122	130	97	103	103	163	1,133	
	Recidivism Complaints	36	48	57	46	45	37	31	31	31	46	377	
	Recidivism Rate	29.3%	37.2%	40.4%	36.8%	36.9%	28.5%	32.0%	30.1%	28.2%	28.2%	33.3%	

Statistical Analysis Considerations

* Data provided from the Court Designated Workers Case Management System (CDW CMS) Database.

* Recidivism percentage and counts reflect complaints. A complaint may contain one or more charges and a single youth may have multiple complaints within a period of time.

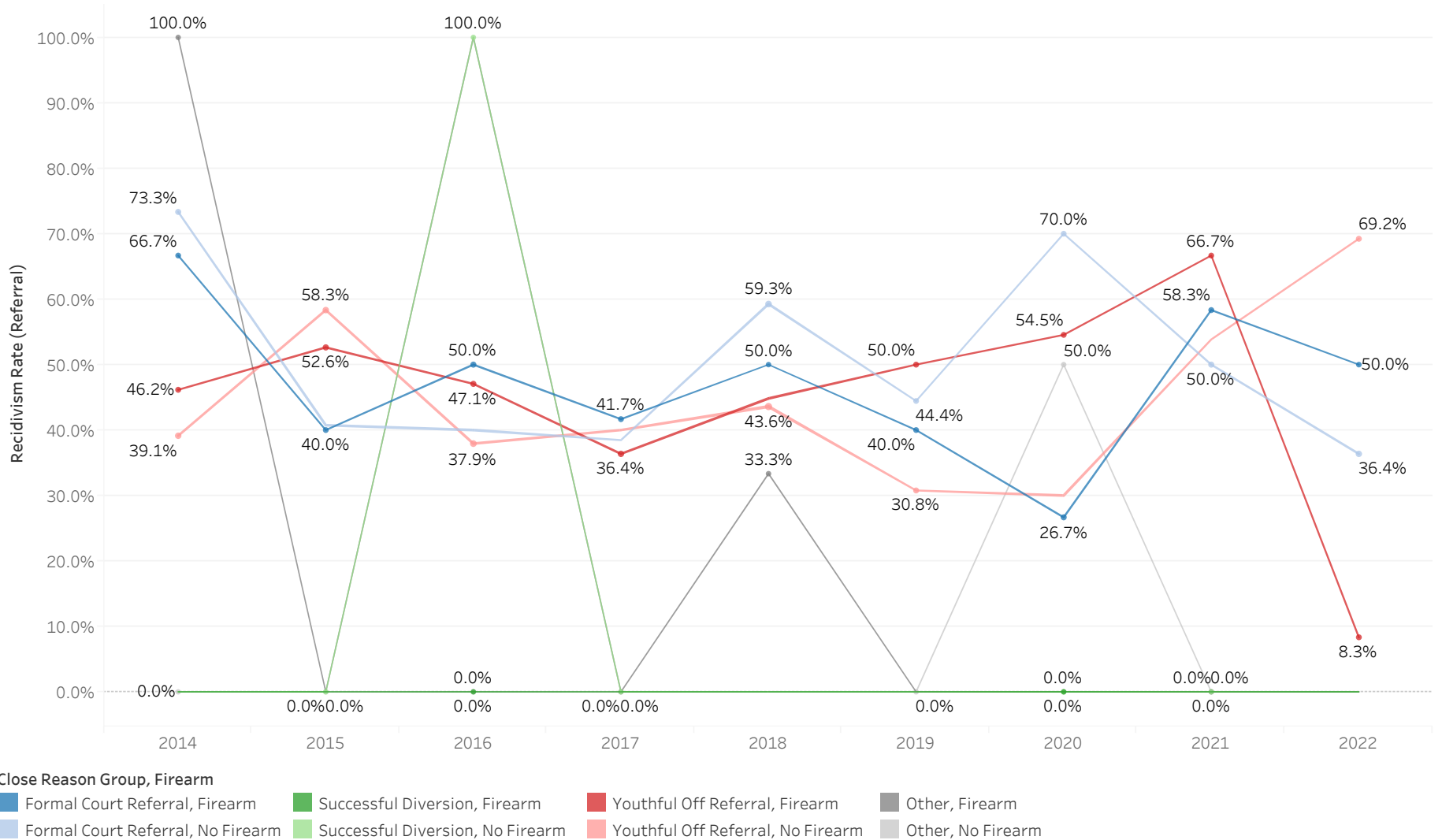
Run Date:

4/1/2024



ADMINISTRATIVE OFFICE OF THE COURTS
Research and Statistics
Recidivism Statistics for Complaints with Specified Offenses or with
Firearm Weapon Identified in CDW CMS Filed January 1, 2014 - December 31, 2022 Statewide

Burglary 1st Degree Recidivism Statistics by Complaint Close Reason



Statistical Analysis Considerations

* Data provided from the Court Designated Workers Case Management System (CDW CMS) Database.

* Recidivism percentage and counts reflect complaints. A complaint may contain one or more charges and a single youth may have multiple complaints within a period of time.

Run Date:

4/1/2024



ADMINISTRATIVE OFFICE OF THE COURTS
Research and Statistics
Recidivism Statistics for Complaints with Specified Offenses or with
Firearm Weapon Identified in CDW CMS Filed January 1, 2014 - December 31, 2022 Statewide

Burglary 1st Degree Recidivism Statistics by Complaint Close Reason

Close Reason Group	Firearm		2014	2015	2016	2017	2018	2019	2020	2021	2022	Grand Total	
Formal Court Referral	Firearm	Total Complaints	9	10	16	12	2	10	15	12	6	92	
		Recidivism Complaints	6	4	8	5	1	4	4	7	3	42	
		Recidivism Rate	66.7%	40.0%	50.0%	41.7%	50.0%	40.0%	26.7%	58.3%	50.0%	45.7%	
	No Firearm	Total Complaints	15	27	30	13	27	9	10	16	22	169	
		Recidivism Complaints	11	11	12	5	16	4	7	8	8	82	
		Recidivism Rate	73.3%	40.7%	40.0%	38.5%	59.3%	44.4%	70.0%	50.0%	36.4%	48.5%	
	Total	Total Complaints	24	37	46	25	29	19	25	28	27	260	
		Recidivism Complaints	17	15	20	10	17	8	11	15	11	124	
		Recidivism Rate	70.8%	40.5%	43.5%	40.0%	58.6%	42.1%	44.0%	53.6%	40.7%	47.7%	
Successful Diversion	Firearm	Total Complaints			2				2			4	
		Recidivism Complaints			0				0			0	
		Recidivism Rate			0.0%				0.0%			0.0%	
	No Firearm	Total Complaints		1	1	1			5		1		9
		Recidivism Complaints		0	1	0			0		0		1
		Recidivism Rate		0.0%	100.0%	0.0%			0.0%	0.0%			11.1%
	Total	Total Complaints		1	3	1			7		1		13
		Recidivism Complaints		0	1	0			0		0		1
		Recidivism Rate		0.0%	33.3%	0.0%			0.0%	0.0%			7.7%
Youthful Off Referral	Firearm	Total Complaints	13	19	17	22	29	12	11	9	12	144	
		Recidivism Complaints	6	10	8	8	13	6	6	6	6	64	
		Recidivism Rate	46.2%	52.6%	47.1%	36.4%	44.8%	50.0%	54.5%	66.7%	8.3%	44.4%	
	No Firearm	Total Complaints	23	24	29	25	39	13	30	13	13	209	
		Recidivism Complaints	9	14	11	10	17	4	9	7	9	90	
		Recidivism Rate	39.1%	58.3%	37.9%	40.0%	43.6%	30.8%	30.0%	53.8%	69.2%	43.1%	
	Total	Total Complaints	36	43	46	47	68	25	41	22	25	353	
		Recidivism Complaints	15	24	19	18	30	10	15	13	10	154	
		Recidivism Rate	41.7%	55.8%	41.3%	38.3%	44.1%	40.0%	36.6%	59.1%	40.0%	43.6%	
Other	Firearm	Total Complaints	1		2	1	3			1		8	
		Recidivism Complaints	1		2	0	1			0		4	
		Recidivism Rate	100.0%		100.0%	0.0%	33.3%			0.0%		50.0%	
	No Firearm	Total Complaints	1	2	1	1		2	2	1		10	
		Recidivism Complaints	0	0	0	0		0	1	0		1	
		Recidivism Rate	0.0%	0.0%	0.0%	0.0%		0.0%	50.0%	0.0%		10.0%	
	Total	Total Complaints	2	2	3	2	3	2	2	2	2	18	
		Recidivism Complaints	1	0	2	0	1	0	1	0		5	
		Recidivism Rate	50.0%	0.0%	66.7%	0.0%	33.3%	0.0%	50.0%	0.0%		27.8%	
Grand Total	Total Complaints	62	83	98	75	100	46	75	53	52	644		
	Recidivism Complaints	33	39	42	28	48	18	27	28	21	284		
	Recidivism Rate	53.2%	47.0%	42.9%	37.3%	48.0%	39.1%	36.0%	52.8%	40.4%	44.1%		

Statistical Analysis Considerations

* Data provided from the Court Designated Workers Case Management System (CDW CMS) Database.

* Recidivism percentage and counts reflect complaints. A complaint may contain one or more charges and a single youth may have multiple complaints within a period of time.

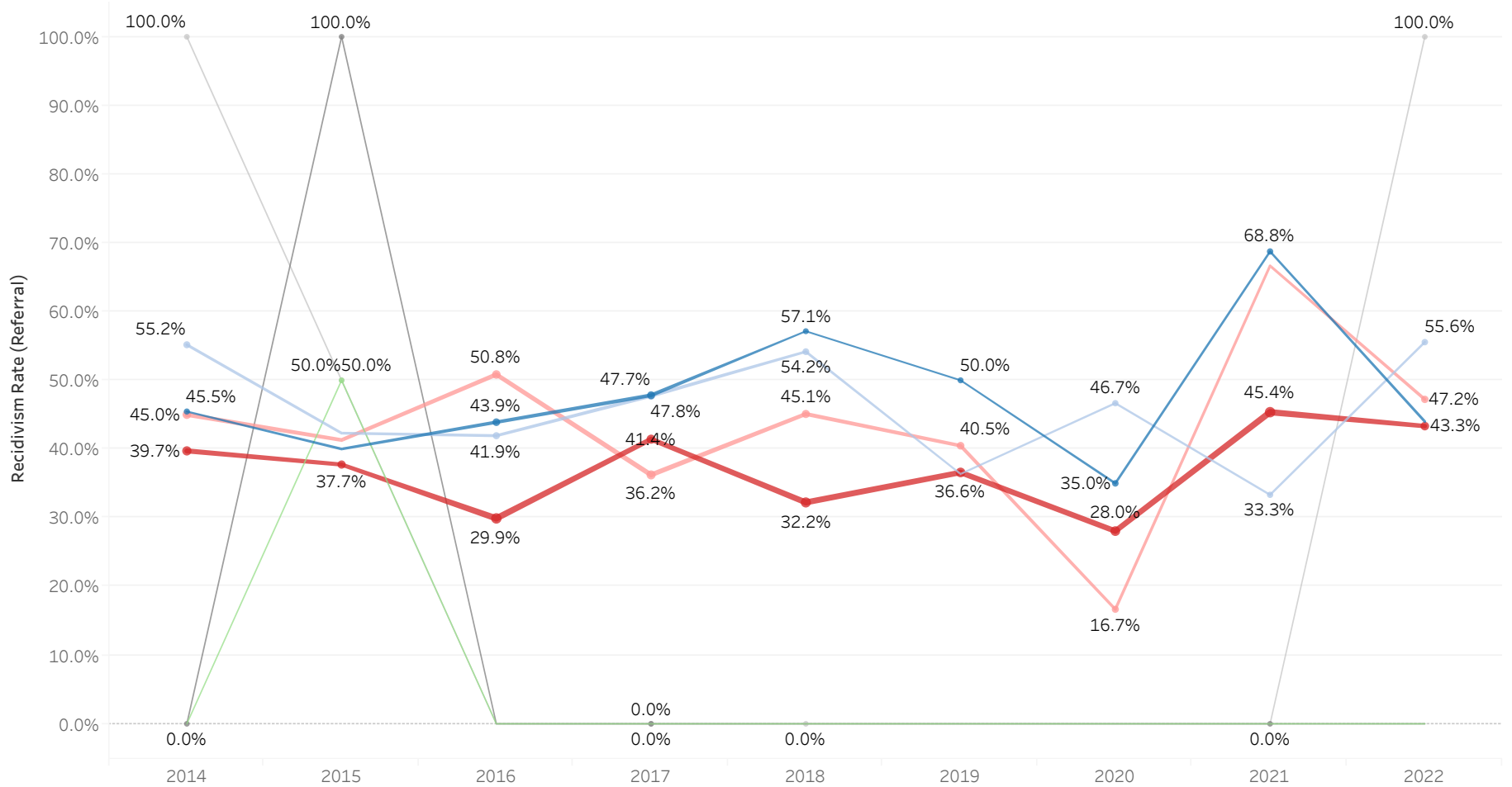
Run Date:

4/1/2024



ADMINISTRATIVE OFFICE OF THE COURTS
Research and Statistics
Recidivism Statistics for Complaints with Specified Offenses or with
Firearm Weapon Identified in CDW CMS Filed January 1, 2014 - December 31, 2022 Statewide

Robbery 1st Degree Recidivism Statistics by Complaint Close Reason



Close Reason Group, Firearm

- Formal Court Referral, Firearm
- Formal Court Referral, No Firearm
- Youthful Off Referral, Firearm
- Youthful Off Referral, No Firearm
- Other, Firearm
- Other, No Firearm
- Successful Diversion, No Firearm

Statistical Analysis Considerations

* Data provided from the Court Designated Workers Case Management System (CDW CMS) Database.

* Recidivism percentage and counts reflect complaints. A complaint may contain one or more charges and a single youth may have multiple complaints within a period of time.

Run Date:

4/1/2024



ADMINISTRATIVE OFFICE OF THE COURTS
Research and Statistics
Recidivism Statistics for Complaints with Specified Offenses or with
Firearm Weapon Identified in CDW CMS Filed January 1, 2014 - December 31, 2022 Statewide

Robbery 1st Degree Recidivism Statistics by Complaint Close Reason

Close Reason Group	Firearm		2014	2015	2016	2017	2018	2019	2020	2021	2022	Grand Total	
Formal Court Referral	Firearm	Total Complaints	11	25	41	46	7	8	20	16	25	199	
		Recidivism Complaints	5	10	18	22	4	4	7	11	11	92	
		Recidivism Rate	45.5%	40.0%	43.9%	47.8%	57.1%	50.0%	35.0%	68.8%	44.0%	46.2%	
	No Firearm	Total Complaints	29	26	31	44	24	11	15	15	15	18	213
		Recidivism Complaints	16	11	13	21	13	4	7	5	5	10	100
		Recidivism Rate	55.2%	42.3%	41.9%	47.7%	54.2%	36.4%	46.7%	33.3%	55.6%	55.6%	46.9%
	Total	Total Complaints	40	51	71	90	31	19	35	35	31	43	411
		Recidivism Complaints	21	21	31	43	17	8	14	16	16	21	192
		Recidivism Rate	52.5%	41.2%	43.7%	47.8%	54.8%	42.1%	40.0%	51.6%	48.8%	48.8%	46.7%
Successful Diversion	No Firearm	Total Complaints		2								2	
		Recidivism Complaints		1									1
		Recidivism Rate		50.0%									50.0%
	Total	Total Complaints		2									2
		Recidivism Complaints		1									1
		Recidivism Rate		50.0%									50.0%
Youthful Off Referral	Firearm	Total Complaints	73	53	97	70	90	82	82	97	60	704	
		Recidivism Complaints	29	20	29	29	29	30	23	44	44	26	259
		Recidivism Rate	39.7%	37.7%	29.9%	41.4%	32.2%	36.6%	28.0%	45.4%	43.3%	43.3%	36.8%
	No Firearm	Total Complaints	60	46	59	69	51	42	30	30	24	36	417
		Recidivism Complaints	27	19	30	25	23	17	5	16	16	17	179
		Recidivism Rate	45.0%	41.3%	50.8%	36.2%	45.1%	40.5%	16.7%	66.7%	66.7%	47.2%	42.9%
	Total	Total Complaints	131	99	155	138	141	124	112	112	121	96	1,117
		Recidivism Complaints	55	39	59	53	52	47	28	60	60	43	436
		Recidivism Rate	42.0%	39.4%	38.1%	38.4%	36.9%	37.9%	25.0%	49.6%	49.6%	44.8%	39.0%
Other	Firearm	Total Complaints	1	1		1				1		4	
		Recidivism Complaints	0	1		0				0			1
		Recidivism Rate	0.0%	100.0%		0.0%				0.0%			25.0%
	No Firearm	Total Complaints	2	2		3	1					1	9
		Recidivism Complaints	2	1		0	0					1	4
		Recidivism Rate	100.0%	50.0%		0.0%	0.0%					100.0%	44.4%
	Total	Total Complaints	3	3		4	1				1	1	13
		Recidivism Complaints	2	2		0	0				0	1	5
		Recidivism Rate	66.7%	66.7%		0.0%	0.0%				0.0%	100.0%	38.5%
Grand Total	Total Complaints	174	155	226	232	173	143	147	147	153	140	1,543	
	Recidivism Complaints	78	63	90	96	69	55	42	76	76	65	634	
	Recidivism Rate	44.8%	40.6%	39.8%	41.4%	39.9%	38.5%	28.6%	49.7%	49.7%	46.4%	41.1%	

Statistical Analysis Considerations

* Data provided from the Court Designated Workers Case Management System (CDW CMS) Database.

* Recidivism percentage and counts reflect complaints. A complaint may contain one or more charges and a single youth may have multiple complaints within a period of time.

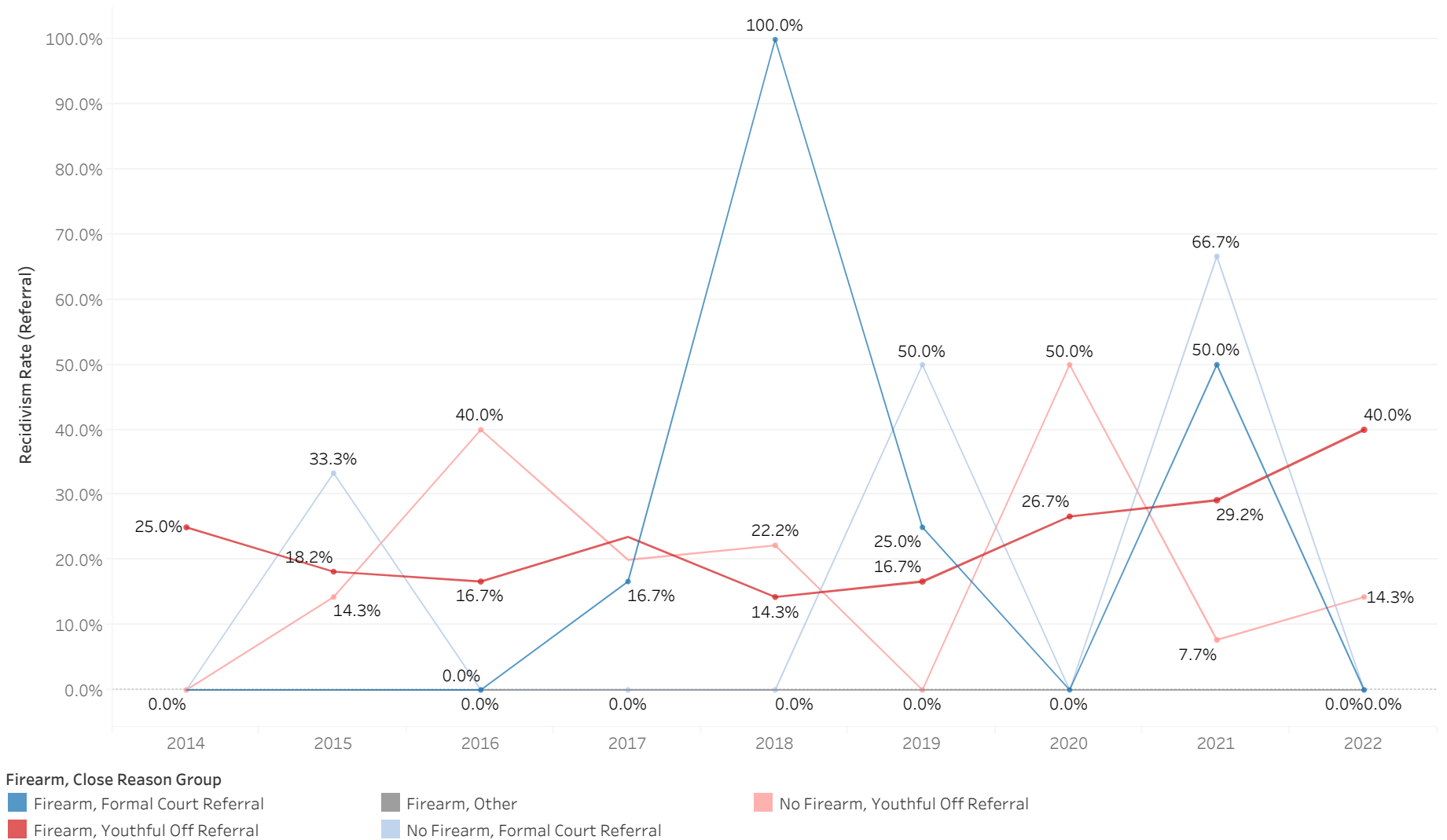
Run Date:

4/1/2024



ADMINISTRATIVE OFFICE OF THE COURTS
Research and Statistics
Recidivism Statistics for Complaints with Specified Offenses or with
Firearm Weapon Identified in CDW CMS Filed January 1, 2014 - December 31, 2022 Statewide

KRS 507 Recidivism Statistics by Complaint Close Reason



Statistical Analysis Considerations

* Data provided from the Court Designated Workers Case Management System (CDW CMS) Database.

* Recidivism percentage and counts reflect complaints. A complaint may contain one or more charges and a single youth may have multiple complaints within a period of time.

Run Date:

4/1/2024



ADMINISTRATIVE OFFICE OF THE COURTS
Research and Statistics
Recidivism Statistics for Complaints with Specified Offenses or with
Firearm Weapon Identified in CDW CMS Filed January 1, 2014 - December 31, 2022 Statewide

KRS 507 Recidivism Statistics by Complaint Close Reason

Close Reason Group	Firearm		2014	2015	2016	2017	2018	2019	2020	2021	2022	Grand Total	
Formal Court Referral	Firearm	Total Complaints			4	6	1	4	1	6	6	28	
		Recidivism Complaints			0	1	1	1	0	3	0	6	
		Recidivism Rate			0.0%	16.7%	100.0%	25.0%	0.0%	50.0%	0.0%	21.4%	
	No Firearm	Total Complaints			3	3	4	6	2	2	6	2	28
		Recidivism Complaints			1	0	0	0	1	0	4	0	6
		Recidivism Rate			33.3%	0.0%	0.0%	0.0%	50.0%	0.0%	66.7%	0.0%	21.4%
	Total	Total Complaints			3	6	10	7	6	3	12	8	55
		Recidivism Complaints			1	0	1	1	2	0	7	0	12
		Recidivism Rate			33.3%	0.0%	10.0%	14.3%	33.3%	0.0%	58.3%	0.0%	21.8%
Youthful Off Referral	Firearm	Total Complaints	16	11	18	17	14	24	15	24	25	164	
		Recidivism Complaints	4	2	3	4	2	4	4	4	7	10	40
		Recidivism Rate	25.0%	18.2%	16.7%	23.5%	14.3%	16.7%	26.7%	29.2%	40.0%	24.4%	
	No Firearm	Total Complaints	8	7	5	15	9	4	4	4	13	7	72
		Recidivism Complaints	0	1	2	3	2	0	2	2	1	1	12
		Recidivism Rate	0.0%	14.3%	40.0%	20.0%	22.2%	0.0%	50.0%	7.7%	14.3%	16.7%	
	Total	Total Complaints	24	18	23	32	23	28	19	19	37	32	236
		Recidivism Complaints	4	3	5	7	4	4	6	6	8	11	52
		Recidivism Rate	16.7%	16.7%	21.7%	21.9%	17.4%	14.3%	31.6%	21.6%	34.4%	22.0%	
Other	Firearm	Total Complaints			1							1	
		Recidivism Complaints			0								0
		Recidivism Rate			0.0%								0.0%
	Total	Total Complaints			1								1
	Recidivism Complaints			0								0	
	Recidivism Rate			0.0%								0.0%	
Grand Total	Total Complaints		24	21	30	42	30	34	22	49	40	292	
	Recidivism Complaints		4	4	5	8	5	6	6	15	11	64	
	Recidivism Rate		16.7%	19.0%	16.7%	19.0%	16.7%	17.6%	27.3%	30.6%	27.5%	21.9%	

Statistical Analysis Considerations

* Data provided from the Court Designated Workers Case Management System (CDW CMS) Database.

* Recidivism percentage and counts reflect complaints. A complaint may contain one or more charges and a single youth may have multiple complaints within a period of time.

Run Date:

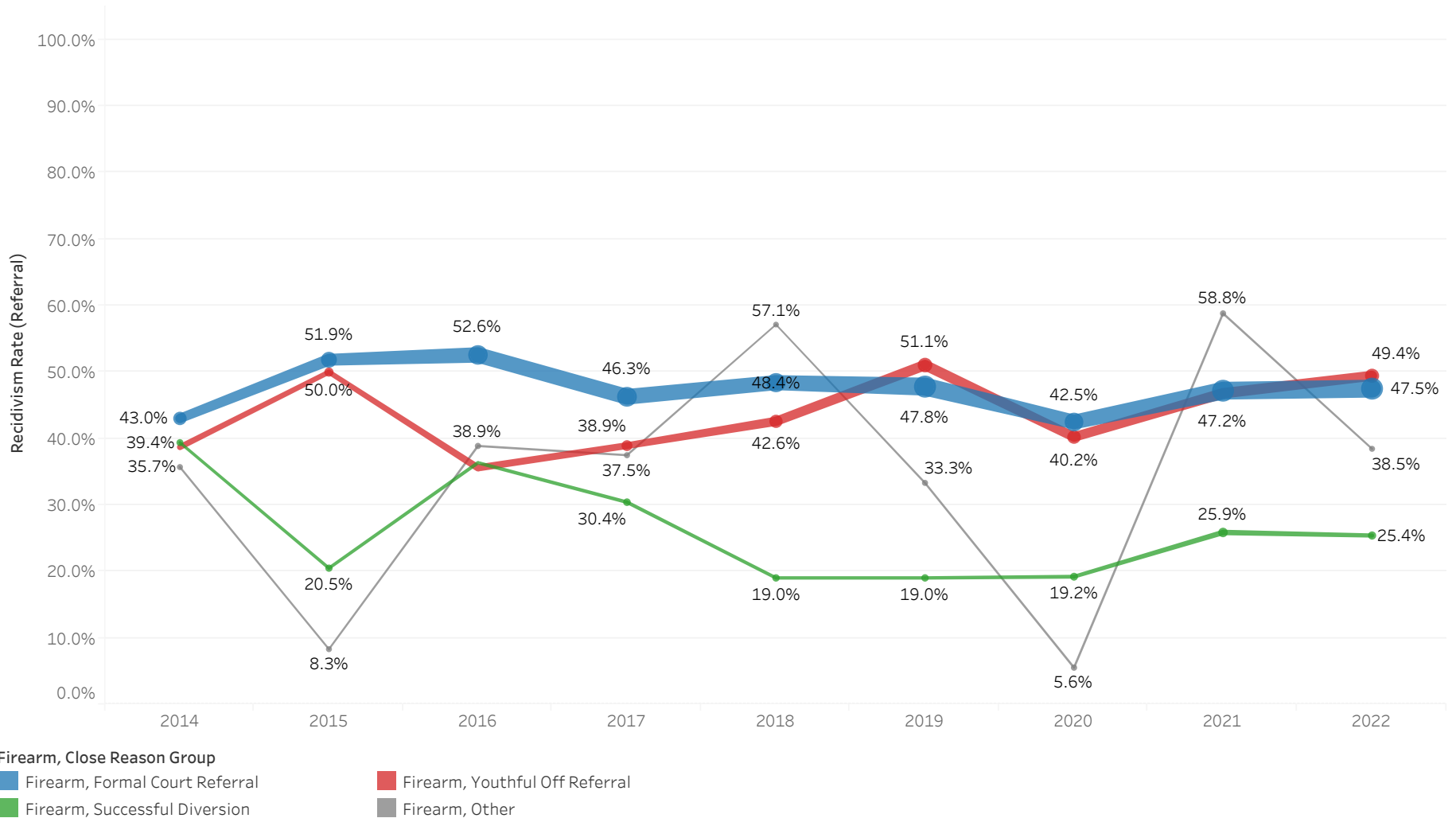
4/1/2024



ADMINISTRATIVE OFFICE OF THE COURTS
Research and Statistics
Recidivism Statistics for Complaints with Specified Offenses or with
Firearm Weapon Identified in CDW CMS Filed January 1, 2014 - December 31, 2022 Statewide

Other Offenses Recidivism Statistics by Complaint Close Reason

-Complaints Including Firearm Weapon Identified in CDW CMS and *NO* Charges of Listed Violent Offenses-



Statistical Analysis Considerations

* Data provided from the Court Designated Workers Case Management System (CDW CMS) Database.

* Recidivism percentage and counts reflect complaints. A complaint may contain one or more charges and a single youth may have multiple complaints within a period of time.

Run Date:

4/1/2024



ADMINISTRATIVE OFFICE OF THE COURTS
Research and Statistics
Recidivism Statistics for Complaints with Specified Offenses or with
Firearm Weapon Identified in CDW CMS Filed January 1, 2014 - December 31, 2022 Statewide

Other Offenses Recidivism Statistics by Complaint Close Reason

-Complaints Including Firearm Weapon Identified in CDW CMS and *NO* Charges of Listed Violent Offenses-

Close Reason Group	Firearm		2014	2015	2016	2017	2018	2019	2020	2021	2022	Grand Total
Formal Court Referral	Firearm	Total Complaints	165	216	291	296	283	343	273	339	341	2,547
		Recidivism Complaints	71	112	153	137	137	164	116	160	162	1,212
		Recidivism Rate	43.0%	51.9%	52.6%	46.3%	48.4%	47.8%	42.5%	47.2%	47.5%	47.6%
	Total	Total Complaints	165	216	291	296	283	343	273	339	341	2,547
		Recidivism Complaints	71	112	153	137	137	164	116	160	162	1,212
		Recidivism Rate	43.0%	51.9%	52.6%	46.3%	48.4%	47.8%	42.5%	47.2%	47.5%	47.6%
Successful Diversion	Firearm	Total Complaints	33	39	44	46	42	42	52	85	59	442
		Recidivism Complaints	13	8	16	14	8	8	10	22	15	114
		Recidivism Rate	39.4%	20.5%	36.4%	30.4%	19.0%	19.0%	19.2%	25.9%	25.4%	25.8%
	Total	Total Complaints	33	39	44	46	42	42	52	85	59	442
		Recidivism Complaints	13	8	16	14	8	8	10	22	15	114
		Recidivism Rate	39.4%	20.5%	36.4%	30.4%	19.0%	19.0%	19.2%	25.9%	25.4%	25.8%
Youthful Off Referral	Firearm	Total Complaints	93	78	118	113	162	190	169	188	180	1,291
		Recidivism Complaints	36	39	42	44	69	97	68	88	89	572
		Recidivism Rate	38.7%	50.0%	35.6%	38.9%	42.6%	51.1%	40.2%	46.8%	49.4%	44.3%
	Total	Total Complaints	93	78	118	113	162	190	169	188	180	1,291
		Recidivism Complaints	36	39	42	44	69	97	68	88	89	572
		Recidivism Rate	38.7%	50.0%	35.6%	38.9%	42.6%	51.1%	40.2%	46.8%	49.4%	44.3%
Other	Firearm	Total Complaints	14	12	18	16	7	15	18	17	13	130
		Recidivism Complaints	5	1	7	6	4	5	1	10	5	44
		Recidivism Rate	35.7%	8.3%	38.9%	37.5%	57.1%	33.3%	5.6%	58.8%	38.5%	33.8%
	Total	Total Complaints	14	12	18	16	7	15	18	17	13	130
		Recidivism Complaints	5	1	7	6	4	5	1	10	5	44
		Recidivism Rate	35.7%	8.3%	38.9%	37.5%	57.1%	33.3%	5.6%	58.8%	38.5%	33.8%
Grand Total	Total Complaints	305	345	471	471	494	590	512	629	593	4,410	
	Recidivism Complaints	125	160	218	201	218	274	195	280	271	1,942	
	Recidivism Rate	41.0%	46.4%	46.3%	42.7%	44.1%	46.4%	38.1%	44.5%	45.7%	44.0%	

Statistical Analysis Considerations

* Data provided from the Court Designated Workers Case Management System (CDW CMS) Database.

* Recidivism percentage and counts reflect complaints. A complaint may contain one or more charges and a single youth may have multiple complaints within a period of time.

Run Date:

4/1/2024



ADMINISTRATIVE OFFICE OF THE COURTS
Research & Statistics

21_RSX7000

The UOR Codes listed below were queried for the attached report

Assault 1st Degree

KRS	UOR Code	UOR Description	CHARGE LEVEL AND CLASS
508.010	0130000	*OBS* ASSAULT - 1ST DEGREE	Felony B
508.010	0130001	*OBS* ATT ASSAULT - 1ST DEGREE	Felony C
508.010	0130002	*OBS* SOLC ASSAULT - 1ST DEGREE	Felony C
508.010	0130003	*OBS* CONS ASSAULT - 1ST DEGREE	Felony C
508.010	0130004	*OBS* FACL ASSAULT - 1ST DEGREE	Felony D
508.010	0130005	*OBS* COMP ASSAULT - 1ST DEGREE	Felony B
508.010	0130110	*OBS* ASSAULT-1ST DEGREE-FAMILY-GUN	Felony B
508.010	0130111	*OBS* ATT ASSAULT-1ST DEGREE-FAMILY-GUN	Felony C
508.010	0130112	*OBS* SOLC ASSAULT-1ST DEGREE-FAMILY-GUN	Felony C
508.010	0130113	*OBS* CONS ASSAULT-1ST DEGREE-FAMILY-GUN	Felony C
508.010	0130114	*OBS* FACL ASSAULT-1ST DEGREE-FAMILY-GUN	Felony D
508.010	0130115	*OBS* COMP ASSAULT-1ST DEGREE-FAMILY-GUN	Felony B
508.010	0130116	*OBS* ENH ASSAULT-1ST DEGREE-FAMILY-GUN	Felony A
508.010	0130130	*OBS* ASSAULT 1ST SPOUSE ABUSE	Felony B
508.010	0130131	*OBS* ATT ASSAULT 1ST SPOUSE ABUSE	Felony C
508.010	0130132	*OBS* SOLC ASSAULT 1ST SPOUSE ABUSE	Felony C
508.010	0130133	*OBS* CONS ASSAULT 1ST SPOUSE ABUSE	Felony C
508.010	0130134	*OBS* FACL ASSAULT 1ST SPOUSE ABUSE	Felony D
508.010	0130135	*OBS* COMP ASSAULT 1ST SPOUSE ABUSE	Felony B
508.010	0130150	*OBS* ASSAULT 1ST DEGREE DOMESTIC VIOLENCE	Felony B
508.010	0130151	*OBS* ATT ASSAULT 1ST DEGREE DOMESTIC VIOLENCE	Felony C
508.010	0130152	*OBS* SOLC ASSAULT 1ST DEGREE DOMESTIC VIOLENCE	Felony C
508.010	0130153	*OBS* CONS ASSAULT 1ST DEGREE DOMESTIC VIOLENCE	Felony C
508.010	0130154	*OBS* FACL ASSAULT 1ST DEGREE DOMESTIC VIOLENCE	Felony D
508.010	0130155	*OBS* COMP ASSAULT 1ST DEGREE DOMESTIC VIOLENCE	Felony B
508.010	0130210	*OBS* ASSAULT-1ST DEGREE -FAMILY-IDENTIFY WEAPON	Felony B
508.010	0130211	*OBS* ATT ASSAULT-1ST DEGREE -FAMILY-IDENTIFY WEAPON	Felony C
508.010	0130212	*OBS* SOLC ASSAULT-1ST DEGREE -FAMILY-IDENTIFY WEAPON	Felony C
508.010	0130213	*OBS* CONS ASSAULT-1ST DEGREE -FAMILY-IDENTIFY WEAPON	Felony C
508.010	0130214	*OBS* FACL ASSAULT-1ST DEGREE -FAMILY-IDENTIFY WEAPON	Felony D
508.010	0130215	*OBS* COMP ASSAULT-1ST DEGREE -FAMILY-IDENTIFY WEAPON	Felony B
508.010	0130230	*OBS* ASSAULT-1ST DEGREE-CHILD ABUSE	Felony B

Statistical Analysis Considerations:

This charge list displays base level offenses as well as the inchoate variants

Assault 1st Degree

KRS	UOR Code	UOR Description	CHARGE LEVEL AND CLASS
508.010	0130231	*OBS* ATT ASSAULT-1ST DEGREE-CHILD ABUSE	Felony C
508.010	0130232	*OBS* SOLC ASSAULT-1ST DEGREE-CHILD ABUSE	Felony C
508.010	0130233	*OBS* CONS ASSAULT-1ST DEGREE-CHILD ABUSE	Felony C
508.010	0130234	*OBS* FACL ASSAULT-1ST DEGREE-CHILD ABUSE	Felony D
508.010	0130235	*OBS* COMP ASSAULT-1ST DEGREE-CHILD ABUSE	Felony B
508.010	0130310	*OBS* ASSAULT-1ST DEGREE-FAMILY-STRONGARM	Felony B
508.010	0130311	*OBS* ATT ASSAULT-1ST DEGREE-FAMILY-STRONGARM	Felony C
508.010	0130312	*OBS* SOLC ASSAULT-1ST DEGREE-FAMILY-STRONGARM	Felony C
508.010	0130313	*OBS* CONS ASSAULT-1ST DEGREE-FAMILY-STRONGARM	Felony C
508.010	0130314	*OBS* FACL ASSAULT-1ST DEGREE-FAMILY-STRONGARM	Felony D
508.010	0130315	*OBS* COMP ASSAULT-1ST DEGREE-FAMILY-STRONGARM	Felony B
508.010	0130410	*OBS* ASSAULT-1ST DEGREE-NON-FAMILY-GUN	Felony B
508.010	0130411	*OBS* ATT ASSAULT-1ST DEGREE-NON-FAMILY-GUN	Felony C
508.010	0130412	*OBS* SOLC ASSAULT-1ST DEGREE-NON-FAMILY-GUN	Felony C
508.010	0130413	*OBS* CONS ASSAULT-1ST DEGREE-NON-FAMILY-GUN	Felony C
508.010	0130414	*OBS* FACL ASSAULT-1ST DEGREE-NON-FAMILY-GUN	Felony D
508.010	0130415	*OBS* COMP ASSAULT-1ST DEGREE-NON-FAMILY-GUN	Felony B
508.010	0130510	*OBS* ASSAULT-1ST DEGREE NON-FAMILY-IDENTIFY WEAPON	Felony B
508.010	0130511	*OBS* ATT ASSAULT-1ST DEGREE NON-FAMILY-IDENTIFY WEAPON	Felony C
508.010	0130512	*OBS* SOLC ASSAULT-1ST DEGREE NON-FAMILY-IDENTIFY WEAPON	Felony C
508.010	0130513	*OBS* CONS ASSAULT-1ST DEGREE NON-FAMILY-IDENTIFY WEAPON	Felony C
508.010	0130514	*OBS* FACL ASSAULT-1ST DEGREE NON-FAMILY-IDENTIFY WEAPON	Felony D
508.010	0130515	*OBS* COMP ASSAULT-1ST DEGREE NON-FAMILY-IDENTIFY WEAPON	Felony B
508.010	0130610	*OBS* ASSAULT-1ST DEGREE-NON-FAMILY-STRONGARM	Felony B
508.010	0130611	*OBS* ATT ASSAULT-1ST DEGREE-NON-FAMILY-STRONGARM	Felony C
508.010	0130612	*OBS* SOLC ASSAULT-1ST DEGREE-NON-FAMILY-STRONGARM	Felony C
508.010	0130613	*OBS* CONS ASSAULT-1ST DEGREE-NON-FAMILY-STRONGARM	Felony C
508.010	0130614	*OBS* FACL ASSAULT-1ST DEGREE-NON-FAMILY-STRONGARM	Felony D
508.010	0130615	*OBS* COMP ASSAULT-1ST DEGREE-NON-FAMILY-STRONGARM	Felony B
508.010	0130710	*OBS* ASSAULT-1ST DEGREE-PUBLIC OFFICIAL-GUN	Felony B
508.010	0130711	*OBS* ATT ASSAULT-1ST DEGREE-PUBLIC OFFICIAL-GUN	Felony C
508.010	0130712	*OBS* SOLC ASSAULT-1ST DEGREE-PUBLIC OFFICIAL-GUN	Felony C
508.010	0130713	*OBS* CONS ASSAULT-1ST DEGREE-PUBLIC OFFICIAL-GUN	Felony C
508.010	0130714	*OBS* FACL ASSAULT-1ST DEGREE-PUBLIC OFFICIAL-GUN	Felony D
508.010	0130715	*OBS* COMP ASSAULT-1ST DEGREE-PUBLIC OFFICIAL-GUN	Felony B
508.010	0130810	*OBS* ASSAULT-1ST DEGREE-PUBLIC OFFICIAL-IDENTIFY WEAPON	Felony B

Statistical Analysis Considerations:

This charge list displays base level offenses as well as the inchoate variants

Data Source: CourtNet

Query Date: 3/26/2024

Assault 1st Degree

KRS	UOR Code	UOR Description	CHARGE LEVEL AND CLASS
508.010	0130811	*OBS* ATT ASSAULT-1ST DEGREE-PUBLIC OFFICIAL-IDENTIFY WEAPON	Felony C
508.010	0130812	*OBS* SOLC ASSAULT-1ST DEGREE-PUBLIC OFFICIAL-IDENTIFY WEAPON	Felony C
508.010	0130813	*OBS* CONS ASSAULT-1ST DEGREE-PUBLIC OFFICIAL-IDENTIFY WEAPON	Felony C
508.010	0130814	*OBS* FACL ASSAULT-1ST DEGREE-PUBLIC OFFICIAL-IDENTIFY WEAPON	Felony D
508.010	0130815	*OBS* COMP ASSAULT-1ST DEGREE-PUBLIC OFFICIAL-IDENTIFY WEAPON	Felony B
508.010	0130910	*OBS* ASSAULT-1ST DEGREE-PUBLIC OFFICIAL-STRONGARM	Felony B
508.010	0130911	*OBS* ATT ASSAULT-1ST DEGREE-PUBLIC OFFICIAL-STRONGARM	Felony C
508.010	0130912	*OBS* SOLC ASSAULT-1ST DEGREE-PUBLIC OFFICIAL-STRONGARM	Felony C
508.010	0130913	*OBS* CONS ASSAULT-1ST DEGREE-PUBLIC OFFICIAL-STRONGARM	Felony C
508.010	0130914	*OBS* FACL ASSAULT-1ST DEGREE-PUBLIC OFFICIAL-STRONGARM	Felony D
508.010	0130915	*OBS* COMP ASSAULT-1ST DEGREE-PUBLIC OFFICIAL-STRONGARM	Felony B
508.010	0131010	*OBS* ASSAULT-1ST DEGREE-POLICE OFFICER-GUN	Felony B
508.010	0131011	*OBS* ATT ASSAULT-1ST DEGREE-POLICE OFFICER-GUN	Felony C
508.010	0131012	*OBS* SOLC ASSAULT-1ST DEGREE-POLICE OFFICER-GUN	Felony C
508.010	0131013	*OBS* CONS ASSAULT-1ST DEGREE-POLICE OFFICER-GUN	Felony C
508.010	0131014	*OBS* FACL ASSAULT-1ST DEGREE-POLICE OFFICER-GUN	Felony D
508.010	0131015	*OBS* COMP ASSAULT-1ST DEGREE-POLICE OFFICER-GUN	Felony B
508.010	0131110	*OBS* ASSAULT-1ST DEGREE-POLICE OFFICER-IDENTIFY WEAPON	Felony B
508.010	0131111	*OBS* ATT ASSAULT-1ST DEGREE-POLICE OFFICER-IDENTIFY WEAPON	Felony C
508.010	0131112	*OBS* SOLC ASSAULT-1ST DEGREE-POLICE OFFICER-IDENTIFY WEAPON	Felony C
508.010	0131113	*OBS* CONS ASSAULT-1ST DEGREE-POLICE OFFICER-IDENTIFY WEAPON	Felony C
508.010	0131114	*OBS* FACL ASSAULT-1ST DEGREE-POLICE OFFICER-IDENTIFY WEAPON	Felony C
508.010	0131115	*OBS* COMP ASSAULT-1ST DEGREE-POLICE OFFICER-IDENTIFY WEAPON	Felony B
508.010	0131210	*OBS* ASSAULT-1ST DEGREE-POLICE OFFICER-STRONGARM	Felony B
508.010	0131211	*OBS* ATT ASSAULT-1ST DEGREE-POLICE OFFICER-STRONGARM	Felony C
508.010	0131212	*OBS* SOLC ASSAULT-1ST DEGREE-POLICE OFFICER-STRONGARM	Felony C
508.010	0131213	*OBS* CONS ASSAULT-1ST DEGREE-POLICE OFFICER-STRONGARM	Felony C
508.010	0131214	*OBS* FACL ASSAULT-1ST DEGREE-POLICE OFFICER-STRONGARM	Felony D
508.010	0131215	*OBS* COMP ASSAULT-1ST DEGREE-POLICE OFFICER-STRONGARM	Felony B
508.010	0131500	ASSAULT, 1ST DEGREE	Felony B
508.010	0131501	ATT ASSAULT, 1ST DEGREE	Felony C
508.010	0131502	SOLC ASSAULT, 1ST DEGREE	Felony C
508.010	0131503	CONS ASSAULT, 1ST DEGREE	Felony C
508.010	0131504	FACL ASSAULT, 1ST DEGREE	Felony D
508.010	0131505	COMP ASSAULT, 1ST DEGREE	Felony B
508.010	0131510	ASSAULT, 1ST DEGREE - DOMESTIC VIOLENCE	Felony B

Statistical Analysis Considerations:

This charge list displays base level offenses as well as the inchoate variants

Data Source: CourtNet

Query Date: 3/26/2024

Assault 1st Degree

KRS	UOR Code	UOR Description	CHARGE LEVEL AND CLASS
508.010	0131511	ATT ASSAULT, 1ST DEGREE - DOMESTIC VIOLENCE	Felony C
508.010	0131512	SOLC ASSAULT, 1ST DEGREE - DOMESTIC VIOLENCE	Felony C
508.010	0131513	CONS ASSAULT, 1ST DEGREE - DOMESTIC VIOLENCE	Felony C
508.010	0131514	FACL ASSAULT, 1ST DEGREE - DOMESTIC VIOLENCE	Felony D
508.010	0131515	COMP ASSAULT, 1ST DEGREE - DOMESTIC VIOLENCE	Felony B
508.010	0131520	ASSAULT, 1ST DEGREE - POLICE OFFICER	Felony B
508.010	0131521	ATT ASSAULT, 1ST DEGREE - POLICE OFFICER	Felony C
508.010	0131522	SOLC ASSAULT, 1ST DEGREE - POLICE OFFICER	Felony C
508.010	0131523	CONS ASSAULT, 1ST DEGREE - POLICE OFFICER	Felony C
508.010	0131524	FACL ASSAULT, 1ST DEGREE - POLICE OFFICER	Felony D
508.010	0131525	COMP ASSAULT, 1ST DEGREE - POLICE OFFICER	Felony B
508.010	0132110	*OBS* ASSAULT-1ST DEGREE-OTHER	Felony B
508.010	0132111	*OBS* ATT ASSAULT-1ST DEGREE-OTHER	Felony C
508.010	0132112	*OBS* SOLC ASSAULT-1ST DEGREE-OTHER	Felony C
508.010	0132113	*OBS* CONS ASSAULT-1ST DEGREE-OTHER	Felony C
508.010	0132114	*OBS* FACL ASSAULT-1ST DEGREE-OTHER	Felony D
508.010	0132115	*OBS* COMP ASSAULT-1ST DEGREE-OTHER	Felony B

Assault 2nd Degree

KRS	UOR Code	UOR Description	CHARGE LEVEL AND CLASS
508.020	0130010	*OBS* ASSAULT - 2ND DEGREE	Felony C
508.020	0130011	*OBS* ATT ASSAULT - 2ND DEGREE	Misdemeanor A
508.020	0130012	*OBS* SOLC ASSAULT - 2ND DEGREE	Misdemeanor A
508.020	0130013	*OBS* CONS ASSAULT - 2ND DEGREE	Misdemeanor A
508.020	0130014	*OBS* FACL ASSAULT - 2ND DEGREE	Misdemeanor A
508.020	0130015	*OBS* COMP ASSAULT - 2ND DEGREE	Felony C
508.020	0130120	*OBS* ASSAULT-2ND DEGREE-FAMILY-GUN	Felony C
508.020	0130121	*OBS* ATT ASSAULT-2ND DEGREE-FAMILY-GUN	Misdemeanor A
508.020	0130122	*OBS* SOLC ASSAULT-2ND DEGREE-FAMILY-GUN	Misdemeanor A
508.020	0130123	*OBS* CONS ASSAULT-2ND DEGREE-FAMILY-GUN	Misdemeanor A
508.020	0130124	*OBS* FACL ASSAULT-2ND DEGREE-FAMILY-GUN	Misdemeanor A
508.020	0130125	*OBS* COMP ASSAULT-2ND DEGREE-FAMILY-GUN	Felony C
508.020	0130140	*OBS* ASSAULT 2ND SPOUSE ABUSE	Felony C
508.020	0130141	*OBS* ATT ASSAULT 2ND SPOUSE ABUSE	Misdemeanor A
508.020	0130142	*OBS* SOLC ASSAULT 2ND SPOUSE ABUSE	Misdemeanor A
508.020	0130143	*OBS* CONS ASSAULT 2ND SPOUSE ABUSE	Misdemeanor A
508.020	0130144	*OBS* FACL ASSAULT 2ND SPOUSE ABUSE	Misdemeanor A

Statistical Analysis Considerations:

This charge list displays base level offenses as well as the inchoate variants

Data Source: CourtNet

Query Date: 3/26/2024

Page 4 of 15

Assault 2nd Degree

KRS	UOR Code	UOR Description	CHARGE LEVEL AND CLASS
508.020	0130145	*OBS* COMP ASSAULT 2ND SPOUSE ABUSE	Felony C
508.020	0130160	*OBS* ASSAULT 2ND DEGREE DOMESTIC VIOLENCE	Felony C
508.020	0130161	*OBS* ATT ASSAULT 2ND DEGREE DOMESTIC VIOLENCE	Misdemeanor A
508.020	0130162	*OBS* SOLC ASSAULT 2ND DEGREE DOMESTIC VIOLENCE	Misdemeanor A
508.020	0130163	*OBS* CONS ASSAULT 2ND DEGREE DOMESTIC VIOLENCE	Misdemeanor A
508.020	0130164	*OBS* FACL ASSAULT 2ND DEGREE DOMESTIC VIOLENCE	Misdemeanor A
508.020	0130165	*OBS* COMP ASSAULT 2ND DEGREE DOMESTIC VIOLENCE	Felony C
508.020	0130220	*OBS* ASSAULT-2ND DEGREE-FAMILY-IDENTIFY WEAPON	Felony C
508.020	0130221	*OBS* ATT ASSAULT-2ND DEGREE-FAMILY-IDENTIFY WEAPON	Misdemeanor A
508.020	0130222	*OBS* SOLC ASSAULT-2ND DEGREE-FAMILY-IDENTIFY WEAPON	Misdemeanor A
508.020	0130223	*OBS* CONS ASSAULT-2ND DEGREE-FAMILY-IDENTIFY WEAPON	Misdemeanor A
508.020	0130224	*OBS* FACL ASSAULT-2ND DEGREE-FAMILY-IDENTIFY WEAPON	Misdemeanor A
508.020	0130225	*OBS* COMP ASSAULT-2ND DEGREE-FAMILY-IDENTIFY WEAPON	Felony C
508.020	0130240	*OBS* ASSAULT-2ND DEGREE-CHILD ABUSE	Felony C
508.020	0130241	*OBS* ATT ASSAULT-2ND DEGREE-CHILD ABUSE	Misdemeanor A
508.020	0130242	*OBS* SOLC ASSAULT-2ND DEGREE-CHILD ABUSE	Misdemeanor A
508.020	0130243	*OBS* CONS ASSAULT-2ND DEGREE-CHILD ABUSE	Misdemeanor A
508.020	0130244	*OBS* FACL ASSAULT-2ND DEGREE-CHILD ABUSE	Misdemeanor A
508.020	0130245	*OBS* COMP ASSAULT-2ND DEGREE-CHILD ABUSE	Felony C
508.020	0130320	*OBS* ASSAULT-2ND DEGREE-FAMILY-STRONGARM	Felony C
508.020	0130321	*OBS* ATT ASSAULT-2ND DEGREE-FAMILY-STRONGARM	Misdemeanor A
508.020	0130322	*OBS* SOLC ASSAULT-2ND DEGREE-FAMILY-STRONGARM	Misdemeanor A
508.020	0130323	*OBS* CONS ASSAULT-2ND DEGREE-FAMILY-STRONGARM	Misdemeanor A
508.020	0130324	*OBS* FACL ASSAULT-2ND DEGREE-FAMILY-STRONGARM	Misdemeanor A
508.020	0130325	*OBS* COMP ASSAULT-2ND DEGREE-FAMILY-STRONGARM	Felony C
508.020	0130420	*OBS* ASSAULT-2ND DEGREE NON-FAMILY-GUN	Felony C
508.020	0130421	*OBS* ATT ASSAULT-2ND DEGREE NON-FAMILY-GUN	Misdemeanor A
508.020	0130422	*OBS* SOLC ASSAULT-2ND DEGREE NON-FAMILY-GUN	Misdemeanor A
508.020	0130423	*OBS* CONS ASSAULT-2ND DEGREE NON-FAMILY-GUN	Misdemeanor A
508.020	0130424	*OBS* FACL ASSAULT-2ND DEGREE NON-FAMILY-GUN	Misdemeanor A
508.020	0130425	*OBS* COMP ASSAULT-2ND DEGREE NON-FAMILY-GUN	Felony C
508.020	0130520	*OBS* ASSAULT-2ND DEGREE-NON-FAMILY-IDENTIFY WEAPON	Felony C
508.020	0130521	*OBS* ATT ASSAULT-2ND DEGREE-NON-FAMILY-IDENTIFY WEAPON	Misdemeanor A
508.020	0130522	*OBS* SOLC ASSAULT-2ND DEGREE-NON-FAMILY-IDENTIFY WEAPON	Misdemeanor A
508.020	0130523	*OBS* CONS ASSAULT-2ND DEGREE-NON-FAMILY-IDENTIFY WEAPON	Misdemeanor A
508.020	0130524	*OBS* FACL ASSAULT-2ND DEGREE-NON-FAMILY-IDENTIFY WEAPON	Misdemeanor A

Statistical Analysis Considerations:

This charge list displays base level offenses as well as the inchoate variants

Data Source: CourtNet

Query Date: 3/26/2024

Assault 2nd Degree

KRS	UOR Code	UOR Description	CHARGE LEVEL AND CLASS
508.020	0130525	*OBS* COMP ASSAULT-2ND DEGREE-NON-FAMILY-IDENTIFY WEAPON	Felony C
508.020	0130620	*OBS* ASSAULT-2ND DEGREE-NON-FAMILY-STRONGARM	Felony C
508.020	0130621	*OBS* ATT ASSAULT-2ND DEGREE-NON-FAMILY-STRONGARM	Misdemeanor A
508.020	0130622	*OBS* SOLC ASSAULT-2ND DEGREE-NON-FAMILY-STRONGARM	Misdemeanor A
508.020	0130623	*OBS* CONS ASSAULT-2ND DEGREE-NON-FAMILY-STRONGARM	Misdemeanor A
508.020	0130624	*OBS* FACL ASSAULT-2ND DEGREE-NON-FAMILY-STRONGARM	Misdemeanor A
508.020	0130625	*OBS* COMP ASSAULT-2ND DEGREE-NON-FAMILY-STRONGARM	Felony C
508.020	0130720	*OBS* ASSAULT-2ND DEGREE-PUBLIC OFFICIAL-GUN	Felony C
508.020	0130721	*OBS* ATT ASSAULT-2ND DEGREE-PUBLIC OFFICIAL-GUN	Misdemeanor A
508.020	0130722	*OBS* SOLC ASSAULT-2ND DEGREE-PUBLIC OFFICIAL-GUN	Misdemeanor A
508.020	0130723	*OBS* CONS ASSAULT-2ND DEGREE-PUBLIC OFFICIAL-GUN	Misdemeanor A
508.020	0130724	*OBS* FACL ASSAULT-2ND DEGREE-PUBLIC OFFICIAL-GUN	Misdemeanor A
508.020	0130725	*OBS* COMP ASSAULT-2ND DEGREE-PUBLIC OFFICIAL-GUN	Felony C
508.020	0130820	*OBS* ASSAULT-2ND DEGREE-PUBLIC OFFICIAL-IDENTIFY WEAPON	Felony C
508.020	0130821	*OBS* ATT ASSAULT-2ND DEGREE-PUBLIC OFFICIAL-IDENTIFY WEAPON	Misdemeanor A
508.020	0130822	*OBS* SOLC ASSAULT-2ND DEGREE-PUBLIC OFFICIAL-IDENTIFY WEAPON	Misdemeanor A
508.020	0130823	*OBS* CONS ASSAULT-2ND DEGREE-PUBLIC OFFICIAL-IDENTIFY WEAPON	Misdemeanor A
508.020	0130824	*OBS* FACL ASSAULT-2ND DEGREE-PUBLIC OFFICIAL-IDENTIFY WEAPON	Misdemeanor A
508.020	0130825	*OBS* COMP ASSAULT-2ND DEGREE-PUBLIC OFFICIAL-IDENTIFY WEAPON	Felony C
508.020	0130920	*OBS* ASSAULT-2ND DEGREE-PUBLIC OFFICIAL-STRONGARM	Felony C
508.020	0130921	*OBS* ATT ASSAULT-2ND DEGREE-PUBLIC OFFICIAL-STRONGARM	Misdemeanor A
508.020	0130922	*OBS* SOLC ASSAULT-2ND DEGREE-PUBLIC OFFICIAL-STRONGARM	Misdemeanor A
508.020	0130923	*OBS* CONS ASSAULT-2ND DEGREE-PUBLIC OFFICIAL-STRONGARM	Misdemeanor A
508.020	0130924	*OBS* FACL ASSAULT-2ND DEGREE-PUBLIC OFFICIAL-STRONGARM	Misdemeanor A
508.020	0130925	*OBS* COMP ASSAULT-2ND DEGREE-PUBLIC OFFICIAL-STRONGARM	Felony C
508.020	0131020	*OBS* ASSAULT-2ND DEGREE-POLICE OFFICER-GUN	Felony C
508.020	0131021	*OBS* ATT ASSAULT-2ND DEGREE-POLICE OFFICER-GUN	Misdemeanor A
508.020	0131022	*OBS* SOLC ASSAULT-2ND DEGREE-POLICE OFFICER-GUN	Misdemeanor A
508.020	0131023	*OBS* CONS ASSAULT-2ND DEGREE-POLICE OFFICER-GUN	Misdemeanor A
508.020	0131024	*OBS* FACL ASSAULT-2ND DEGREE-POLICE OFFICER-GUN	Misdemeanor A
508.020	0131025	*OBS* COMP ASSAULT-2ND DEGREE-POLICE OFFICER-GUN	Felony C
508.020	0131120	*OBS* ASSAULT-2ND DEGREE-POLICE OFFICER-IDENTIFY WEAPON	Felony C
508.020	0131121	*OBS* ATT ASSAULT-2ND DEGREE-POLICE OFFICER-IDENTIFY WEAPON	Misdemeanor A
508.020	0131122	*OBS* SOLC ASSAULT-2ND DEGREE-POLICE OFFICER-IDENTIFY WEAPON	Misdemeanor A
508.020	0131123	*OBS* CONS ASSAULT-2ND DEGREE-POLICE OFFICER-IDENTIFY WEAPON	Misdemeanor A
508.020	0131124	*OBS* FACL ASSAULT-2ND DEGREE-POLICE OFFICER-IDENTIFY WEAPON	Misdemeanor A

Statistical Analysis Considerations:

This charge list displays base level offenses as well as the inchoate variants

Data Source: CourtNet

Query Date: 3/26/2024

Assault 2nd Degree

KRS	UOR Code	UOR Description	CHARGE LEVEL AND CLASS
508.020	0131125	*OBS* COMP ASSAULT-2ND DEGREE-POLICE OFFICER-IDENTIFY WEAPON	Felony C
508.020	0131220	*OBS* ASSAULT-2ND DEGREE-POLICE OFFICER-STRONGARM	Felony C
508.020	0131221	*OBS* ATT ASSAULT-2ND DEGREE-POLICE OFFICER-STRONGARM	Misdemeanor A
508.020	0131222	*OBS* SOLC ASSAULT-2ND DEGREE-POLICE OFFICER-STRONGARM	Misdemeanor A
508.020	0131223	*OBS* CONS ASSAULT-2ND DEGREE-POLICE OFFICER-STRONGARM	Misdemeanor A
508.020	0131224	*OBS* FACL ASSAULT-2ND DEGREE-POLICE OFFICER-STRONGARM	Misdemeanor A
508.020	0131225	*OBS* COMP ASSAULT-2ND DEGREE-POLICE OFFICER-STRONGARM	Felony C
508.020	0131600	ASSAULT, 2ND DEGREE	Felony C
508.020	0131601	ATT ASSAULT, 2ND DEGREE	Misdemeanor A
508.020	0131602	SOLC ASSAULT, 2ND DEGREE	Misdemeanor A
508.020	0131603	CONS ASSAULT, 2ND DEGREE	Misdemeanor A
508.020	0131604	FACL ASSAULT, 2ND DEGREE	Misdemeanor A
508.020	0131605	COMP ASSAULT, 2ND DEGREE	Felony C
508.020	0131610	ASSAULT, 2ND DEGREE - DOMESTIC VIOLENCE	Felony C
508.020	0131611	ATT ASSAULT, 2ND DEGREE - DOMESTIC VIOLENCE	Misdemeanor A
508.020	0131612	SOLC ASSAULT, 2ND DEGREE - DOMESTIC VIOLENCE	Misdemeanor A
508.020	0131613	CONS ASSAULT, 2ND DEGREE - DOMESTIC VIOLENCE	Misdemeanor A
508.020	0131614	FACL ASSAULT, 2ND DEGREE - DOMESTIC VIOLENCE	Misdemeanor A
508.020	0131615	COMP ASSAULT, 2ND DEGREE - DOMESTIC VIOLENCE	Felony C
508.020	0131620	ASSAULT, 2ND DEGREE - POLICE OFFICER	Felony C
508.020	0131621	ATT ASSAULT, 2ND DEGREE - POLICE OFFICER	Misdemeanor A
508.020	0131622	SOLC ASSAULT, 2ND DEGREE - POLICE OFFICER	Misdemeanor A
508.020	0131623	CONS ASSAULT, 2ND DEGREE - POLICE OFFICER	Misdemeanor A
508.020	0131624	FACL ASSAULT, 2ND DEGREE - POLICE OFFICER	Misdemeanor A
508.020	0131625	COMP ASSAULT, 2ND DEGREE - POLICE OFFICER	Felony C
508.020	0132120	*OBS* ASSAULT-2ND DEGREE-OTHER	Felony C
508.020	0132121	*OBS* ATT ASSAULT-2ND DEGREE-OTHER	Misdemeanor A
508.020	0132122	*OBS* SOLC ASSAULT-2ND DEGREE-OTHER	Misdemeanor A
508.020	0132123	*OBS* CONS ASSAULT-2ND DEGREE-OTHER	Misdemeanor A
508.020	0132124	*OBS* FACL ASSAULT-2ND DEGREE-OTHER	Misdemeanor A
508.020	0132125	*OBS* COMP ASSAULT-2ND DEGREE-OTHER	Felony C
518.090	0131180	ASSAULT SPORTS OFFICIAL, 2ND OR > OFF	Felony D
518.090	0131181	ATT ASSAULT SPORTS OFFICIAL, 2ND OR > OFF	Misdemeanor A
518.090	0131182	SOLC ASSAULT SPORTS OFFICIAL, 2ND OR > OFF	Misdemeanor A
518.090	0131183	CONS ASSAULT SPORTS OFFICIAL, 2ND OR > OFF	Misdemeanor A
518.090	0131184	FACL ASSAULT SPORTS OFFICIAL, 2ND OR > OFF	Misdemeanor A

Statistical Analysis Considerations:

This charge list displays base level offenses as well as the inchoate variants

Data Source: CourtNet

Query Date: 3/26/2024

Page 7 of 15

Assault 2nd Degree

KRS	UOR Code	UOR Description	CHARGE LEVEL AND CLASS
518.090	0131185	COMP ASSAULT SPORTS OFFICIAL, 2ND OR > OFF	Felony D

Burglary 1st Degree

KRS	UOR Code	UOR Description	CHARGE LEVEL AND CLASS
511.020	0220000	*OBS* ***AOC USE ONLY*** BURGLARY 1ST	Felony B
511.020	0220110	*OBS* BURGLARY-1ST DEGREE-SAFE/VAULT	Felony B
511.020	0220111	*OBS* ATT BURGLARY-1ST DEGREE-SAFE/VAULT	Felony C
511.020	0220112	*OBS* SOLC BURGLARY-1ST DEGREE-SAFE/VAULT	Felony C
511.020	0220113	*OBS* CONS BURGLARY-1ST DEGREE-SAFE/VAULT	Felony C
511.020	0220114	*OBS* FACL BURGLARY-1ST DEGREE-SAFE/VAULT	Felony D
511.020	0220115	*OBS* COMP BURGLARY-1ST DEGREE-SAFE/VAULT	Felony B
511.020	0220210	*OBS* BURGLARY-1ST DEGREE-FORCED ENTRY-RESIDENCE	Felony B
511.020	0220211	*OBS* ATT BURGLARY-1ST DEGREE-FORCED ENTRY-RESIDENCE	Felony C
511.020	0220212	*OBS* SOLC BURGLARY-1ST DEGREE-FORCED ENTRY-RESIDENCE	Felony C
511.020	0220213	*OBS* CONS BURGLARY-1ST DEGREE-FORCED ENTRY-RESIDENCE	Felony C
511.020	0220214	*OBS* FACL BURGLARY-1ST DEGREE-FORCED ENTRY-RESIDENCE	Felony D
511.020	0220215	*OBS* COMP BURGLARY-1ST DEGREE-FORCED ENTRY-RESIDENCE	Felony B
511.020	0220310	*OBS* BURGLARY-1ST DEGREE-FORCED ENTRY-NON-RESIDENCE	Felony B
511.020	0220311	*OBS* ATT BURGLARY-1ST DEGREE-FORCED ENTRY-NON-RESIDENCE	Felony C
511.020	0220312	*OBS* SOLC BURGLARY-1ST DEGREE-FORCED ENTRY-NON-RESIDENCE	Felony C
511.020	0220313	*OBS* CONS BURGLARY-1ST DEGREE-FORCED ENTRY-NON-RESIDENCE	Felony C
511.020	0220314	*OBS* FACL BURGLARY-1ST DEGREE-FORCED ENTRY-NON-RESIDENCE	Felony D
511.020	0220315	*OBS* COMP BURGLARY-1ST DEGREE-FORCED ENTRY-NON-RESIDENCE	Felony B
511.020	0220410	*OBS* BURGLARY-1ST DEGREE-NO FORCED ENTRY-RESIDENCE	Felony B
511.020	0220411	*OBS* ATT BURGLARY-1ST DEGREE-NO FORCED ENTRY-RESIDENCE	Felony C
511.020	0220412	*OBS* SOLC BURGLARY-1ST DEGREE-NO FORCED ENTRY-RESIDENCE	Felony C
511.020	0220413	*OBS* CONS BURGLARY-1ST DEGREE-NO FORCED ENTRY-RESIDENCE	Felony C
511.020	0220414	*OBS* FACL BURGLARY-1ST DEGREE-NO FORCED ENTRY-RESIDENCE	Felony D
511.020	0220415	*OBS* COMP BURGLARY-1ST DEGREE-NO FORCED ENTRY-RESIDENCE	Felony B
511.020	0220510	*OBS* BURGLARY-1ST DEGREE-NO FORCED ENTRY-NON-RESIDENCE	Felony B
511.020	0220511	*OBS* ATT BURGLARY-1ST DEGREE-NO FORCED ENTRY-NON-RESIDENCE	Felony C
511.020	0220512	*OBS* SOLC BURGLARY-1ST DEGREE-NO FORCED ENTRY-NON-RESIDENCE	Felony C
511.020	0220513	*OBS* CONS BURGLARY-1ST DEGREE-NO FORCED ENTRY-NON-RESIDENCE	Felony C
511.020	0220514	*OBS* FACL BURGLARY-1ST DEGREE-NO FORCED ENTRY-NON-RESIDENCE	Felony D
511.020	0220515	*OBS* COMP BURGLARY-1ST DEGREE-NO FORCED ENTRY-NON-RESIDENCE	Felony B
511.020	0220600	BURGLARY, 1ST DEGREE	Felony B
511.020	0220601	ATT BURGLARY, 1ST DEGREE	Felony C

Statistical Analysis Considerations:

This charge list displays base level offenses as well as the inchoate variants

Data Source: CourtNet

Query Date: 3/26/2024

Burglary 1st Degree

KRS	UOR Code	UOR Description	CHARGE LEVEL AND CLASS
511.020	0220602	SOLC BURGLARY, 1ST DEGREE	Felony C
511.020	0220603	CONS BURGLARY, 1ST DEGREE	Felony C
511.020	0220604	FACL BURGLARY, 1ST DEGREE	Felony D
511.020	0220605	COMP BURGLARY, 1ST DEGREE	Felony B
511.020	0220606	ENH BURGLARY, 1ST DEGREE	Felony A
511.020	0220710	*OBS* BURGLARY-1ST DEGREE-BANKING TYPE INSTITUTION	Felony B
511.020	0220711	*OBS* ATT BURGLARY-1ST DEGREE-BANKING TYPE INSTITUTION	Felony C
511.020	0220712	*OBS* SOLC BURGLARY-1ST DEGREE-BANKING TYPE INSTITUTION	Felony C
511.020	0220713	*OBS* CONS BURGLARY-1ST DEGREE-BANKING TYPE INSTITUTION	Felony C
511.020	0220714	*OBS* FACL BURGLARY-1ST DEGREE-BANKING TYPE INSTITUTION	Felony D
511.020	0220715	*OBS* COMP BURGLARY-1ST DEGREE-BANKING TYPE INSTITUTION	Felony B

KRS 507

KRS	UOR Code	UOR Description	CHARGE LEVEL AND CLASS
507.020	0090100	*OBS* MURDER-FAMILY-GUN	Felony A
507.020	0090101	*OBS* ATT MURDER-FAMILY-GUN	Felony B
507.020	0090102	*OBS* SOLC MURDER-FAMILY-GUN	Felony B
507.020	0090103	*OBS* CONS MURDER-FAMILY-GUN	Felony B
507.020	0090104	*OBS* FACL MURDER-FAMILY-GUN	Felony D
507.020	0090105	*OBS* COMP MURDER-FAMILY-GUN	Felony A
507.020	0090200	*OBS* MURDER-FAMILY-IDENTIFY WEAPON	Felony A
507.020	0090201	*OBS* ATT MURDER-FAMILY-IDENTIFY WEAPON	Felony B
507.020	0090202	*OBS* SOLC MURDER-FAMILY-IDENTIFY WEAPON	Felony B
507.020	0090203	*OBS* CONS MURDER-FAMILY-IDENTIFY WEAPON	Felony B
507.020	0090204	*OBS* FACL MURDER-FAMILY-IDENTIFY WEAPON	Felony D
507.020	0090205	*OBS* COMP MURDER-FAMILY-IDENTIFY WEAPON	Felony A
507.020	0090300	*OBS* MURDER-NON-FAMILY-GUN	Felony A
507.020	0090301	*OBS* ATT MURDER-NON-FAMILY-GUN	Felony B
507.020	0090302	*OBS* SOLC MURDER-NON-FAMILY-GUN	Felony B
507.020	0090303	*OBS* CONS MURDER-NON-FAMILY-GUN	Felony B
507.020	0090304	*OBS* FACL MURDER-NON-FAMILY-GUN	Felony D
507.020	0090305	*OBS* COMP MURDER-NON-FAMILY-GUN	Felony A
507.020	0090400	*OBS* MURDER-NON-FAMILY-IDENTIFY WEAPON	Felony A
507.020	0090401	*OBS* ATT MURDER-NON-FAMILY-IDENTIFY WEAPON	Felony B
507.020	0090402	*OBS* SOLC MURDER-NON-FAMILY-IDENTIFY WEAPON	Felony B
507.020	0090403	*OBS* CONS MURDER-NON-FAMILY-IDENTIFY WEAPON	Felony B
507.020	0090404	*OBS* FACL MURDER-NON-FAMILY-IDENTIFY WEAPON	Felony D

Statistical Analysis Considerations:

This charge list displays base level offenses as well as the inchoate variants

KRS 507

KRS	UOR Code	UOR Description	CHARGE LEVEL AND CLASS
507.020	0090405	*OBS* COMP MURDER-NON-FAMILY-IDENTIFY WEAPON	Felony A
507.020	0090500	*OBS* MURDER-PUBLIC OFFICIAL-GUN	Felony A
507.020	0090501	*OBS* ATT MURDER-PUBLIC OFFICIAL-GUN	Felony B
507.020	0090502	*OBS* SOLC MURDER-PUBLIC OFFICIAL-GUN	Felony B
507.020	0090503	*OBS* CONS MURDER-PUBLIC OFFICIAL-GUN	Felony B
507.020	0090504	*OBS* FACL MURDER-PUBLIC OFFICIAL-GUN	Felony D
507.020	0090505	*OBS* COMP MURDER-PUBLIC OFFICIAL-GUN	Felony A
507.020	0090600	*OBS* MURDER-PUBLIC OFFICIAL-IDENTIFY WEAPON	Felony A
507.020	0090601	*OBS* ATT MURDER-PUBLIC OFFICIAL-IDENTIFY WEAPON	Felony B
507.020	0090602	*OBS* SOLC MURDER-PUBLIC OFFICIAL-IDENTIFY WEAPON	Felony B
507.020	0090603	*OBS* CONS MURDER-PUBLIC OFFICIAL-IDENTIFY WEAPON	Felony B
507.020	0090604	*OBS* FACL MURDER-PUBLIC OFFICIAL-IDENTIFY WEAPON	Felony D
507.020	0090605	*OBS* COMP MURDER-PUBLIC OFFICIAL-IDENTIFY WEAPON	Felony A
507.020	0090700	*OBS* MURDER-POLICE OFFICER-GUN	Felony A
507.020	0090701	*OBS* ATT MURDER-POLICE OFFICER-GUN	Felony B
507.020	0090702	*OBS* SOLC MURDER-POLICE OFFICER-GUN	Felony B
507.020	0090703	*OBS* CONS MURDER-POLICE OFFICER-GUN	Felony B
507.020	0090704	*OBS* FACL MURDER-POLICE OFFICER-GUN	Felony D
507.020	0090705	*OBS* COMP MURDER-POLICE OFFICER-GUN	Felony A
507.020	0090800	*OBS* MURDER-POLICE OFFICER-IDENTIFY WEAPON	Felony A
507.020	0090801	*OBS* ATT MURDER-POLICE OFFICER-IDENTIFY WEAPON	Felony B
507.020	0090802	*OBS* SOLC MURDER-POLICE OFFICER-IDENTIFY WEAPON	Felony B
507.020	0090803	*OBS* CONS MURDER-POLICE OFFICER-IDENTIFY WEAPON	Felony B
507.020	0090804	*OBS* FACL MURDER-POLICE OFFICER-IDENTIFY WEAPON	Felony D
507.020	0090805	*OBS* COMP MURDER-POLICE OFFICER-IDENTIFY WEAPON	Felony A
507.020	0091000	*OBS* MURDER - CAPITAL	Felony A
507.020	0091001	*OBS* ATT MURDER - CAPITAL	Felony B
507.020	0091002	*OBS* SOLC MURDER - CAPITAL	Felony B
507.020	0091003	*OBS* CONS MURDER - CAPITAL	Felony B
507.020	0091004	*OBS* FACL MURDER - CAPITAL	Felony D
507.020	0091005	*OBS* COMP MURDER - CAPITAL	Felony A
507.020	0091500	MURDER	Felony A
507.020	0091501	ATT MURDER	Felony B
507.020	0091502	SOLC MURDER	Felony B
507.020	0091503	CONS MURDER	Felony B
507.020	0091504	FACL MURDER	Felony D

Statistical Analysis Considerations:

This charge list displays base level offenses as well as the inchoate variants

Data Source: CourtNet

Query Date: 3/26/2024

KRS 507

KRS	UOR Code	UOR Description	CHARGE LEVEL AND CLASS
507.020	0091505	COMP MURDER	Felony A
507.020	0091510	MURDER - DOMESTIC VIOLENCE	Felony A
507.020	0091511	ATT MURDER - DOMESTIC VIOLENCE	Felony B
507.020	0091512	SOLC MURDER - DOMESTIC VIOLENCE	Felony B
507.020	0091513	CONS MURDER - DOMESTIC VIOLENCE	Felony B
507.020	0091514	FACL MURDER - DOMESTIC VIOLENCE	Felony D
507.020	0091515	COMP MURDER - DOMESTIC VIOLENCE	Felony A
507.020	0091520	MURDER - POLICE OFFICER	Felony A
507.020	0091521	ATT MURDER - POLICE OFFICER	Felony B
507.020	0091522	SOLC MURDER - POLICE OFFICER	Felony B
507.020	0091523	CONS MURDER - POLICE OFFICER	Felony B
507.020	0091524	FACL MURDER - POLICE OFFICER	Felony D
507.020	0091525	COMP MURDER - POLICE OFFICER	Felony A
507.020	0091540	MURDER-AGG OTHER THAN PEACE OFFICER/DOMESTIC/DEATH OF CHILD	Felony A
507.020	0091541	ATT MURDER-AGG OTHER THAN PEACE OFFICER/DOMESTIC/DEATH OF CHILD	Felony B
507.020	0091542	SOLC MURDER-AGG OTHER THAN PEACE OFFICER/DOMESTIC/DEATH OF CHILD	Felony B
507.020	0091543	CONS MURDER-AGG OTHER THAN PEACE OFFICER/DOMESTIC/DEATH OF CHILD	Felony B
507.020	0091544	FACL MURDER-AGG OTHER THAN PEACE OFFICER/DOMESTIC/DEATH OF CHILD	Felony D
507.020	0091545	COMP MURDER-AGG OTHER THAN PEACE OFFICER/DOMESTIC/DEATH OF CHILD	Felony A
507.020	0091560	MURDER - AGG CIRCUMSTANCE - INTENTIONAL DEATH OF A CHILD	Felony A
507.020	0091561	ATT MURDER - AGG CIRCUMSTANCE - INTENTIONAL DEATH OF A CHILD	Felony B
507.020	0091562	SOLC MURDER - AGG CIRCUMSTANCE - INTENTIONAL DEATH OF A CHILD	Felony B
507.020	0091563	CONS MURDER - AGG CIRCUMSTANCE - INTENTIONAL DEATH OF A CHILD	Felony B
507.020	0091564	FACL MURDER - AGG CIRCUMSTANCE - INTENTIONAL DEATH OF A CHILD	Felony D
507.020	0091565	COMP MURDER - AGG CIRCUMSTANCE - INTENTIONAL DEATH OF A CHILD	Felony A
507.020	0099900	*OBS* MURDER-NONE OF THE ABOVE-HOMICIDE	Felony A
507.020	0099901	*OBS* ATT MURDER-NONE OF THE ABOVE-HOMICIDE	Felony B
507.020	0099902	*OBS* SOLC MURDER-NONE OF THE ABOVE-HOMICIDE	Felony B
507.020	0099903	*OBS* CONS MURDER-NONE OF THE ABOVE-HOMICIDE	Felony B
507.020	0099904	*OBS* FACL MURDER-NONE OF THE ABOVE-HOMICIDE	Felony D
507.020	0099905	*OBS* COMP MURDER-NONE OF THE ABOVE-HOMICIDE	Felony A
507.030	0092010	MANSLAUGHTER-1ST DEGREE	Felony B
507.030	0092011	ATT MANSLAUGHTER-1ST DEGREE	Felony C
507.030	0092012	SOLC MANSLAUGHTER-1ST DEGREE	Felony C
507.030	0092013	CONS MANSLAUGHTER-1ST DEGREE	Felony C

Statistical Analysis Considerations:

This charge list displays base level offenses as well as the inchoate variants

Data Source: CourtNet

Query Date: 3/26/2024

KRS 507

KRS	UOR Code	UOR Description	CHARGE LEVEL AND CLASS
507.030	0092014	FACL MANSLAUGHTER-1ST DEGREE	Felony D
507.030	0092015	COMP MANSLAUGHTER-1ST DEGREE	Felony B
507.040	0092020	MANSLAUGHTER-2ND DEGREE	Felony C
507.040	0092021	ATT MANSLAUGHTER-2ND DEGREE	Misdemeanor A
507.040	0092022	SOLC MANSLAUGHTER-2ND DEGREE	Misdemeanor A
507.040	0092023	CONS MANSLAUGHTER-2ND DEGREE	Misdemeanor A
507.040	0092024	FACL MANSLAUGHTER-2ND DEGREE	Misdemeanor A
507.040	0092025	COMP MANSLAUGHTER-2ND DEGREE	Felony C
507.050	0092100	RECKLESS HOMICIDE	Felony D
507.050	0092101	ATT RECKLESS HOMICIDE	Misdemeanor A
507.050	0092102	SOLC RECKLESS HOMICIDE	Misdemeanor A
507.050	0092103	CONS RECKLESS HOMICIDE	Misdemeanor A
507.050	0092104	FACL RECKLESS HOMICIDE	Misdemeanor A
507.050	0092105	COMP RECKLESS HOMICIDE	Felony D
507A.020	0093000	FETAL HOMICIDE, 1ST DEGREE	Felony A
507A.020	0093001	ATT FETAL HOMICIDE, 1ST DEGREE	Felony B
507A.020	0093002	SOLC FETAL HOMICIDE, 1ST DEGREE	Felony B
507A.020	0093003	CONS FETAL HOMICIDE, 1ST DEGREE	Felony B
507A.020	0093004	FACL FETAL HOMICIDE, 1ST DEGREE	Felony D
507A.020	0093005	COMP FETAL HOMICIDE, 1ST DEGREE	Felony A
507A.030	0093010	FETAL HOMICIDE, 2ND DEGREE	Felony B
507A.030	0093011	ATT FETAL HOMICIDE, 2ND DEGREE	Felony C
507A.030	0093012	SOLC FETAL HOMICIDE, 2ND DEGREE	Felony C
507A.030	0093013	CONS FETAL HOMICIDE, 2ND DEGREE	Felony C
507A.030	0093014	FACL FETAL HOMICIDE, 2ND DEGREE	Felony D
507A.030	0093015	COMP FETAL HOMICIDE, 2ND DEGREE	Felony B
507A.040	0093020	FETAL HOMICIDE, 3RD DEGREE	Felony C
507A.040	0093021	ATT FETAL HOMICIDE, 3RD DEGREE	Misdemeanor A
507A.040	0093022	SOLC FETAL HOMICIDE, 3RD DEGREE	Misdemeanor A
507A.040	0093023	CONS FETAL HOMICIDE, 3RD DEGREE	Misdemeanor A
507A.040	0093024	FACL FETAL HOMICIDE, 3RD DEGREE	Misdemeanor A
507A.040	0093025	COMP FETAL HOMICIDE, 3RD DEGREE	Felony C
507A.050	0093030	FETAL HOMICIDE, 4TH DEGREE	Felony D
507A.050	0093031	ATT FETAL HOMICIDE, 4TH DEGREE	Misdemeanor A
507A.050	0093032	SOLC FETAL HOMICIDE, 4TH DEGREE	Misdemeanor A
507A.050	0093033	CONS FETAL HOMICIDE, 4TH DEGREE	Misdemeanor A

Statistical Analysis Considerations:

This charge list displays base level offenses as well as the inchoate variants

Data Source: CourtNet

Query Date: 3/26/2024

KRS 507

KRS	UOR Code	UOR Description	CHARGE LEVEL AND CLASS
507A.050	0093034	FACL FETAL HOMICIDE, 4TH DEGREE	Misdemeanor A
507A.050	0093035	COMP FETAL HOMICIDE, 4TH DEGREE	Felony D
KRS507020	9091000	*OBS* MURDER	Local Ordinance
KRS507030	9091010	*OBS* MANSLAUGHTER 1ST DEGREE	Local Ordinance
KRS507040	9091020	*OBS* MANSLAUGHTER 2ND DEGREE	Local Ordinance
KRS507050	9091030	*OBS* RECKLESS HOMICIDE	Local Ordinance
KRS525070	9024050	*OBS* HARASSMENT	Local Ordinance

Robbery 1st Degree

KRS	UOR Code	UOR Description	CHARGE LEVEL AND CLASS
515.020	0120000	*OBS* ROBBERY - 1ST DEGREE	Felony B
515.020	0120001	*OBS* ATT ROBBERY - 1ST DEGREE	Felony C
515.020	0120002	*OBS* SOLC ROBBERY - 1ST DEGREE	Felony C
515.020	0120003	*OBS* CONS ROBBERY - 1ST DEGREE	Felony C
515.020	0120004	*OBS* FACL ROBBERY - 1ST DEGREE	Felony D
515.020	0120005	*OBS* COMP ROBBERY - 1ST DEGREE	Felony B
515.020	0120020	ROBBERY, 1ST DEGREE	Felony B
515.020	0120021	ATT ROBBERY, 1ST DEGREE	Felony C
515.020	0120022	SOLC ROBBERY, 1ST DEGREE	Felony C
515.020	0120023	CONS ROBBERY, 1ST DEGREE	Felony C
515.020	0120024	FACL ROBBERY, 1ST DEGREE	Felony D
515.020	0120025	COMP ROBBERY, 1ST DEGREE	Felony B
515.020	0120026	ENH ROBBERY, 1ST DEGREE	Felony A
515.020	0120110	*OBS* ROBBERY-1ST DEGREE-BUSINESS-GUN	Felony B
515.020	0120111	*OBS* ATT ROBBERY-1ST DEGREE-BUSINESS-GUN	Felony C
515.020	0120112	*OBS* SOLC ROBBERY-1ST DEGREE-BUSINESS-GUN	Felony C
515.020	0120113	*OBS* CONS ROBBERY-1ST DEGREE-BUSINESS-GUN	Felony C
515.020	0120114	*OBS* FACL ROBBERY-1ST DEGREE-BUSINESS-GUN	Felony D
515.020	0120115	*OBS* COMP ROBBERY-1ST DEGREE-BUSINESS-GUN	Felony B
515.020	0120210	*OBS* ROBBERY-1ST DEGREE-BUSINESS-IDENTIFY WEAPON	Felony B
515.020	0120211	*OBS* ATT ROBBERY-1ST DEGREE-BUSINESS-IDENTIFY WEAPON	Felony C
515.020	0120212	*OBS* SOLC ROBBERY-1ST DEGREE-BUSINESS-IDENTIFY WEAPON	Felony C
515.020	0120213	*OBS* CONS ROBBERY-1ST DEGREE-BUSINESS-IDENTIFY WEAPON	Felony C
515.020	0120214	*OBS* FACL ROBBERY-1ST DEGREE-BUSINESS-IDENTIFY WEAPON	Felony D
515.020	0120215	*OBS* COMP ROBBERY-1ST DEGREE-BUSINESS-IDENTIFY WEAPON	Felony B
515.020	0120310	*OBS* ROBBERY-1ST DEGREE-BUSINESS-STRONGARM	Felony B
515.020	0120311	*OBS* ATT ROBBERY-1ST DEGREE-BUSINESS-STRONGARM	Felony C

Statistical Analysis Considerations:

This charge list displays base level offenses as well as the inchoate variants

Data Source: CourtNet

Query Date: 3/26/2024

Robbery 1st Degree

KRS	UOR Code	UOR Description	CHARGE LEVEL AND CLASS
515.020	0120312	*OBS* SOLC ROBBERY-1ST DEGREE-BUSINESS-STRONGARM	Felony C
515.020	0120313	*OBS* CONS ROBBERY-1ST DEGREE-BUSINESS-STRONGARM	Felony C
515.020	0120314	*OBS* FACL ROBBERY-1ST DEGREE-BUSINESS-STRONGARM	Felony D
515.020	0120315	*OBS* COMP ROBBERY-1ST DEGREE-BUSINESS-STRONGARM	Felony B
515.020	0120410	*OBS* ROBBERY-1ST DEGREE-STREET-GUN	Felony B
515.020	0120411	*OBS* ATT ROBBERY-1ST DEGREE-STREET-GUN	Felony C
515.020	0120412	*OBS* SOLC ROBBERY-1ST DEGREE-STREET-GUN	Felony C
515.020	0120413	*OBS* CONS ROBBERY-1ST DEGREE-STREET-GUN	Felony C
515.020	0120414	*OBS* FACL ROBBERY-1ST DEGREE-STREET-GUN	Felony D
515.020	0120415	*OBS* COMP ROBBERY-1ST DEGREE-STREET-GUN	Felony B
515.020	0120510	*OBS* ROBBERY-1ST DEGREE-STREET-IDENTIFY WEAPON	Felony B
515.020	0120511	*OBS* ATT ROBBERY-1ST DEGREE-STREET-IDENTIFY WEAPON	Felony C
515.020	0120512	*OBS* SOLC ROBBERY-1ST DEGREE-STREET-IDENTIFY WEAPON	Felony C
515.020	0120513	*OBS* CONS ROBBERY-1ST DEGREE-STREET-IDENTIFY WEAPON	Felony C
515.020	0120514	*OBS* FACL ROBBERY-1ST DEGREE-STREET-IDENTIFY WEAPON	Felony D
515.020	0120515	*OBS* COMP ROBBERY-1ST DEGREE-STREET-IDENTIFY WEAPON	Felony B
515.020	0120610	*OBS* ROBBERY-1ST DEGREE-STREET-STRONGARM	Felony B
515.020	0120611	*OBS* ATT ROBBERY-1ST DEGREE-STREET-STRONGARM	Felony C
515.020	0120612	*OBS* SOLC ROBBERY-1ST DEGREE-STREET-STRONGARM	Felony C
515.020	0120613	*OBS* CONS ROBBERY-1ST DEGREE-STREET-STRONGARM	Felony C
515.020	0120614	*OBS* FACL ROBBERY-1ST DEGREE-STREET-STRONGARM	Felony D
515.020	0120615	*OBS* COMP ROBBERY-1ST DEGREE-STREET-STRONGARM	Felony B
515.020	0120710	*OBS* ROBBERY-1ST DEGREE-RESIDENCE-GUN	Felony B
515.020	0120711	*OBS* ATT ROBBERY-1ST DEGREE-RESIDENCE-GUN	Felony C
515.020	0120712	*OBS* SOLC ROBBERY-1ST DEGREE-RESIDENCE-GUN	Felony C
515.020	0120713	*OBS* CONS ROBBERY-1ST DEGREE-RESIDENCE-GUN	Felony C
515.020	0120714	*OBS* FACL ROBBERY-1ST DEGREE-RESIDENCE-GUN	Felony D
515.020	0120715	*OBS* COMP ROBBERY-1ST DEGREE-RESIDENCE-GUN	Felony B
515.020	0120810	*OBS* ROBBERY-1ST DEGREE-RESIDENCE-IDENTIFY WEAPON	Felony B
515.020	0120811	*OBS* ATT ROBBERY-1ST DEGREE-RESIDENCE-IDENTIFY WEAPON	Felony C
515.020	0120812	*OBS* SOLC ROBBERY-1ST DEGREE-RESIDENCE-IDENTIFY WEAPON	Felony C
515.020	0120813	*OBS* CONS ROBBERY-1ST DEGREE-RESIDENCE-IDENTIFY WEAPON	Felony C
515.020	0120814	*OBS* FACL ROBBERY-1ST DEGREE-RESIDENCE-IDENTIFY WEAPON	Felony D
515.020	0120815	*OBS* COMP ROBBERY-1ST DEGREE-RESIDENCE-IDENTIFY WEAPON	Felony B
515.020	0120910	*OBS* ROBBERY-1ST DEGREE-RESIDENCE-STRONGARM	Felony B
515.020	0120911	*OBS* ATT ROBBERY-1ST DEGREE-RESIDENCE-STRONGARM	Felony C

Statistical Analysis Considerations:

This charge list displays base level offenses as well as the inchoate variants

Data Source: CourtNet

Query Date: 3/26/2024

Page 14 of 15

Robbery 1st Degree

KRS	UOR Code	UOR Description	CHARGE LEVEL AND CLASS
515.020	0120912	*OBS* SOLC ROBBERY-1ST DEGREE-RESIDENCE-STRONGARM	Felony C
515.020	0120913	*OBS* CONS ROBBERY-1ST DEGREE-RESIDENCE-STRONGARM	Felony C
515.020	0120914	*OBS* FACL ROBBERY-1ST DEGREE-RESIDENCE-STRONGARM	Felony D
515.020	0120915	*OBS* COMP ROBBERY-1ST DEGREE-RESIDENCE-STRONGARM	Felony B
515.020	0121110	*OBS* ROBBERY-1ST DEGREE-BANKING TYPE INSTITUTION	Felony B
515.020	0121111	*OBS* ATT ROBBERY-1ST DEGREE-BANKING TYPE INSTITUTION	Felony C
515.020	0121112	*OBS* SOLC ROBBERY-1ST DEGREE-BANKING TYPE INSTITUTION	Felony C
515.020	0121113	*OBS* CONS ROBBERY-1ST DEGREE-BANKING TYPE INSTITUTION	Felony C
515.020	0121114	*OBS* FACL ROBBERY-1ST DEGREE-BANKING TYPE INSTITUTION	Felony D
515.020	0121115	*OBS* COMP ROBBERY-1ST DEGREE-BANKING TYPE INSTITUTION	Felony B
515.020	0122010	*OBS* ROBBERY-1ST DEGREE-OTHER	Felony B
515.020	0122011	*OBS* ATT ROBBERY-1ST DEGREE-OTHER	Felony C
515.020	0122012	*OBS* SOLC ROBBERY-1ST DEGREE-OTHER	Felony C
515.020	0122013	*OBS* CONS ROBBERY-1ST DEGREE-OTHER	Felony C
515.020	0122014	*OBS* FACL ROBBERY-1ST DEGREE-OTHER	Felony D
515.020	0122015	*OBS* COMP ROBBERY-1ST DEGREE-OTHER	Felony B
KRS515020	9091130	*OBS* ROBBERY 1ST DEGREE	Local Ordinance

Statistical Analysis Considerations:

This charge list displays base level offenses as well as the inchoate variants

Data Source: CourtNet

Query Date: 3/26/2024

Page 15 of 15