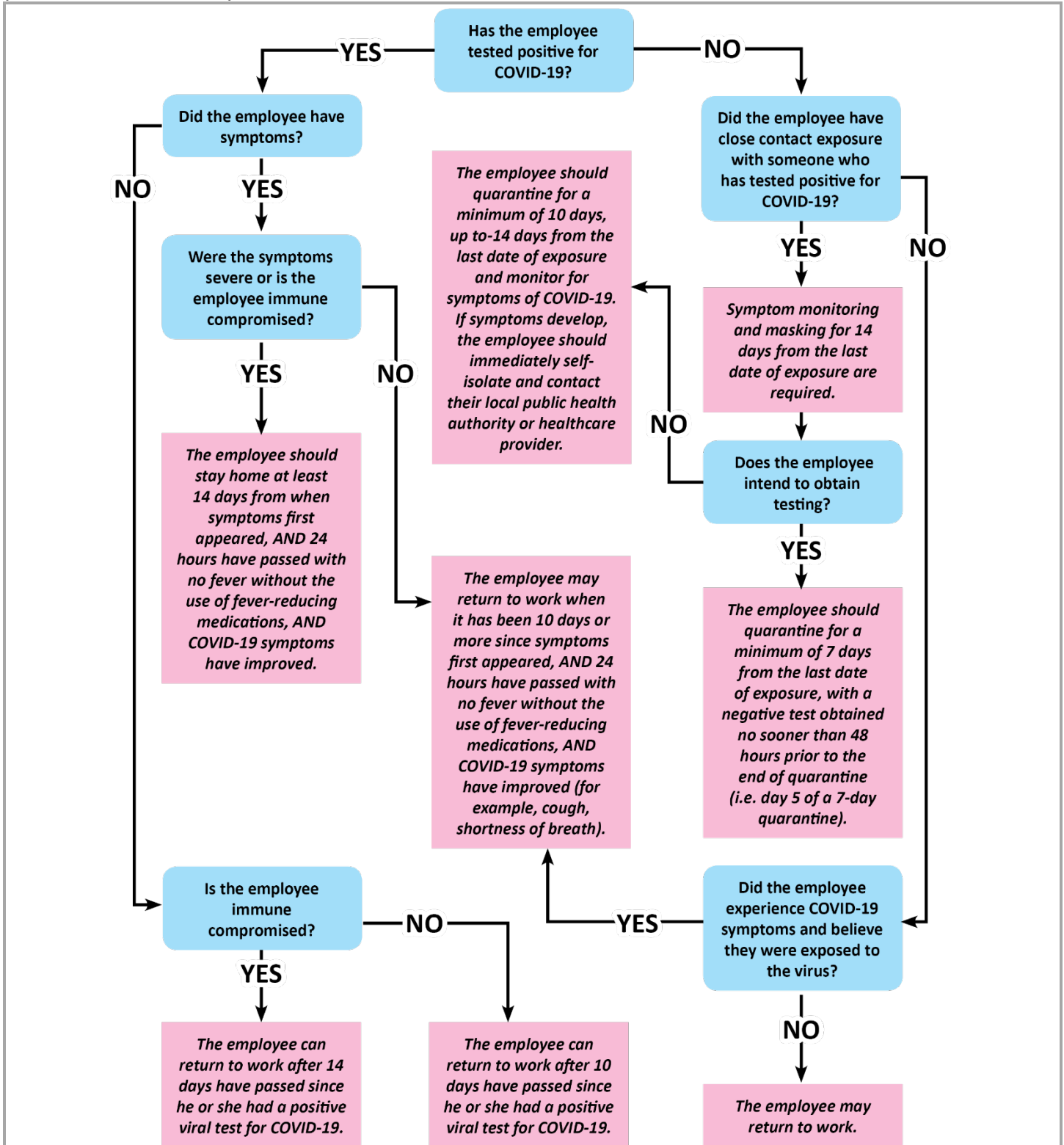


COVID-19 Return to Work Flowchart

Administrative Office of the Courts
1001 Vandelay Drive
Frankfort, KY 40601
(502) 573-2350



IMPORTANT: The following flowchart reflects the CDC's general guidance and should be used as a tool for assessing when an employee can safely return to work. However, this is only guidance and does not replace any instruction or recommendation by an employee's healthcare provider or the local health department.



For additional questions, please email COVID19@kycourts.net.